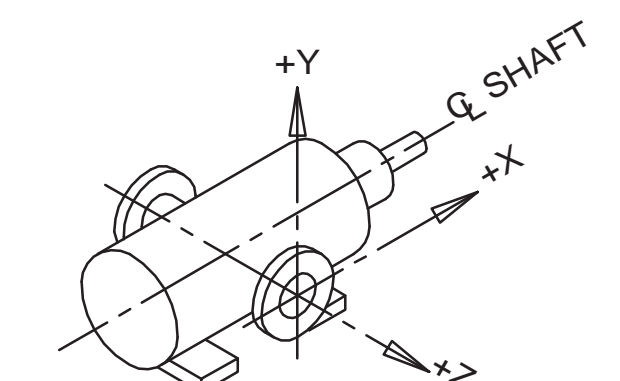
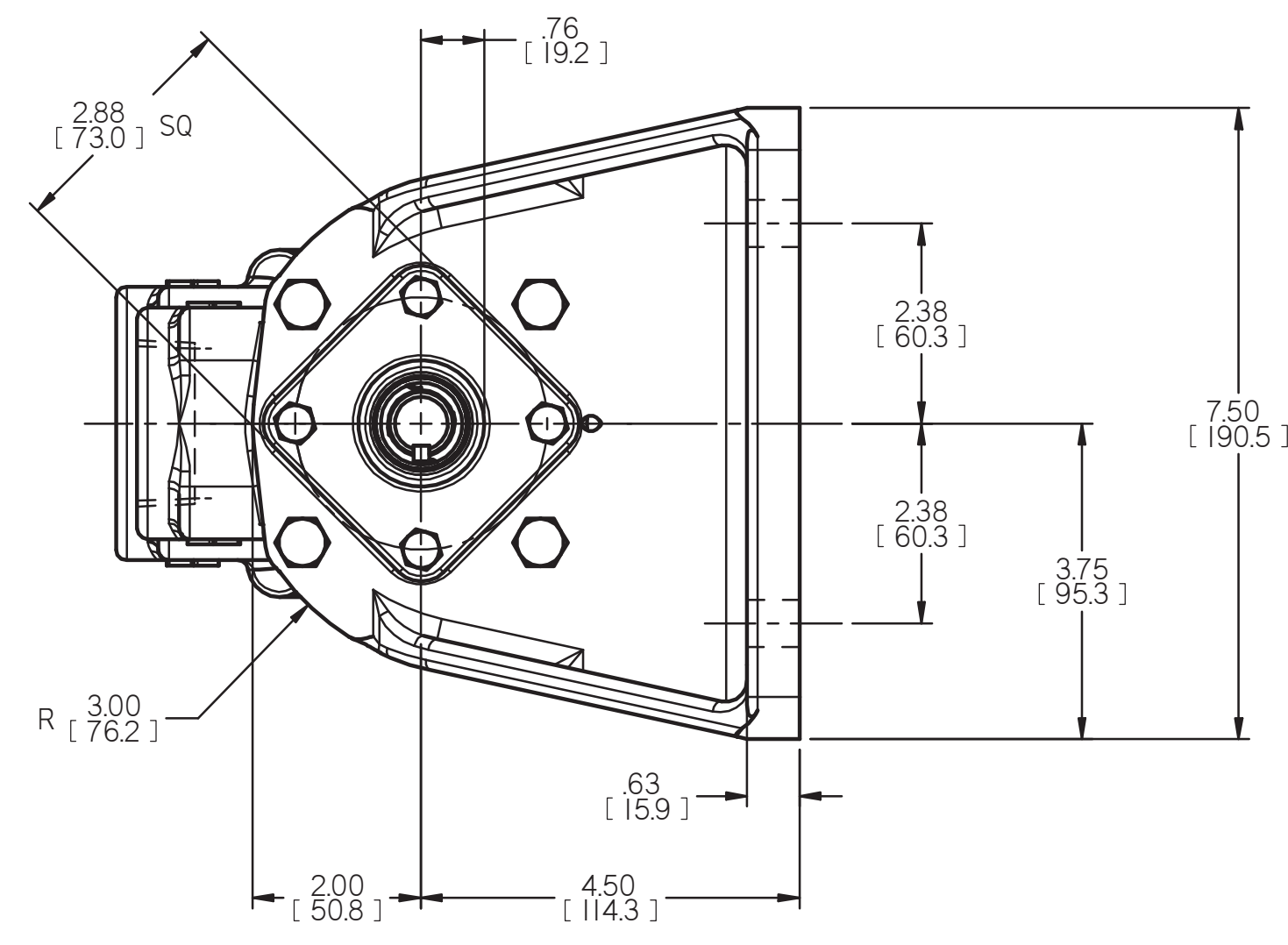
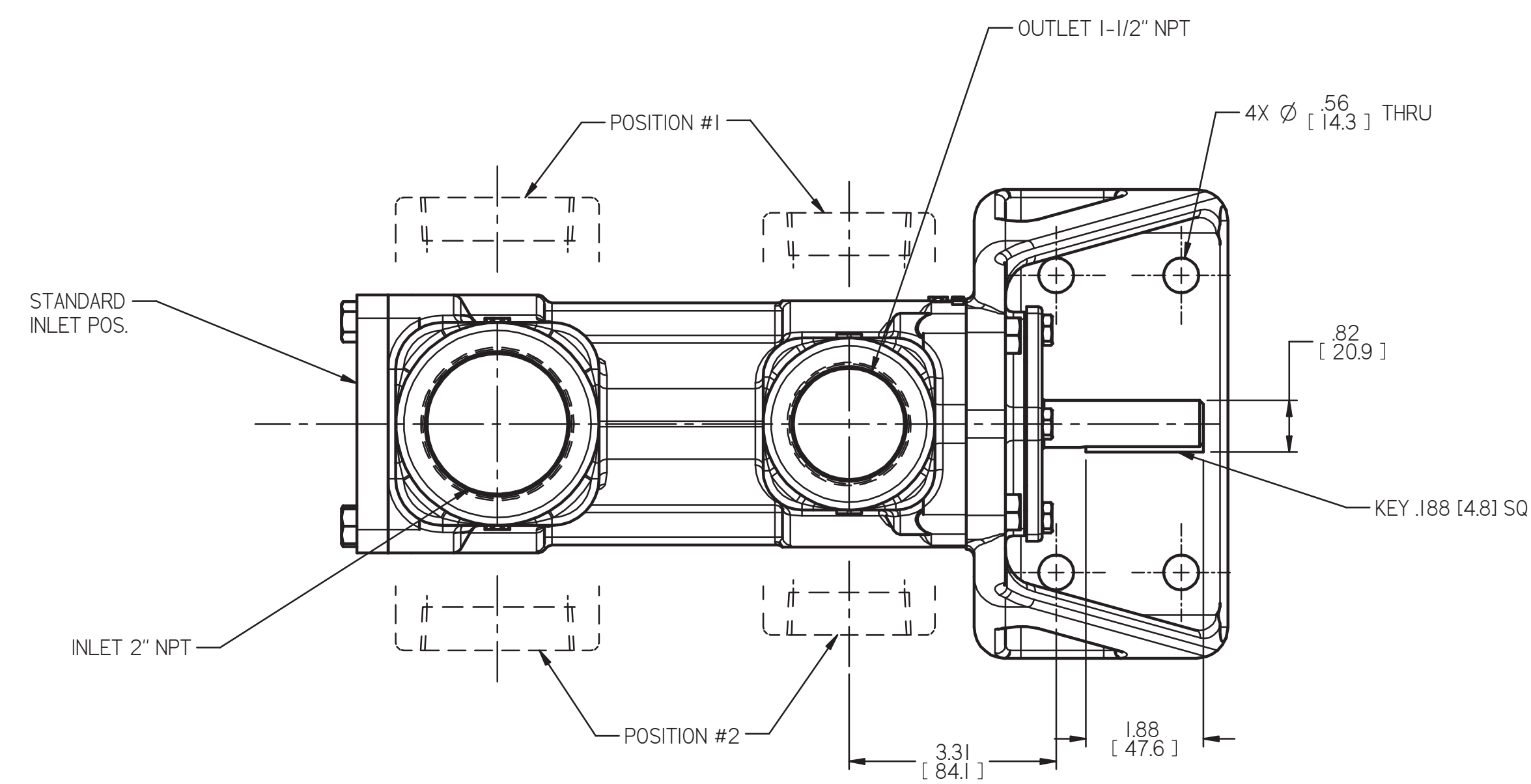


REVISION HISTORY						
CHG NO	ZONE	REV	DESCRIPTION	DATE	BY	APPROVED
13-0426	ALL	3	REDRAWN AND UPDATED ON CAD	6-16-14	ERH	CHH

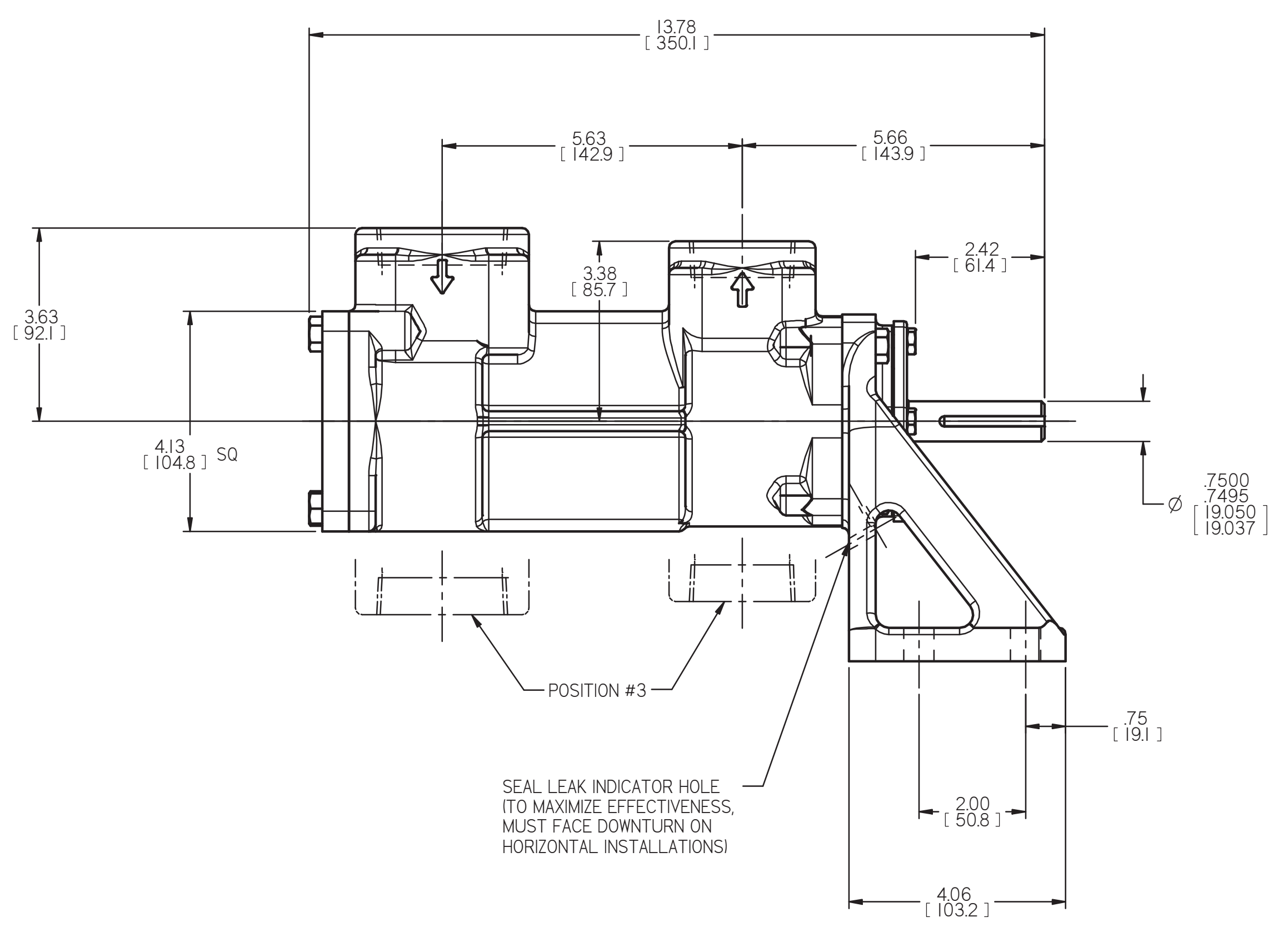


COORDINATE SYSTEM FOR MAXIMUM PUMP FORCES (F) AND MOMENTS (M)

INLET:
 FX= 37.5 LBF [169 N] MX= 62.5 LB FT [84.7 N.m]
 FY= 37.5 LBF [169 N] MY= 62.5 LB FT [84.7 N.m]
 FZ= 37.5 LBF [169 N] MZ= 62.5 LB FT [84.7 N.m]

OUTLET:
 FX= 28.1 LBF [125 N] MX= 46.9 LB FT [63.6 N.m]
 FY= 28.1 LBF [125 N] MY= 46.9 LB FT [63.6 N.m]
 FZ= 28.1 LBF [125 N] MZ= 46.9 LB FT [63.6 N.m]

FORCE AND MOMENT VALUES ARE RELATIVE TO CENTER OF INLET AND OUTLET PORT FACES.



SEAL LEAK INDICATOR HOLE (TO MAXIMIZE EFFECTIVENESS, MUST FACE DOWNTURN ON HORIZONTAL INSTALLATIONS)

DRAWING CERTIFICATION	
CUSTOMER NAME -----	
CUSTOMER PO NUMBER ---	
CUSTOMER PART NUMBER -	
BOM NUMBER -----	
PUMP TYPE -----	
SHAFT ROTATION -----	
PORT POSITION -----	
OTHER INFORMATION	
CERTIFIED BY -----	
CERTIFIED DATE -----	
IMO ORDER NUMBER -----	
DATA REVISION NUMBER -	

- NOTES:
- UNLESS OTHERWISE SPECIFIED, ALL DIMENSIONS ARE IN INCHES. DIMENSIONS IN [] ARE MILLIMETERS.
 - PORT POSITIONS ARE RELATIVE TO THE WEEP HOLE FACING DOWNWARD.

DRAWN		WLW	9-2-94	CIRCOR IMO®	OUTLINE STANDARD _3E_F-143_/162_
CHECKED		MJC	9-8-94		
APPD		MJC	9-8-94		
PROCESS		METHODS		TITLE	
UNLESS OTHERWISE SPECIFIED ASME Y14.5M-1994.				SIZE	CAGE CODE
COMMENTS: SUCTION STRAINER AND DISCHARGE RELIEF VALVE MUST BE PROVIDED. ALIGNMENT: UNITS ARE ACCURATELY ALIGNED AT THE FACTORY. ALIGNMENT SHOULD BE CHECKED BEFORE STARTING TO ENSURE THAT IT IS STILL WITHIN .005 (0.13) MM. PRE-STARTING: FLUSH SUCTION PIPING BEFORE CONNECTING PUMP. PRIME AND VENT PUMP. READ INSTRUCTION MANUAL FOR DETAILS BEFORE STARTING.				FIRST ORDER	DWG NO
				092212	SDD18020
USED ON				3242/260	SCALE
				1/2	WEIGHT
				36 LBS [16kg]	SHEET
				1	OF