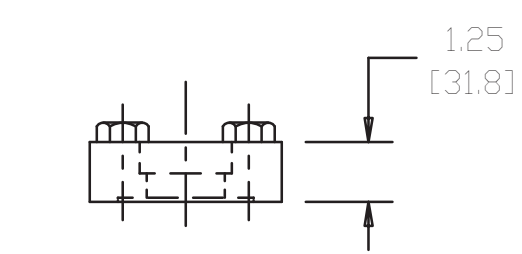
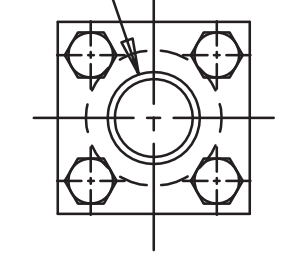


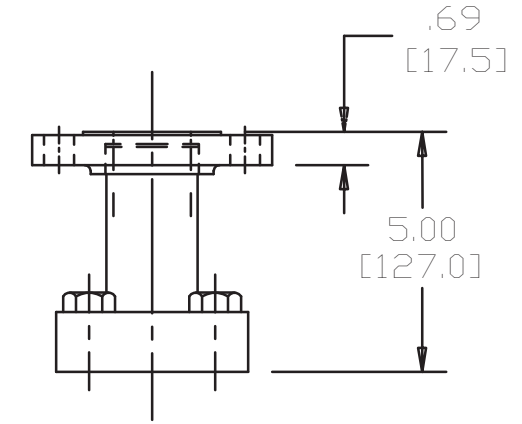
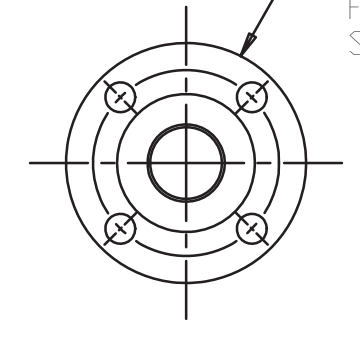
REVISION HISTORY					
CHG NO	ZONE	REV	DESCRIPTION	DATE	BY / APPROVED
16-0302	D5, D6	03	150# RF OUTLET OPTION HEIGHT 5.00 WAS 5.50. 300# RF OUTLET OPTION HEIGHT 5.50 WAS 5.00.	06-22-16	DMM / DMM

OUTLET 1-1/2" SIZE SOCKET WELDING ADAPTER
Ø1.920 (48.77) SOCKET
.66 (16.8) DEEP



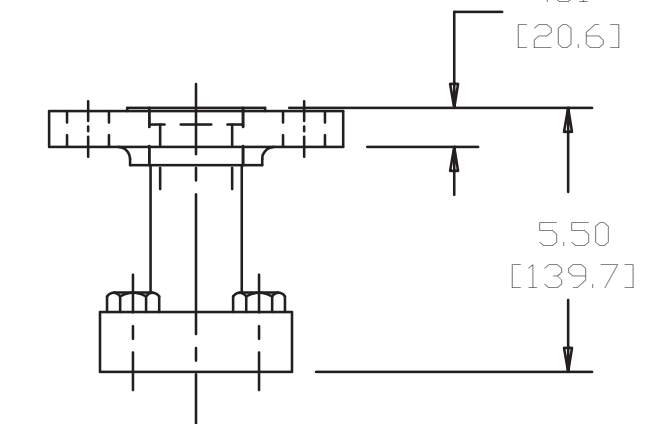
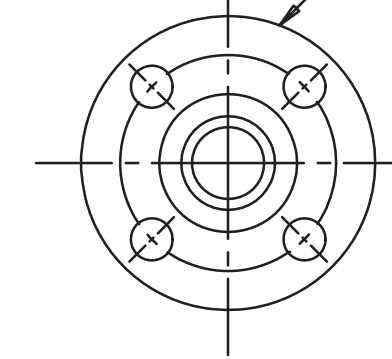
SOCKET WELDING OUTLET OPTION

OUTLET 1-1/2" SIZE 150# ANSI B16.5 RAISED FACE FLANGE HOLES TO STRADDLE CENTERNES



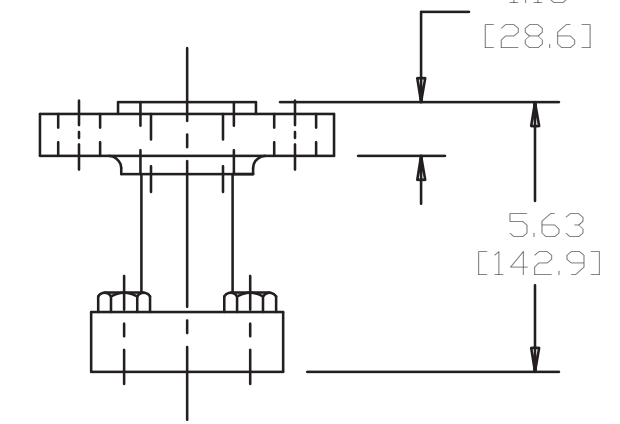
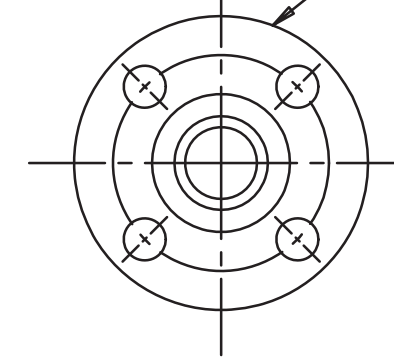
150# RF OUTLET OPTION

OUTLET 1-1/2" SIZE 300# ANSI B16.5 RAISED FACE FLANGE HOLES TO STRADDLE CENTERNES

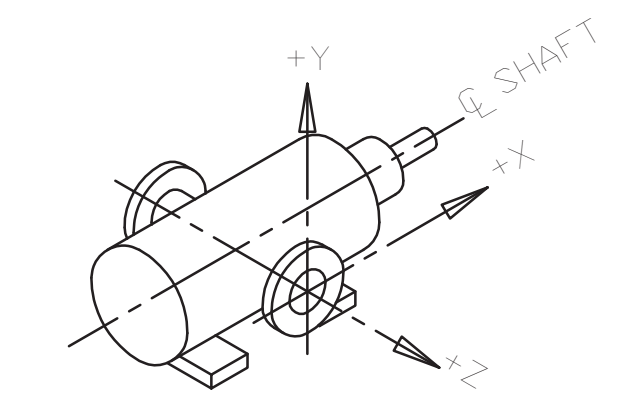


300# RF OUTLET OPTION

OUTLET 1-1/2" SIZE 600# ANSI B16.5 RAISED FACE FLANGE HOLES TO STRADDLE CENTERNES



600# RF OUTLET OPTION



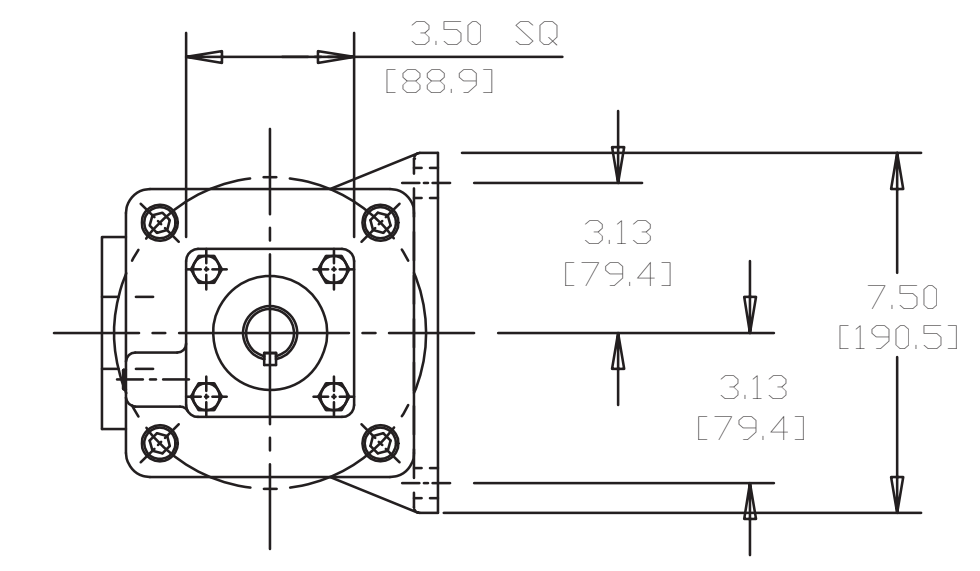
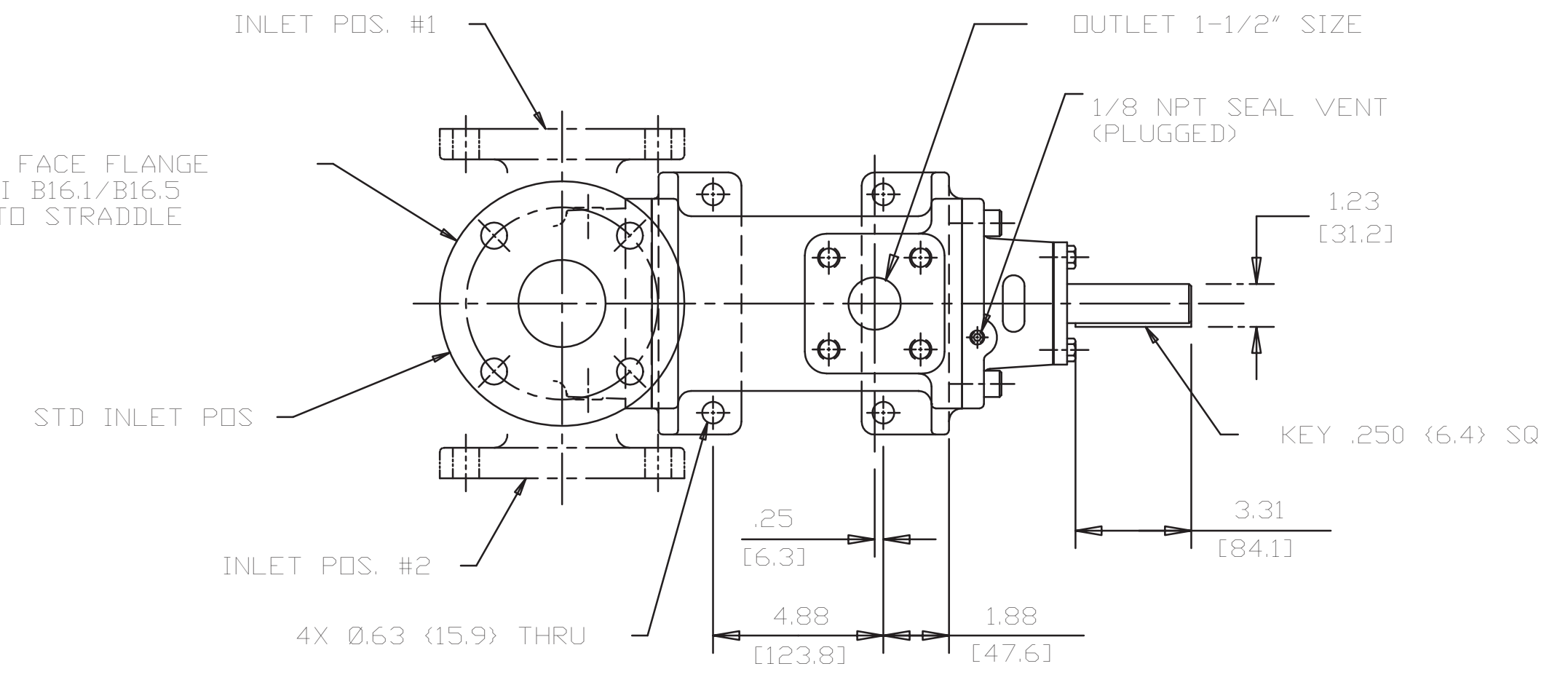
COORDINATE SYSTEM FOR MAXIMUM PUMP FORCES (F) AND MOMENTS (M)

INLET:
 FX= 188 LBF(836N) MX= 313 LB FT(424N.m)
 FY= 188 LBF(836N) MY= 313 LB FT(424N.m)
 FZ= 188 LBF(836N) MZ= 313 LB FT(424N.m)

OUTLET:
 FX= 113 LBF(500 N) MX= 188 LB FT(254N.m)
 FY= 113 LBF(500 N) MY= 188 LB FT(254N.m)
 FZ= 113 LBF(500 N) MZ= 188 LB FT(254N.m)

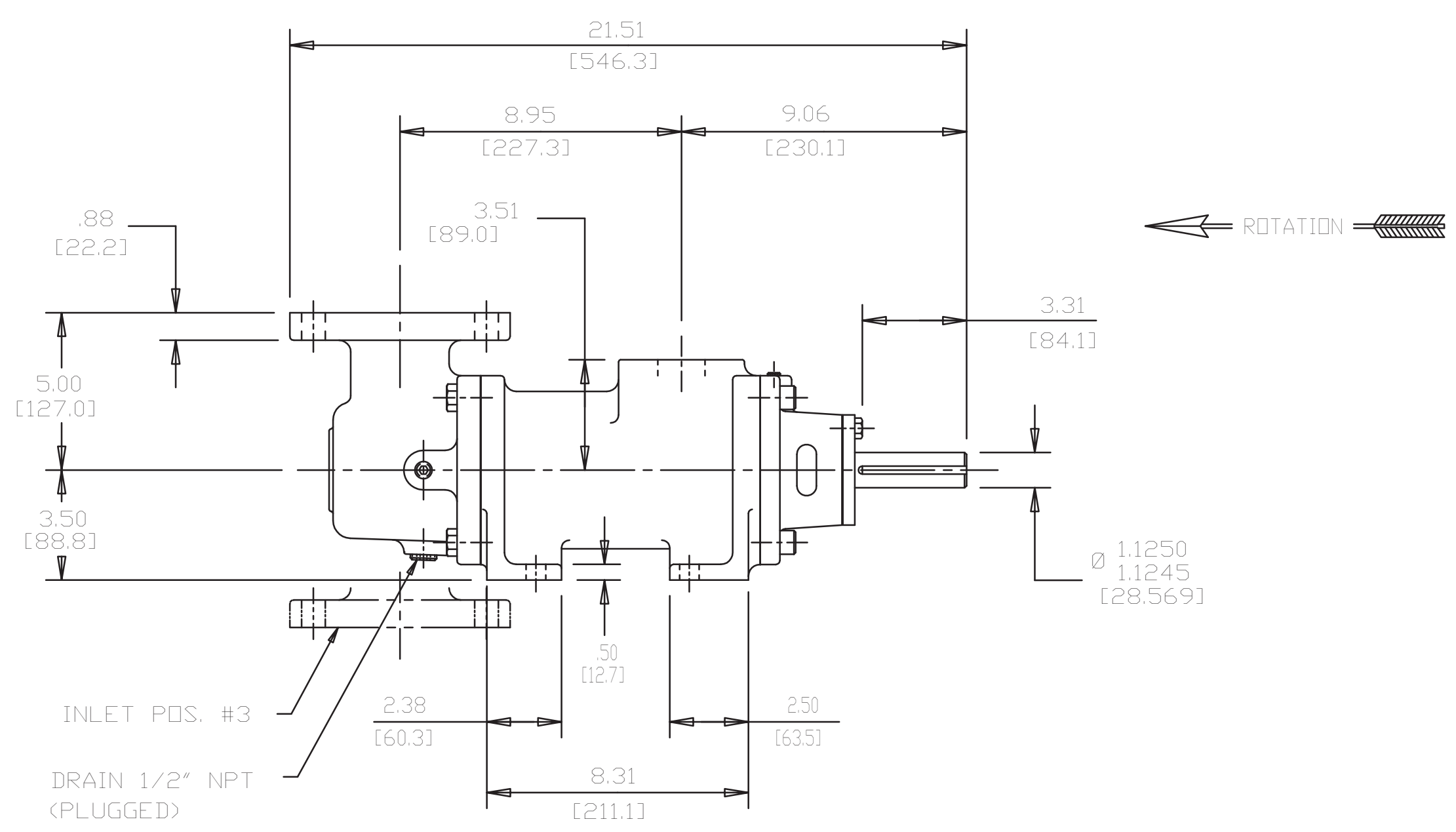
FORCE AND MOMENT VALUES ARE RELATIVE TO CENTER OF INLET AND OUTLET PORT FACES.

INLET 2-1/2" SIZE 150# FLAT FACE FLANGE WILL MATE TO 125#/150# ANSI B16.1/B16.5 RAISED FACE FLANGE HOLES TO STRADDLE CENTERNES



- NOTES:
- UNLESS OTHERWISE SPECIFIED, ALL DIMENSIONS ARE IN INCHES. DIMENSIONS IN [] ARE MILLIMETERS.
 - TO MAXIMIZE SEAL LIFE, SEAL VENT MUST BE ORIENTED UPWARD (12 O'CLOCK) WHEN PUMP IS INSTALLED HORIZONTALLY. THIS IS NORMAL VENT ORIENTATION WHEN PUMP FEET ARE ORIENTED DOWNWARD. SEAL VENT ORIENTATION IS NOT CRITICAL WHEN PUMP IS INSTALLED WITH SHAFT VERTICALLY UPWARD.
 - PORT, FOOT, AND SEAL VENT ORIENTATIONS ARE SUPPLIED AS SHOWN ON DRAWING UNLESS OTHERWISE SPECIFIED.
 - ALTERNATE INLET PORT POSITIONS ARE PROVIDED IF SPECIFIED ON ORDER. AVAILABLE POSITIONS ARE: STANDARD, POSITION #1, POSITION #2 OR POSITION #3. ALL INLET PORT POSITIONS ARE RELATIVE TO OUTLET PORT.
 - ESTIMATED WEIGHT (WITHOUT PORT ADAPTERS) 97 LBS (44.0 kg).

DRAWING CERTIFICATION	
CUSTOMER NAME	-----
CUSTOMER PO NUMBER	-----
CUSTOMER PART NUMBER	-----
BOM NUMBER	-----
PUMP TYPE	-----
SHAFT ROTATION	-----
INLET PORT POSITION	-----
OUTLET PORT ADAPTER OPTION	-----
OTHER INFORMATION	
CERTIFIED BY	-----
CERTIFIED DATE	-----
IMO ORDER NUMBER	-----
DATA REVISION NUMBER	-----



DRAWN		DMS		2-15-96	
CHECKED		MJC		2-20-96	
APPD		MJC		2-20-96	
PROCESS		METHODS			
UNLESS OTHERWISE SPECIFIED ASME Y14.5M-1994.					
COMMENTS: SUCTION STRAINER AND DISCHARGE RELIEF VALVE MUST BE PROVIDED. ALIGNMENT: UNITS ARE ACCURATELY ALIGNED AT THE FACTORY. ALIGNMENT SHOULD BE CHECKED BEFORE STARTING TO ENSURE THAT IT IS STILL WITHIN .005 (0.127) MM. PRE-STARTING: FLUSH SUCTION PIPING BEFORE CONNECTING PUMP. PRIME AND VENT PUMP. READ INSTRUCTION MANUAL FOR DETAILS BEFORE STARTING.					
FIRST ORDER		SIZE		CAGE CODE	
807222		D		59180	
DWG NO		SHEET		OF	
3210/151		SCALE		1/4	
WEIGHT		SEE NOTE 5		SHEET	
				OF	



TITLE
OUTLINE STANDARD __3D__S_-187_

SDD18561