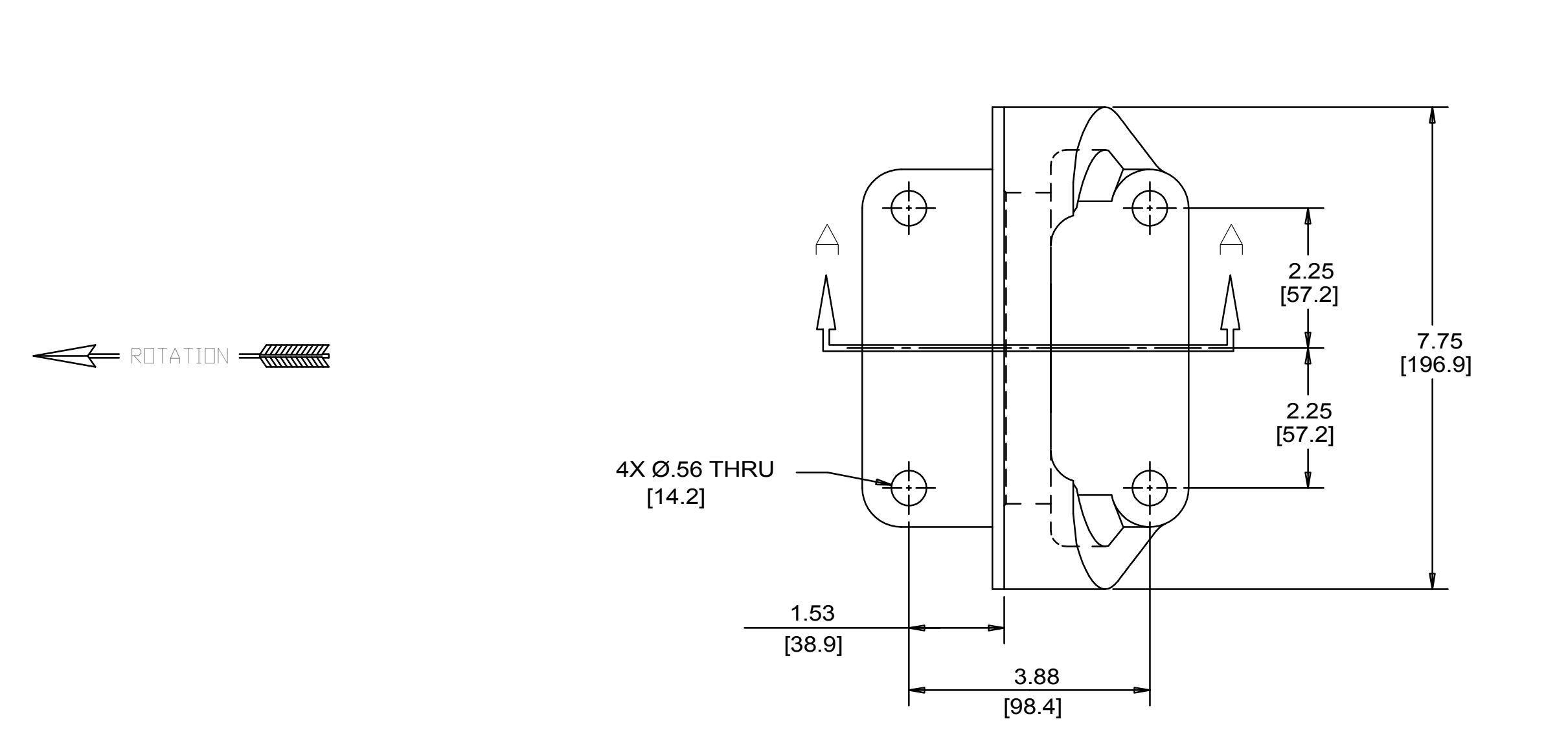
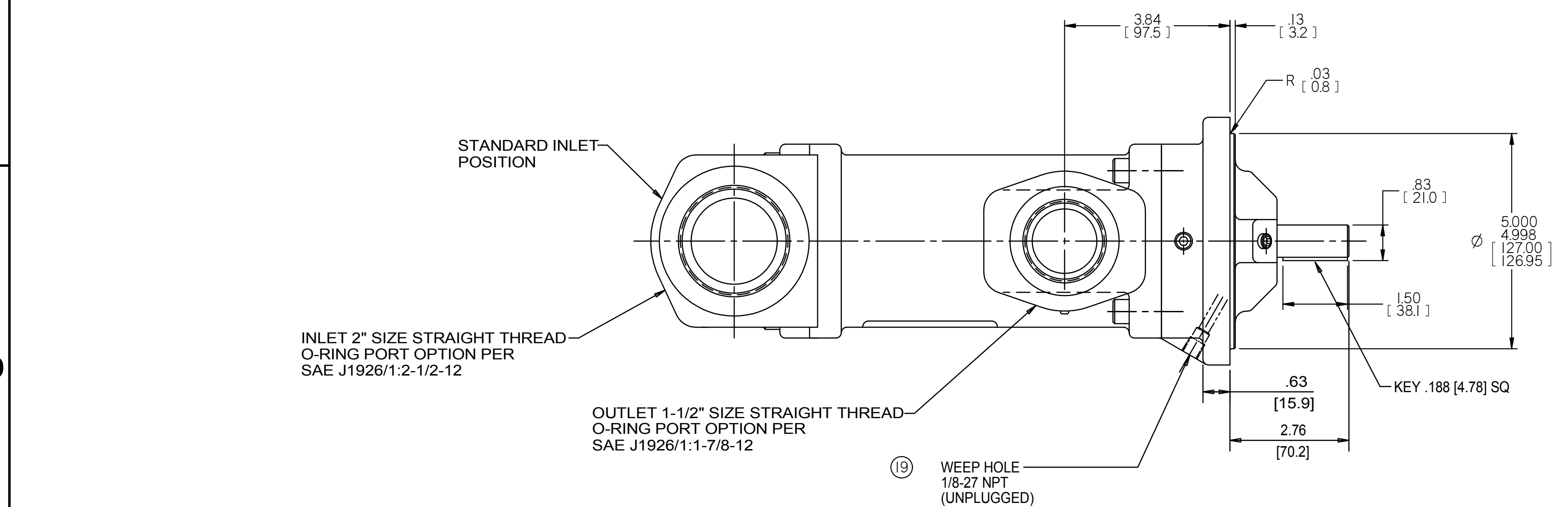
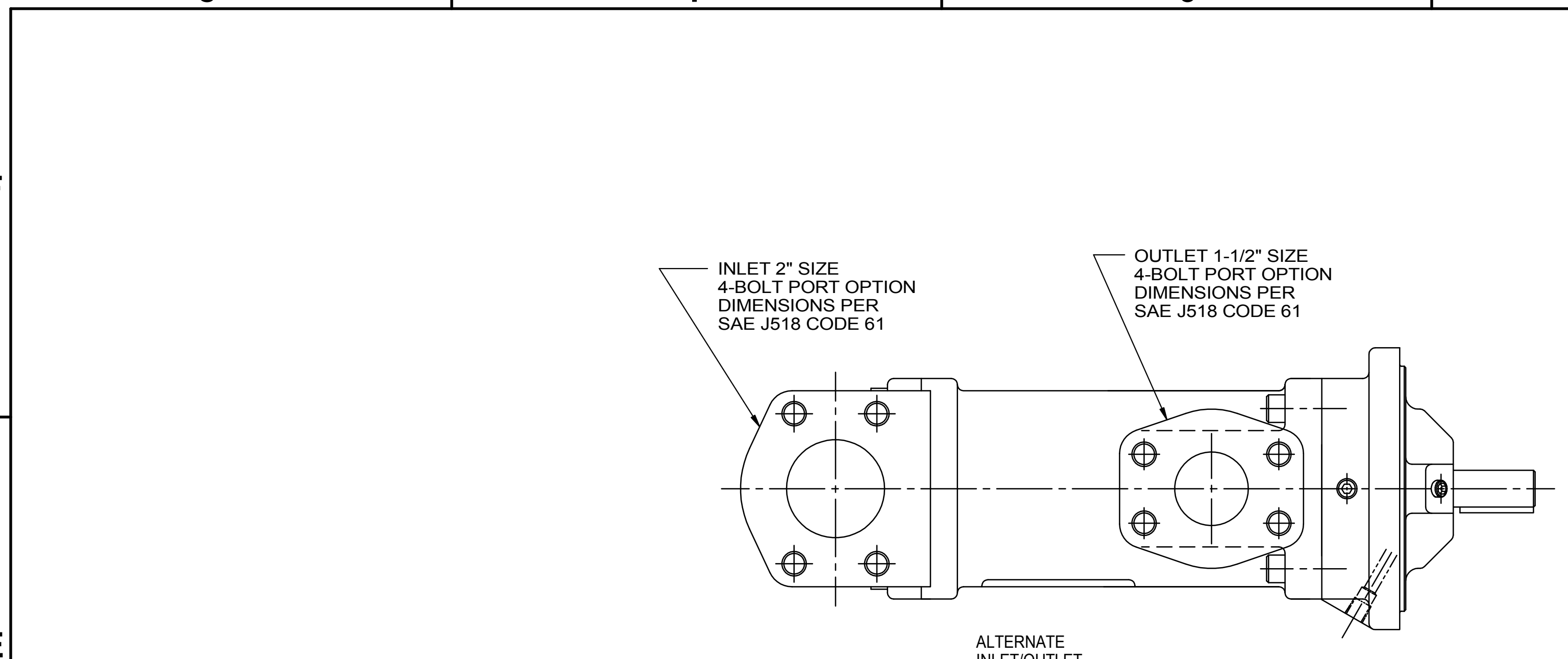
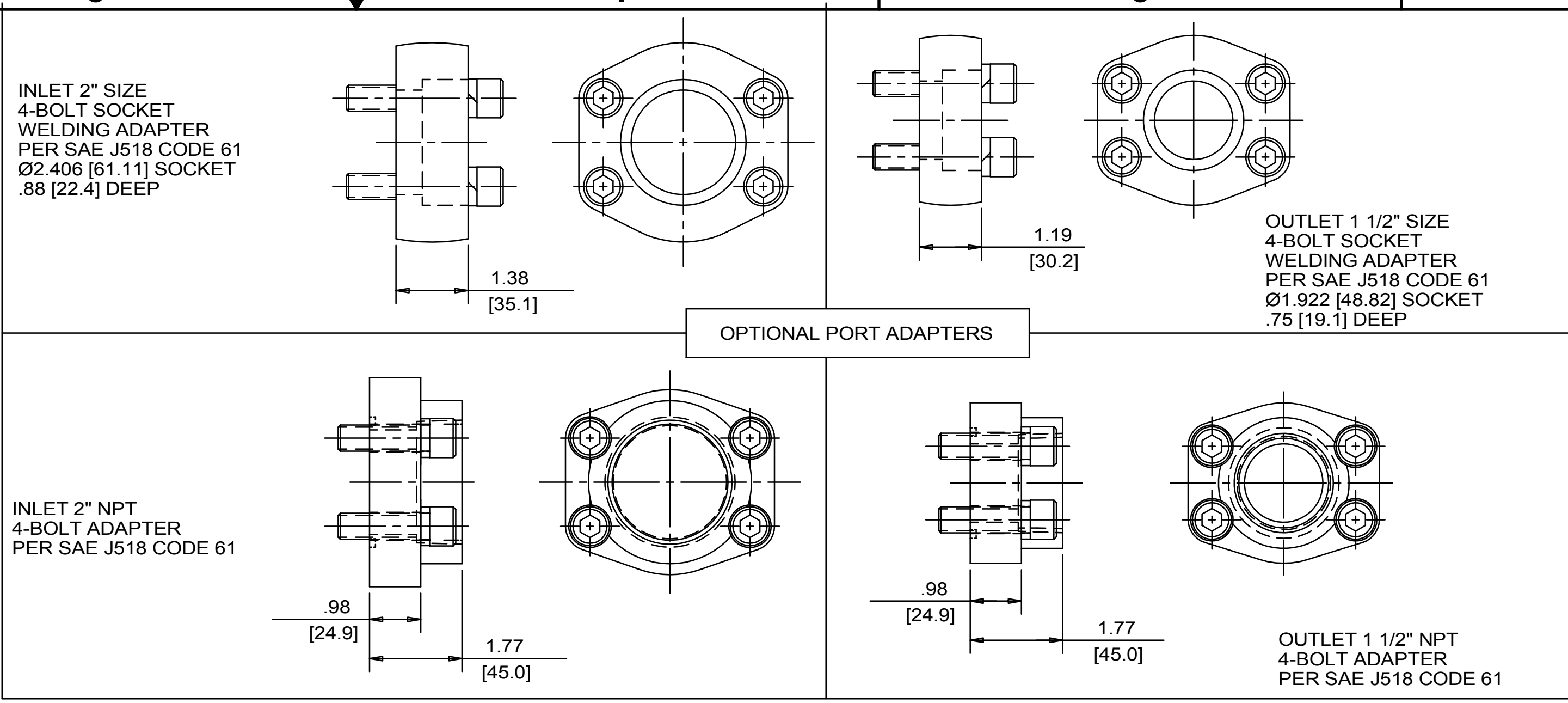


REVISION HISTORY					
CHG NO	ZONE	REV	DESCRIPTION	DATE	BY / APPROVED
15-0724	A1	19	REMOVED (OPTIONAL) FROM NOTE	12-17-15	CHH / CHH
16-0004	B1	20	ADDED DROP DOWNS IN CERTIFICATION BLOCK	01-05-16	CHH / CHH
22-0000	ALL	21	UPDATE TITLE BLOCK, FORCES & MOMENTS STAMP	1-26-22	CDG / CDG

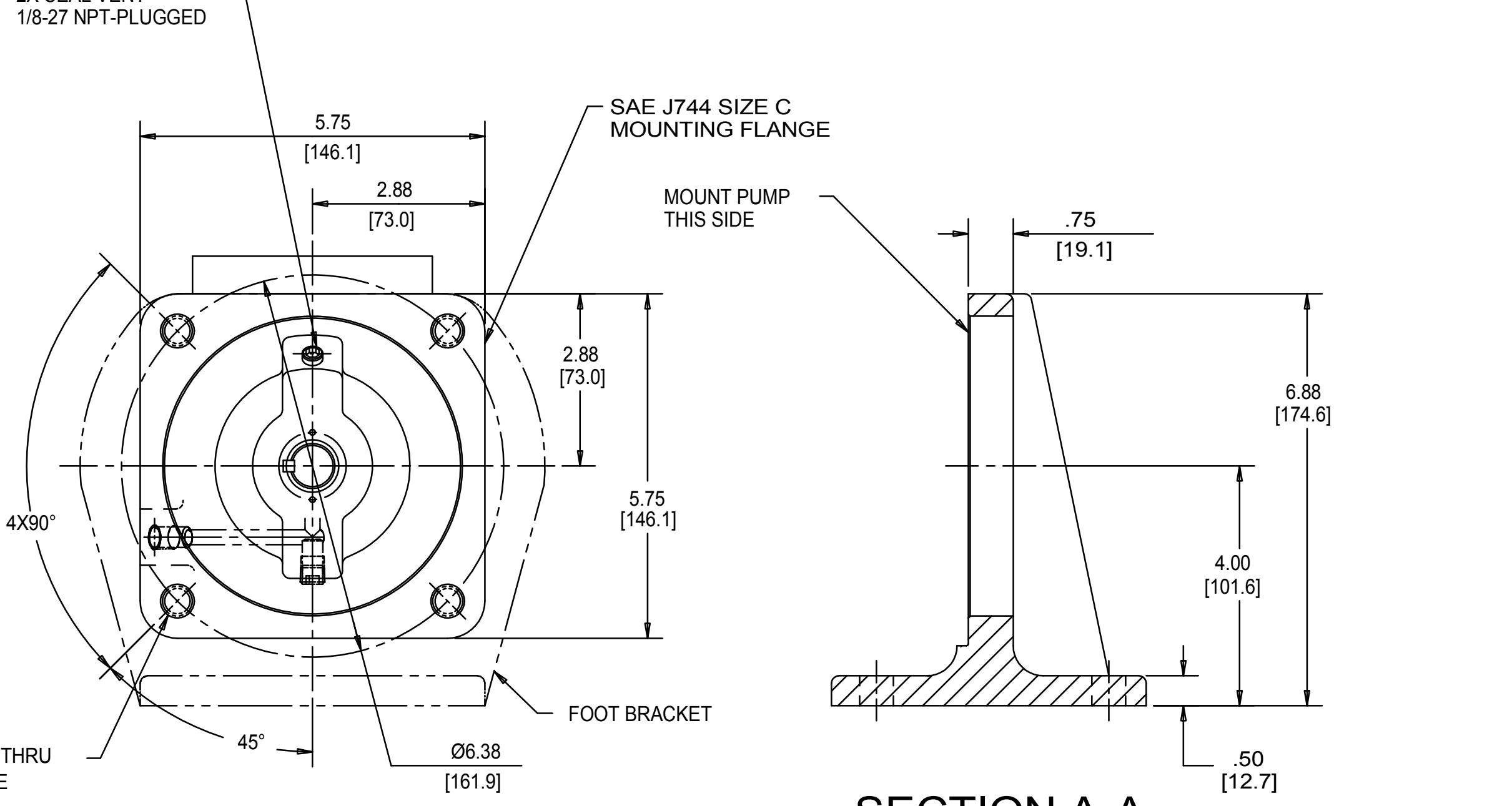
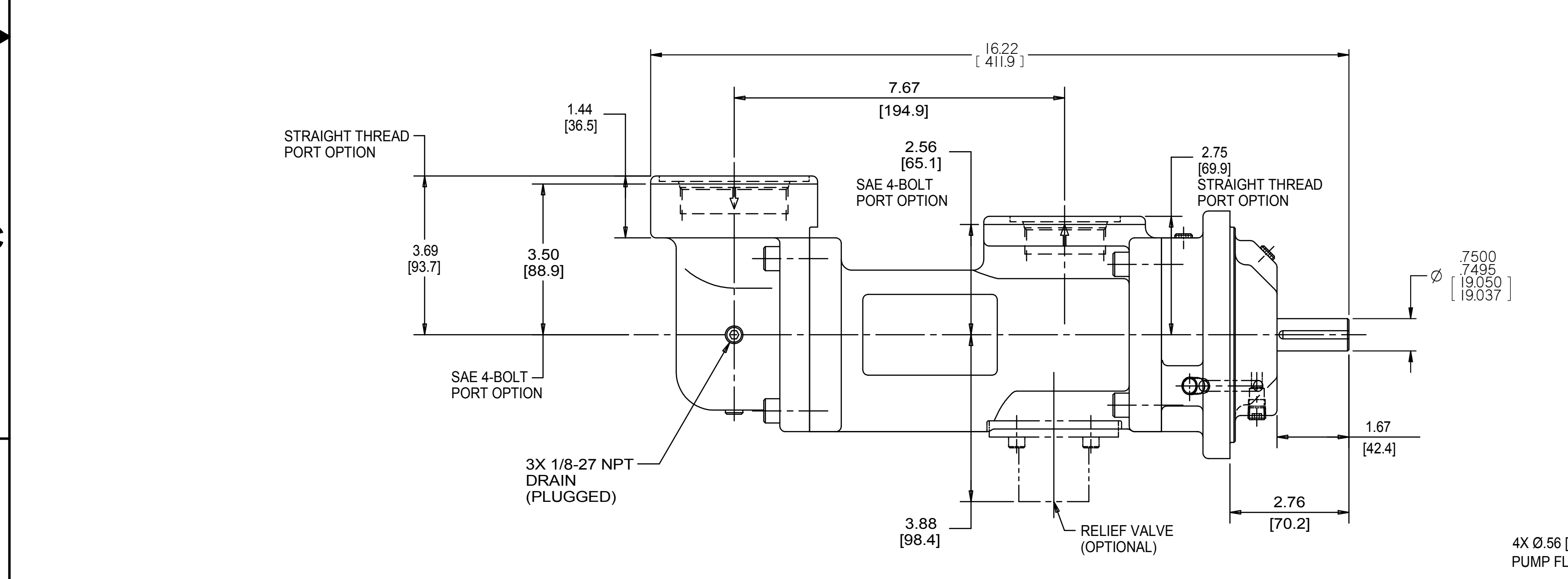


COORDINATE SYSTEM FOR MAXIMUM PUMP FORCES (F) AND MOMENTS (M)

	LB F	N
INLET Fx, Fy, Fz	150	667
OUTLET Fx, Fy, Fz	113	500

	LB FT	Nm
INLET Mx, My, Mz	250	339
OUTLET Mx, My, Mz	188	254

FORCE AND MOMENT VALUES ARE RELATIVE TO CENTER OF INLET AND OUTLET PORT FACES.



DRAWING CERTIFICATION

SEAL VENT

12 O'CLOCK

SHAFT

9 O'CLOCK

3 O'CLOCK

6 O'CLOCK

SEE NOTES 1, 2 & 3

CUSTOMER NAME _____

CUSTOMER PO NUMBER _____

CUSTOMER PART NUMBER _____

BOM NUMBER _____

PUMP TYPE _____

SHAFT ROTATION _____

INLET PORT ORIENTATION _____

OUTLET PORT ORIENTATION _____

FOOT BRKT. ORIENTATION _____

INLET PORT OPTION _____

INLET ADAPTER OPTION _____

OUTLET PORT OPTION _____

OUTLET ADAPTER OPTION _____

RELIEF VALVE SET PRESSURE, IF APPLICABLE _____

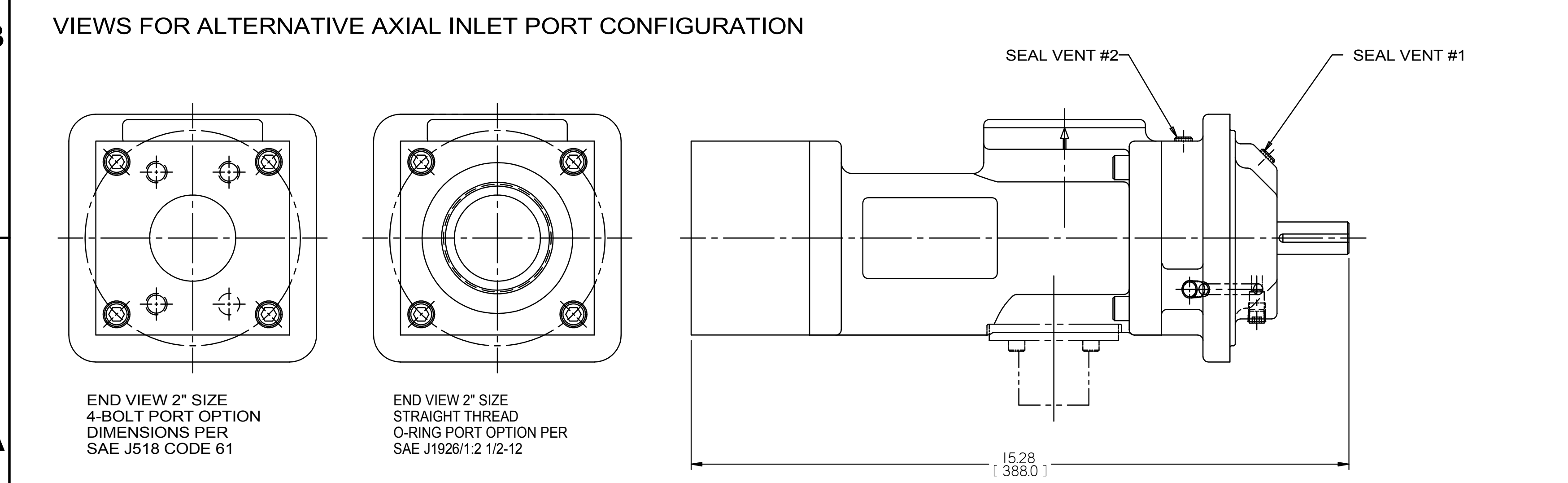
OTHER INFORMATION _____

CERTIFIED BY _____

CERTIFIED DATE _____

IMO ORDER NUMBER _____

DATA REVISION NUMBER _____



- NOTES:
- TO MAXIMIZE SEAL LIFE, SEAL VENT MUST BE ORIENTED UPWARD (12 O'CLOCK) WHEN PUMP IS INSTALLED HORIZONTALLY. VENT ORIENTATION IS NOT CRITICAL WHEN PUMP IS INSTALLED WITH SHAFT VERTICALLY UPWARD.
 - PORT, FOOT, AND SEAL VENT ORIENTATIONS ARE SUPPLIED AS SHOWN ON DRAWING UNLESS OTHERWISE SPECIFIED.
 - ALTERNATE PORT AND FOOT ORIENTATIONS ARE PROVIDED IF SPECIFIED ON ORDER. AVAILABLE ORIENTATIONS ARE 3, 6, 9, AND 12 O'CLOCK.
 - BOLT PATTERN FOR SAE 4-BOLT AXIAL INLET IS ALWAYS ORIENTED AS SHOWN WITH RESPECT TO OUTLET PORT.
 - APPROXIMATE PUMP WEIGHT (WITHOUT ADAPTERS):
FLANGE MOUNT PUMP--- 44.3 LBS. (20.1 kgs)
FOOT MOUNT PUMP--- 56.5 LBS. (25.7 kgs)
 - UNLESS OTHERWISE SPECIFIED, ALL DIMENSIONS ARE IN INCHES. DIMENSIONS IN [] ARE MILLIMETERS.

DRAWN	ERH	1-7-99			
CHECKED	CDG	1-7-99			
APPROVED	MJC	1-7-99			
PROCESS	UNLESS OTHERWISE SPECIFIED ASME Y14.5M-1994			TITLE	OUTLINE STANDARD (IRON)
<small> ELEMENTS: SECTION STRAINER AND DISCHARGE RELIEF VALVE MUST BE PROVIDED ALIGNMENT: UNITS ARE ACCURATELY ALIGNED AT THE FACTORY. ALIGNMENT SHOULD BE CHECKED BEFORE STARTING TO INSURE THAT IT IS STILL WITHIN COS ID (IF APPLICABLE) PRECAUTIONS: FLUSH SECTION PRIOR TO CONNECTING PUMP. PRIME AND VENT PUMP. READ INSTRUCTION MANUAL FOR DETAILS BEFORE STARTING. </small>				FIRST ORDER E1101A	PART NO. 59180
SCALE	1/2	WEIGHT	SEE NOTE 5	SHEET	1 OF 1