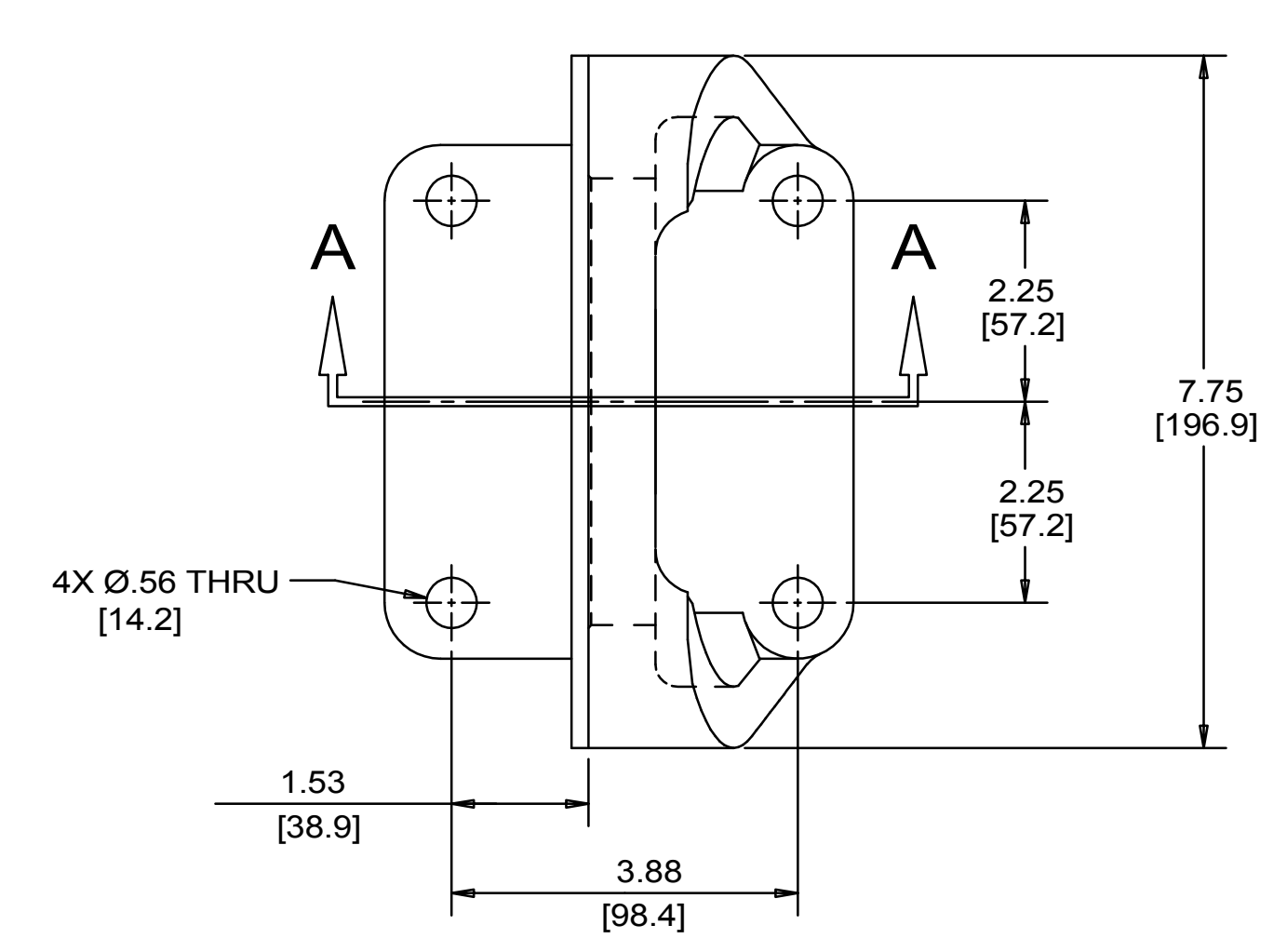
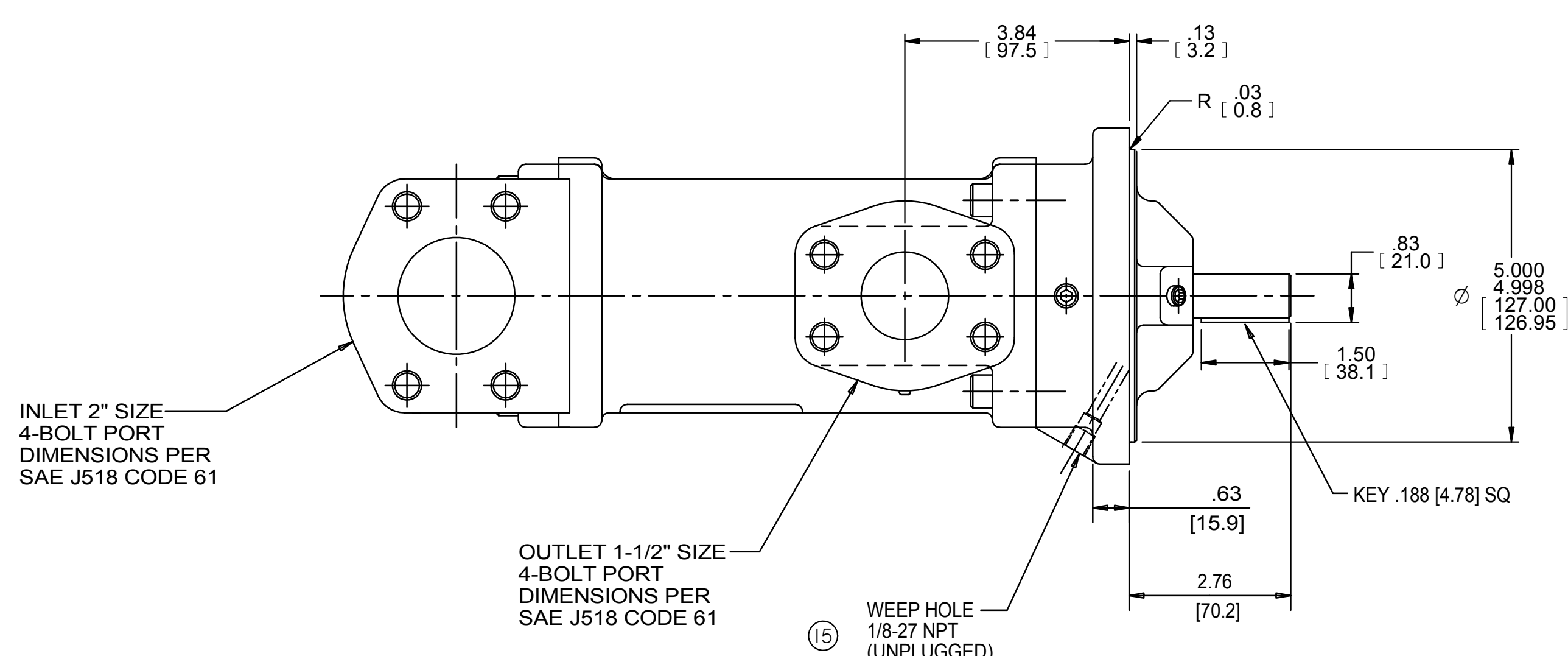
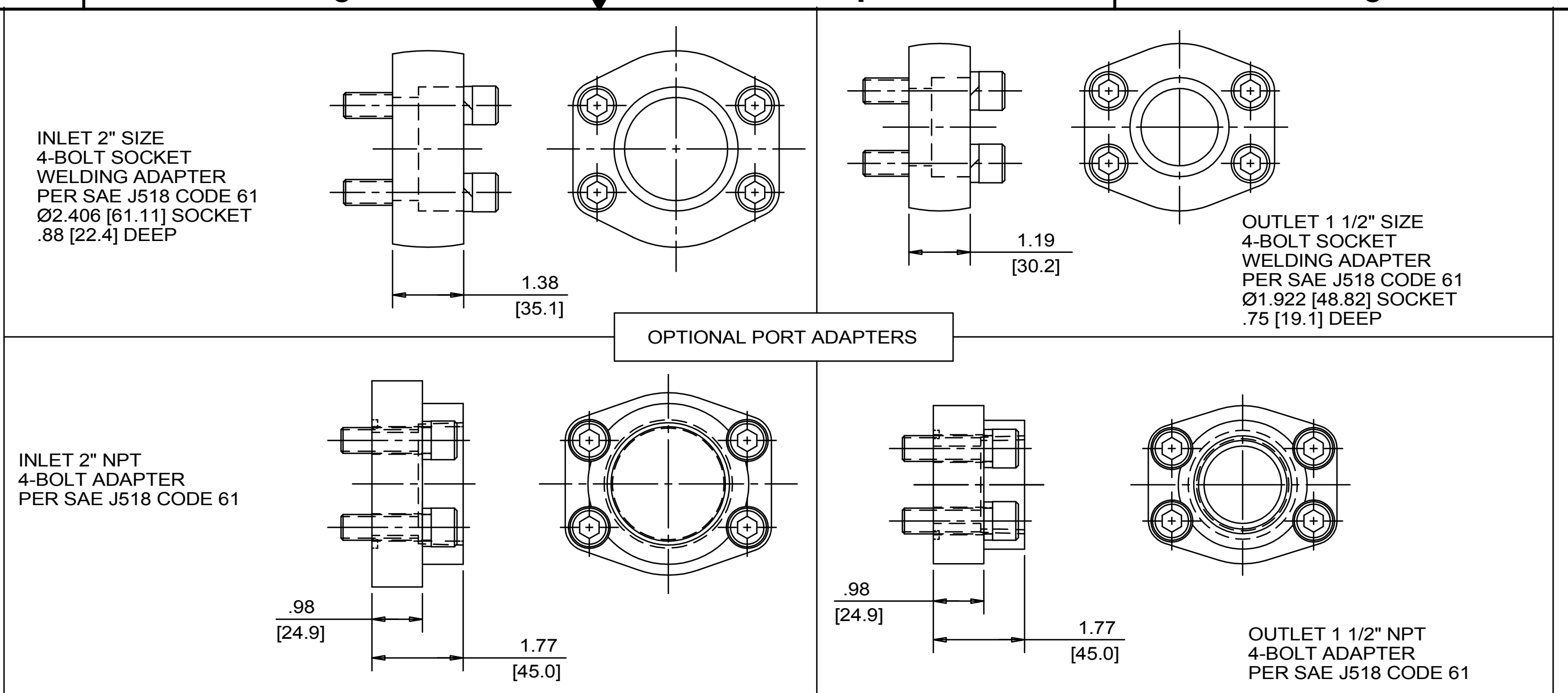


REVISION HISTORY				DATE	BY	APPROVED
CHG NO	ZONE	REV	DESCRIPTION			
22-0000	ALL	18	UPDATE TITLE BLOCK, FORCES & MOMENT STAMP	1-26-22	CDG	CDG

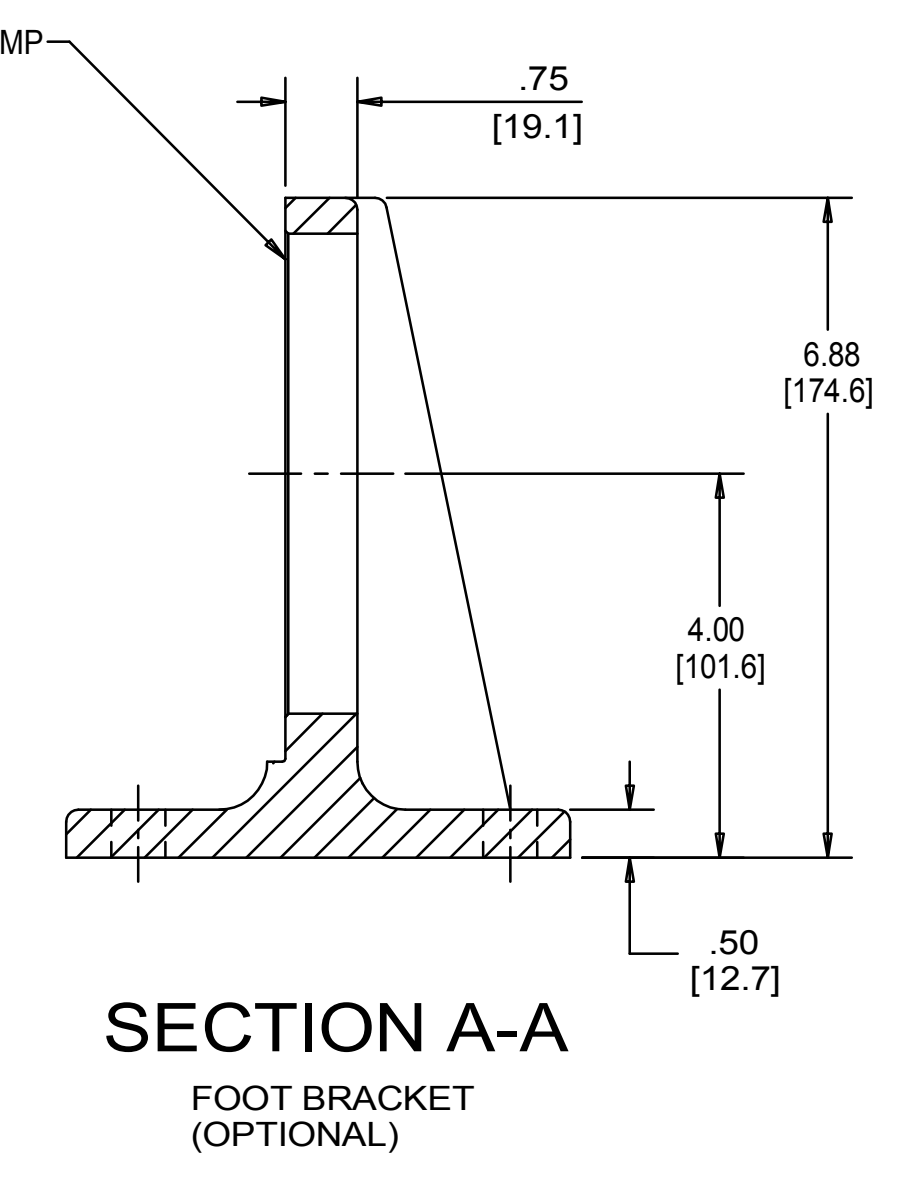
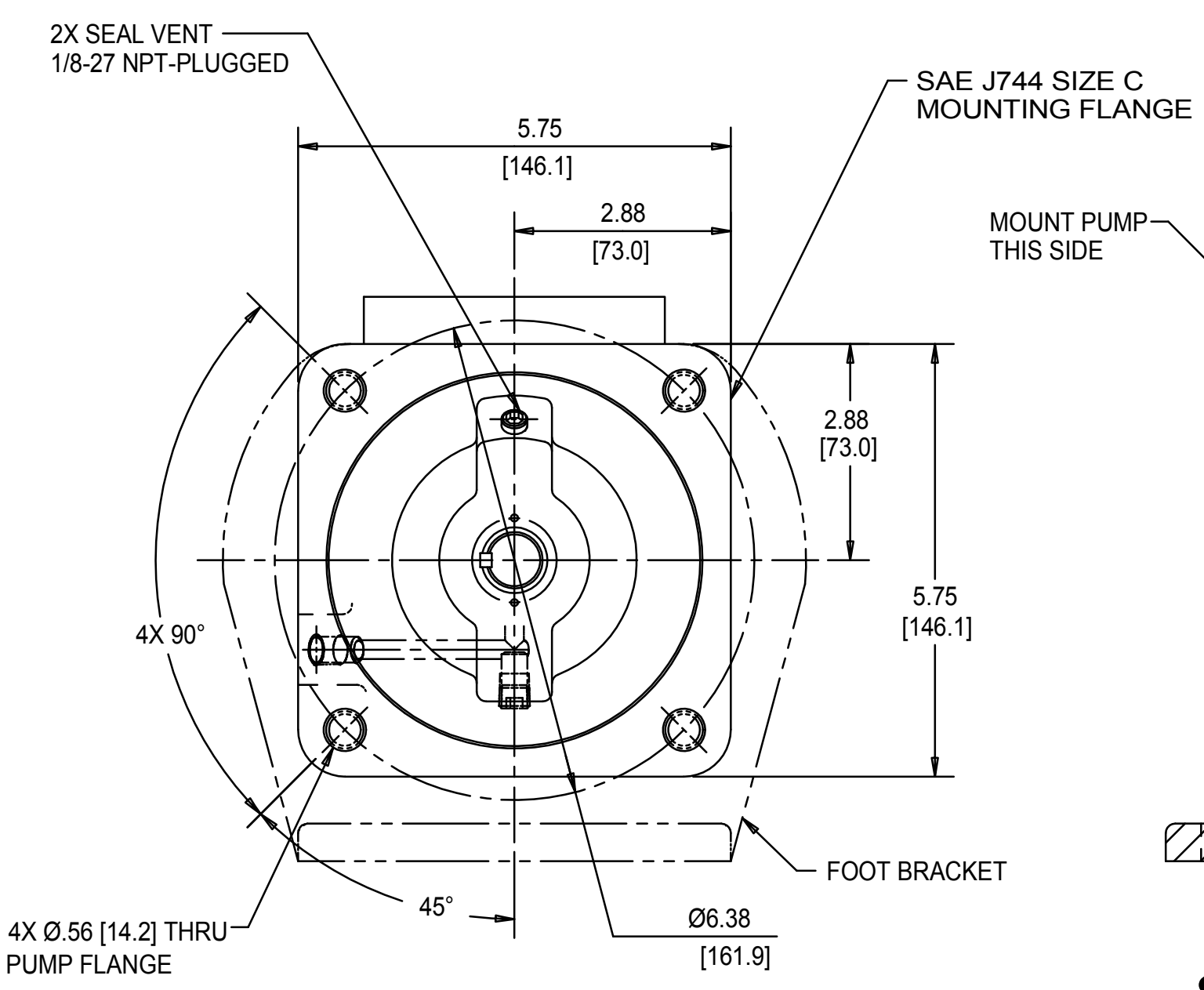
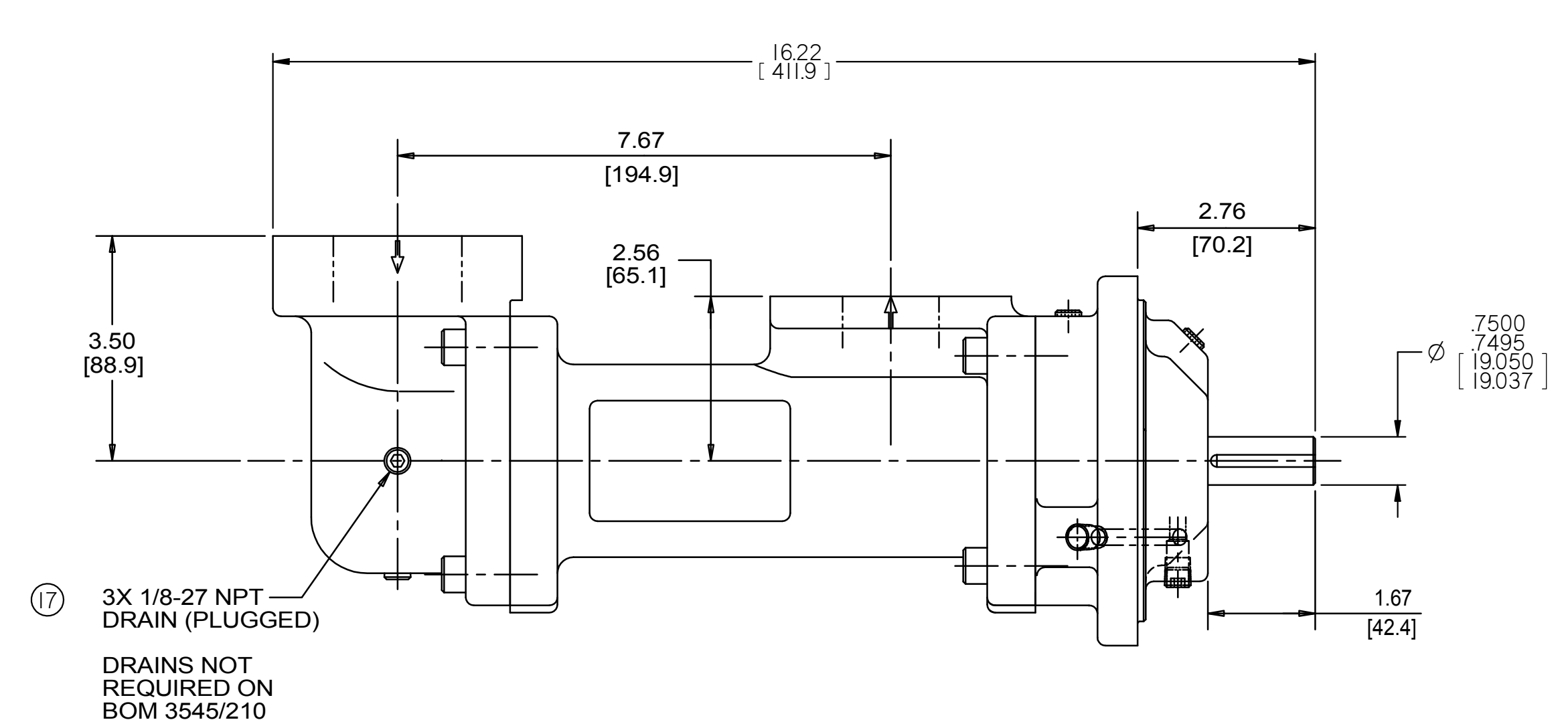


COORDINATE SYSTEM FOR MAXIMUM PUMP FORCES (F) AND MOMENTS (M)

	LBF	N
INLET Fx, Fy, Fz	150	667
OUTLET Fx, Fy, Fz	113	500

	LB FT	Nm
INLET Mx, My, Mz	250	339
OUTLET Mx, My, Mz	188	254

FORCE AND MOMENT VALUES ARE RELATIVE TO CENTER OF INLET AND OUTLET PORT FACES.



DRAWING CERTIFICATION

SEAL VENT

SHAFT

12 O'CLOCK

9 O'CLOCK

3 O'CLOCK

6 O'CLOCK

SEE NOTES 1, 2 & 3

CUSTOMER NAME -----

CUSTOMER PO NUMBER -----

CUSTOMER PART NUMBER -----

BOM NUMBER -----

PUMP TYPE -----

SHAFT ROTATION -----

INLET PORT ORIENTATION -----

OUTLET PORT ORIENTATION -----

INLET PORT OPTION -----

INLET ADAPTER OPTION -----

OUTLET PORT OPTION -----

OUTLET ADAPTER OPTION -----

OTHER INFORMATION -----

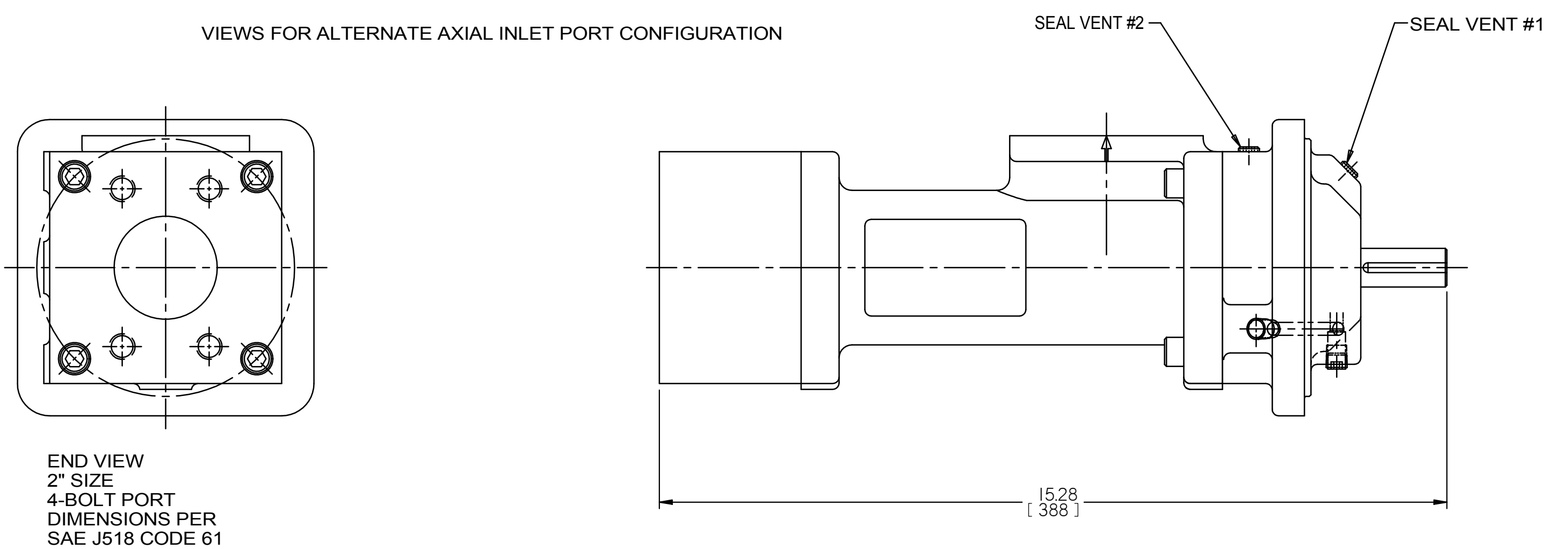
CERTIFIED BY -----

CERTIFIED DATE -----

IMO ORDER NUMBER -----

DATA REVISION NUMBER -----

- NOTES:**
- TO MAXIMIZE SEAL LIFE, SEAL VENT MUST BE ORIENTED UPWARD (12 O'CLOCK) WHEN PUMP IS INSTALLED HORIZONTALLY. VENT ORIENTATION IS NOT CRITICAL WHEN PUMP IS INSTALLED WITH SHAFT VERTICALLY UPWARD.
 - PORT, FOOT, AND SEAL VENT ORIENTATIONS ARE SUPPLIED AS SHOWN ON DRAWING UNLESS OTHERWISE SPECIFIED.
 - ALTERNATE PORT AND FOOT ORIENTATIONS ARE PROVIDED IF SPECIFIED ON ORDER. AVAILABLE ORIENTATIONS ARE 3, 6, 9, AND 12 O'CLOCK.
 - BOLT PATTERN FOR SAE 4-BOLT AXIAL INLET IS ALWAYS ORIENTED AS SHOWN WITH RESPECT TO OUTLET PORT.
 - APPROXIMATE PUMP WEIGHT (WITHOUT ADAPTERS):
FLANGE MOUNT PUMP----- 42.8 LBS. (19.4 kgs)
FOOT MOUNT PUMP----- 54.9 LBS. (25.0 kgs)
 - UNLESS OTHERWISE SPECIFIED, ALL DIMENSIONS ARE IN INCHES. DIMENSIONS IN () ARE MILLIMETERS.



DRAWN	ERH	3-3-99								
CHECKED	NRS	4-8-99								
APPROVED	MJC	4-8-99								
MATERIAL	UNLESS OTHERWISE SPECIFIED ASME Y14.5M-1994			TITLE	OUTLINE STANDARD (STEEL)					
PROCESS	<small> ELEMENTS: SUCTION STRAINER AND DISCHARGE RELIEF VALVE MUST BE PROVIDED ALIGNMENT: UNITS ARE ACCURATELY ALIGNED AT THE FACTORY. ALIGNMENT SHOULD BE CHECKED BEFORE STARTING TO ENSURE THAT IT IS STILL WITHIN TOL- ERANCES. PRESTARTING: FLUSH SUCTION PUMP BEFORE CONNECTING PUMP. PRIME AND VENT PUMP. READ INSTRUCTION MANUAL FOR DETAILS BEFORE STARTING. </small>			SIZE	3G/_S_A[143/162]_					
IDENTIFICATION	FIRST ORDER	E1102A	SCALE	1/2	WEIGHT	SEE NOTE 5	SHEET	1	OF	1