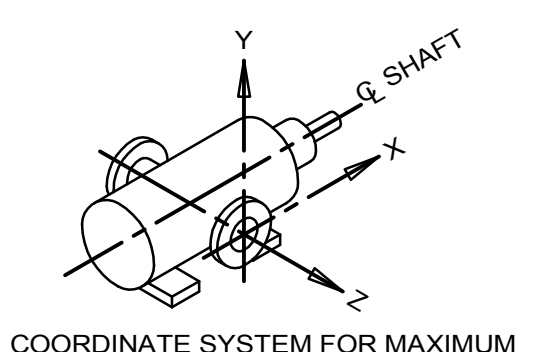
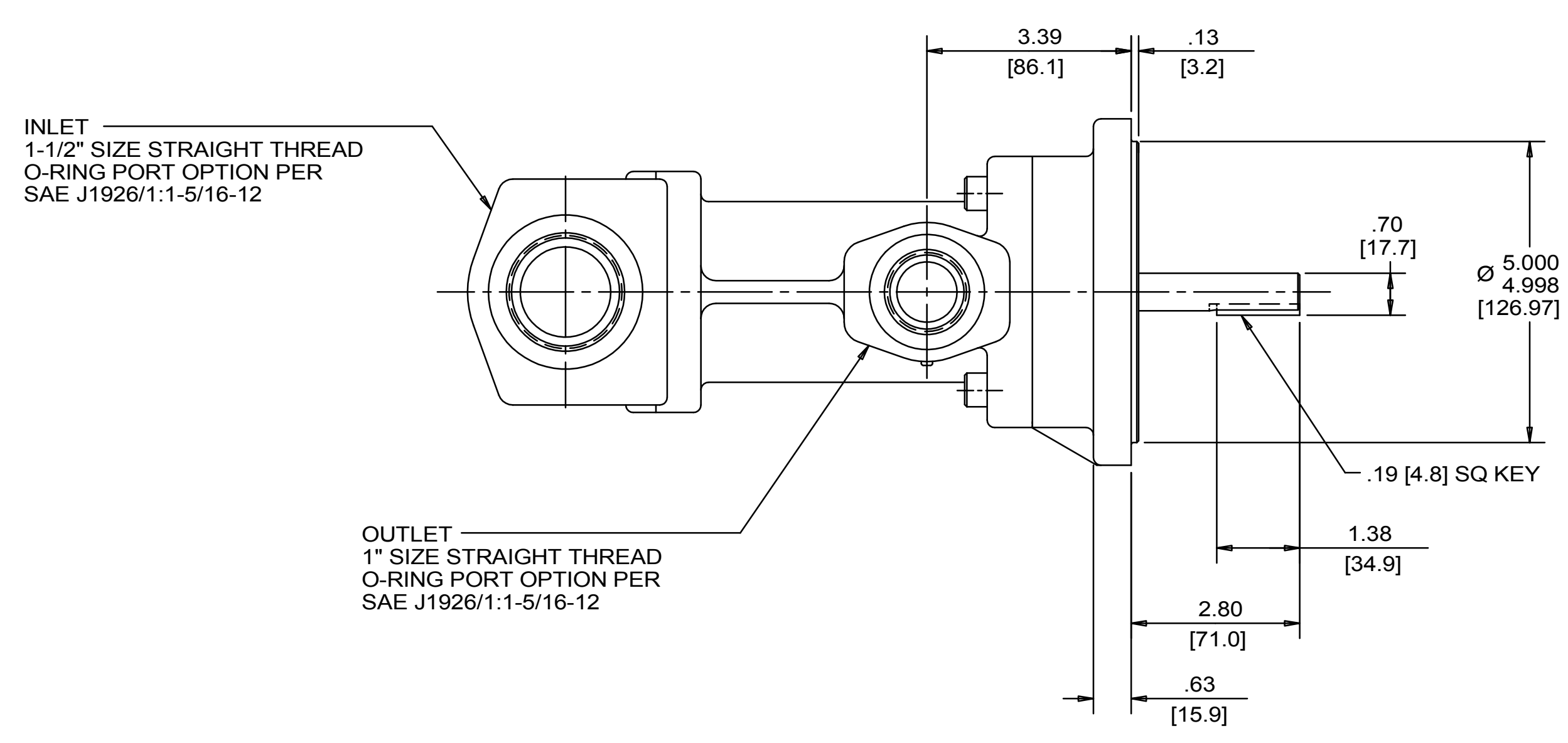
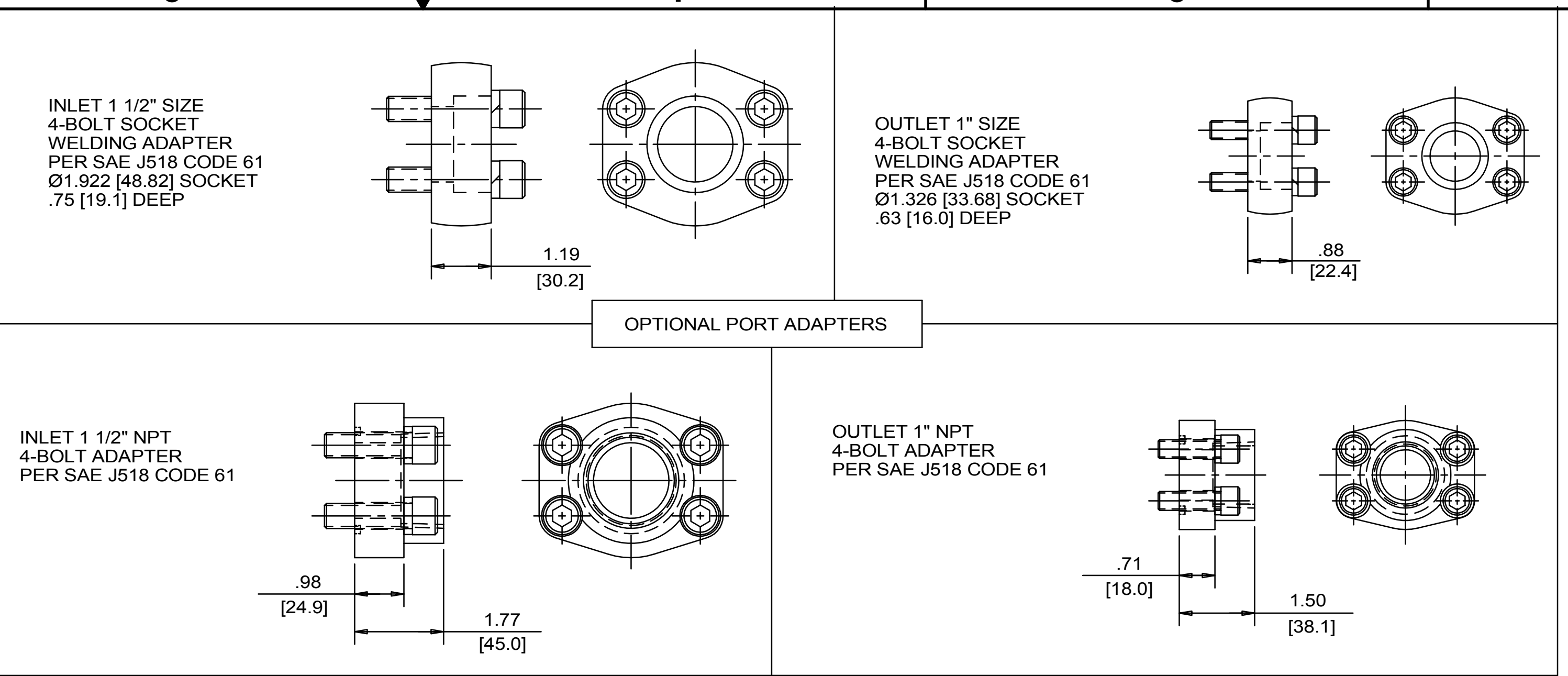
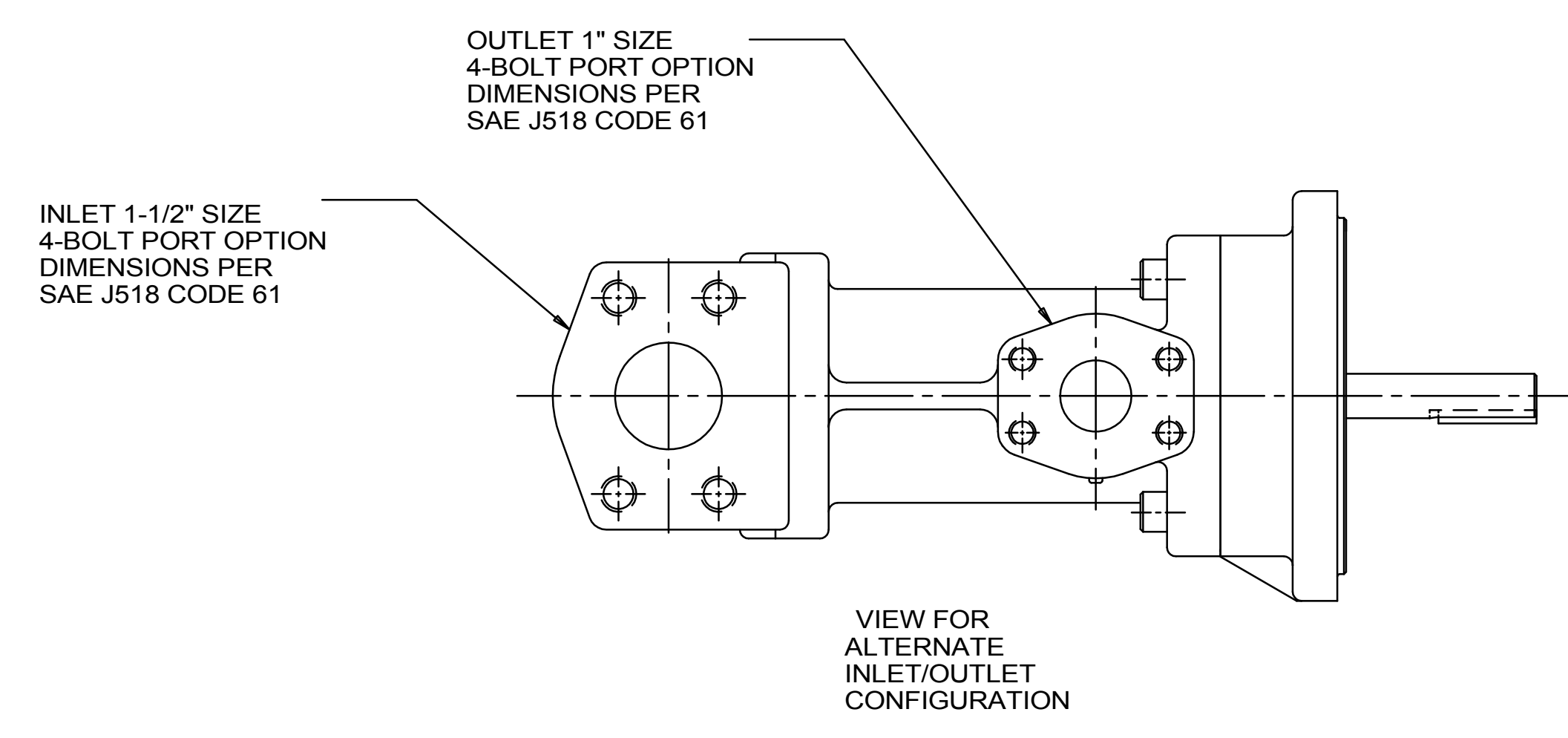


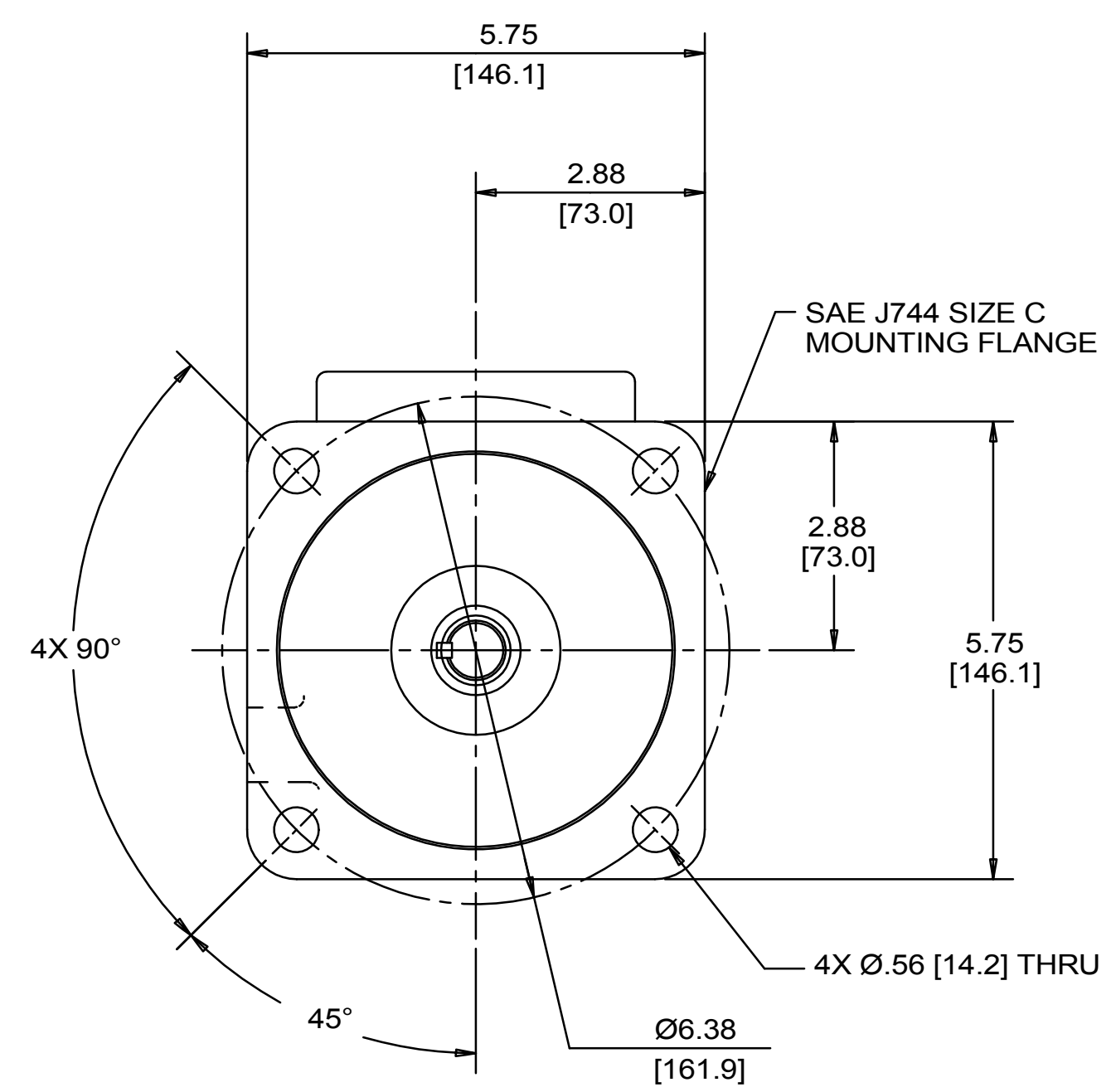
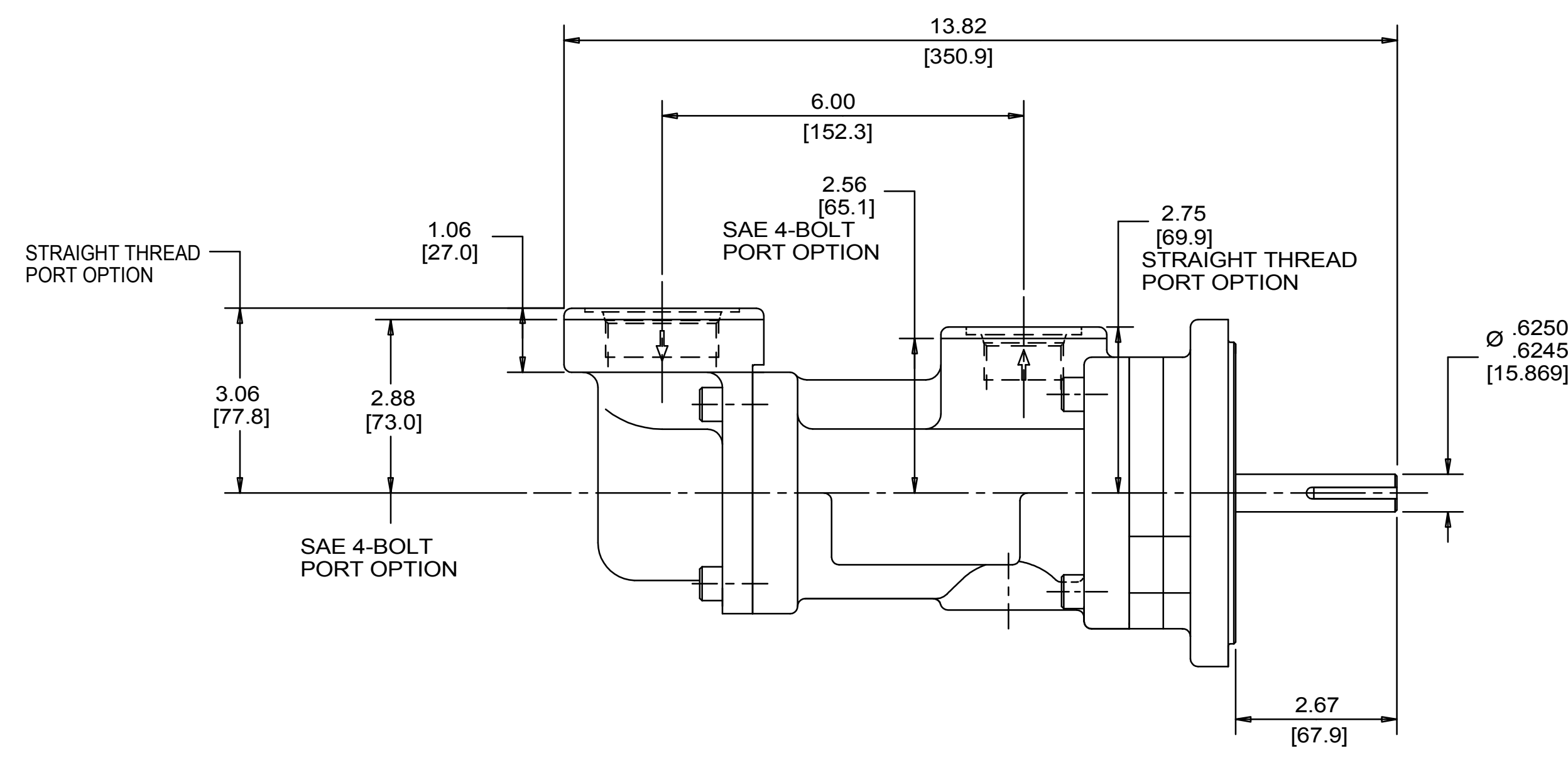
REVISION HISTORY					
CHG NO	ZONE	REV	DESCRIPTION	DATE	BY / APPROVED
11-0187	AI	5	CHANGED TITLE, WAS AA3G	5-17-11	ERH / ERH
22-0000	ALL	6	UPDATED TITLE BLOCK, FORCES & MOMENTS STAMP	1-27-22	CDG / CDG



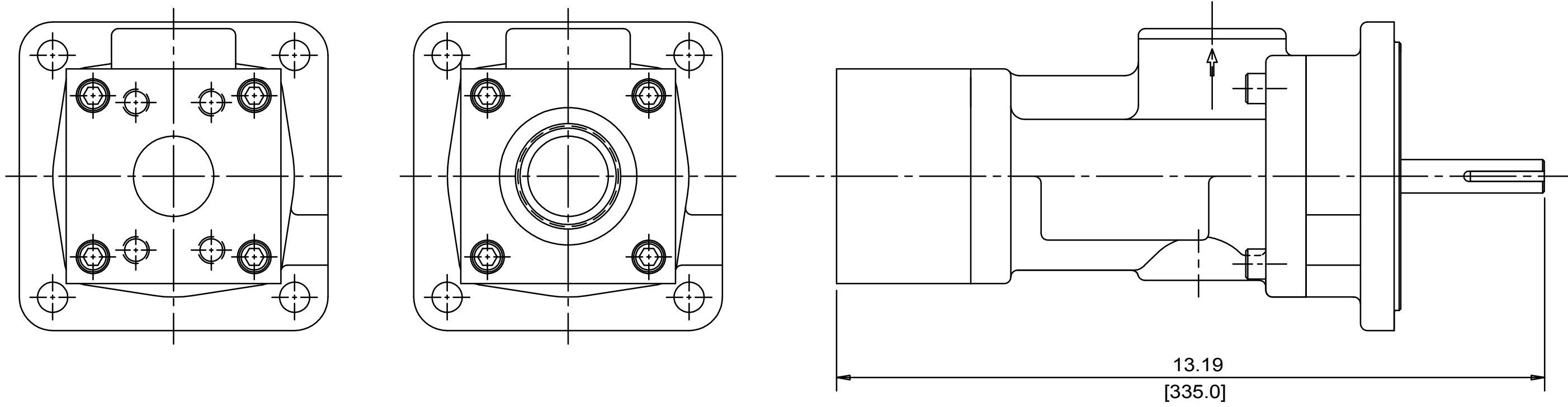
	LBF	N
INLET: Fx, Fy, Fz	113	500
OUTLET: Fx, Fy, Fz	75	334

	LB FT	Nm
INLET: Mx, My, Mz	188	254
OUTLET: Mx, My, Mz	125	169

FORCE AND MOMENT VALUES ARE RELATIVE TO CENTER OF INLET AND OUTLET PORT FACES.



VIEWS FOR ALTERNATE AXIAL INLET PORT CONFIGURATION



- NOTES:
1. PORT ORIENTATIONS SUPPLIED AS SHOWN UNLESS OTHERWISE SPECIFIED.
 2. ALTERNATE RADIAL INLET PORT ORIENTATIONS PROVIDED IF SPECIFIED ON ORDER. AVAILABLE ALTERNATE ORIENTATIONS ARE 3, 6, 9, AND 12 O'CLOCK RELATIVE TO OUTLET PORT.
 3. BOLT PATTERN FOR SAE 4-BOLT AXIAL INLET IS ALWAYS ORIENTED AS SHOWN WITH RESPECT TO OUTLET PORT.
 4. APPROXIMATE PUMP WEIGHT (WITHOUT ADAPTERS): 31.5 LBS. {14.3 kgs}
 5. UNLESS OTHERWISE SPECIFIED, ALL DIMENSIONS ARE IN INCHES. DIMENSIONS IN [] ARE MILLIMETERS.

DRAWING CERTIFICATION

12 O'CLOCK

9 O'CLOCK

3 O'CLOCK

6 O'CLOCK

SEE NOTES 1, 2 & 3

CUSTOMER NAME -----

CUSTOMER PO NUMBER -----

CUSTOMER PART NUMBER -----

BOM NUMBER -----

PUMP TYPE -----

SHAFT ROTATION -----

INLET PORT ORIENTATION -----

INLET PORT OPTION -----

INLET ADAPTER OPTION -----

OUTLET PORT OPTION -----

OUTLET ADAPTER OPTION -----

OTHER INFORMATION -----

CERTIFIED BY -----

CERTIFIED DATE -----

IMO ORDER NUMBER -----

DATA REVISION NUMBER -----

DRAWN	NRS	6-15-99		
CHECKED	NRS	6-15-99		
APPROVED	NRS	6-15-99		
UNLESS OTHERWISE SPECIFIED ASME Y14.5M-1994			TITLE	OUTLINE STANDARD (IRON)
COMMENTS: SUCTION STRAINER AND DISCHARGE RELIEF VALVE MUST BE PROVIDED ALIGNMENT UNITS ARE ACCURATELY ALIGNED AT THE FACTORY. ALIGNMENT SHOULD BE CHECKED BEFORE STARTING TO INSURE THAT IT IS STILL WITHIN TOL- ERANCES. PRESTARTING: FLUSH SUCTION PUMP BEFORE CONNECTING PUMP. PRIME AND VENT PUMP. READ INSTRUCTION MANUAL FOR DETAILS BEFORE STARTING.			ITEM NO.	3G/NN_JA118_
IDENTIFICATION FIRST ORDER E110IA			SIZE	59180
USED ON			SCALE	1/2
WEIGHT SEE NOTE 4			SHEET	1 OF 1