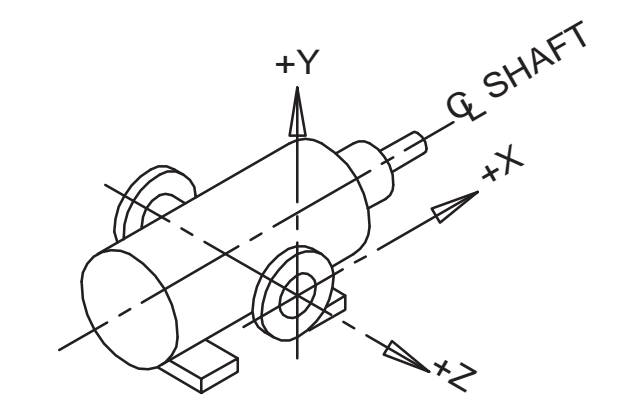
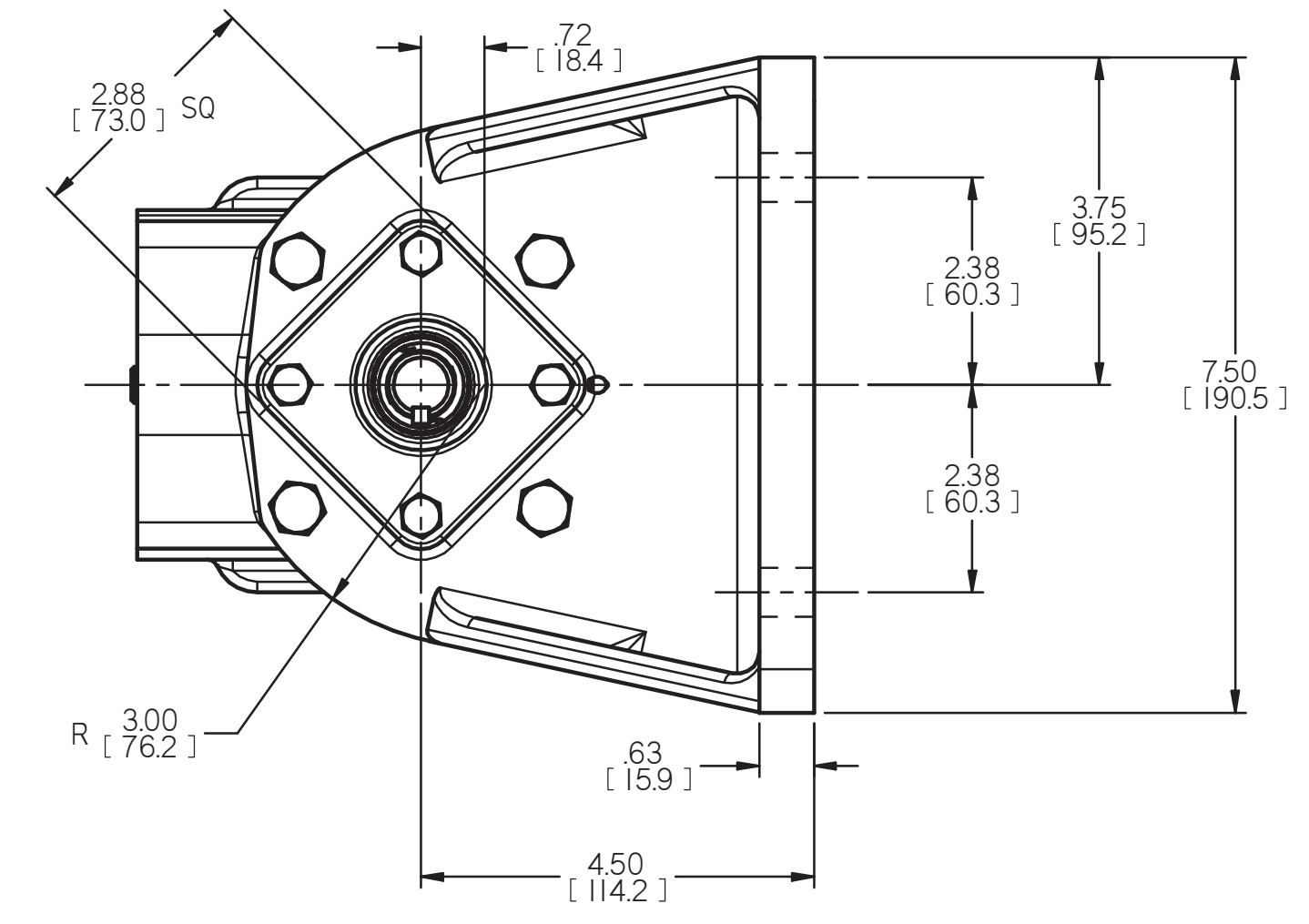
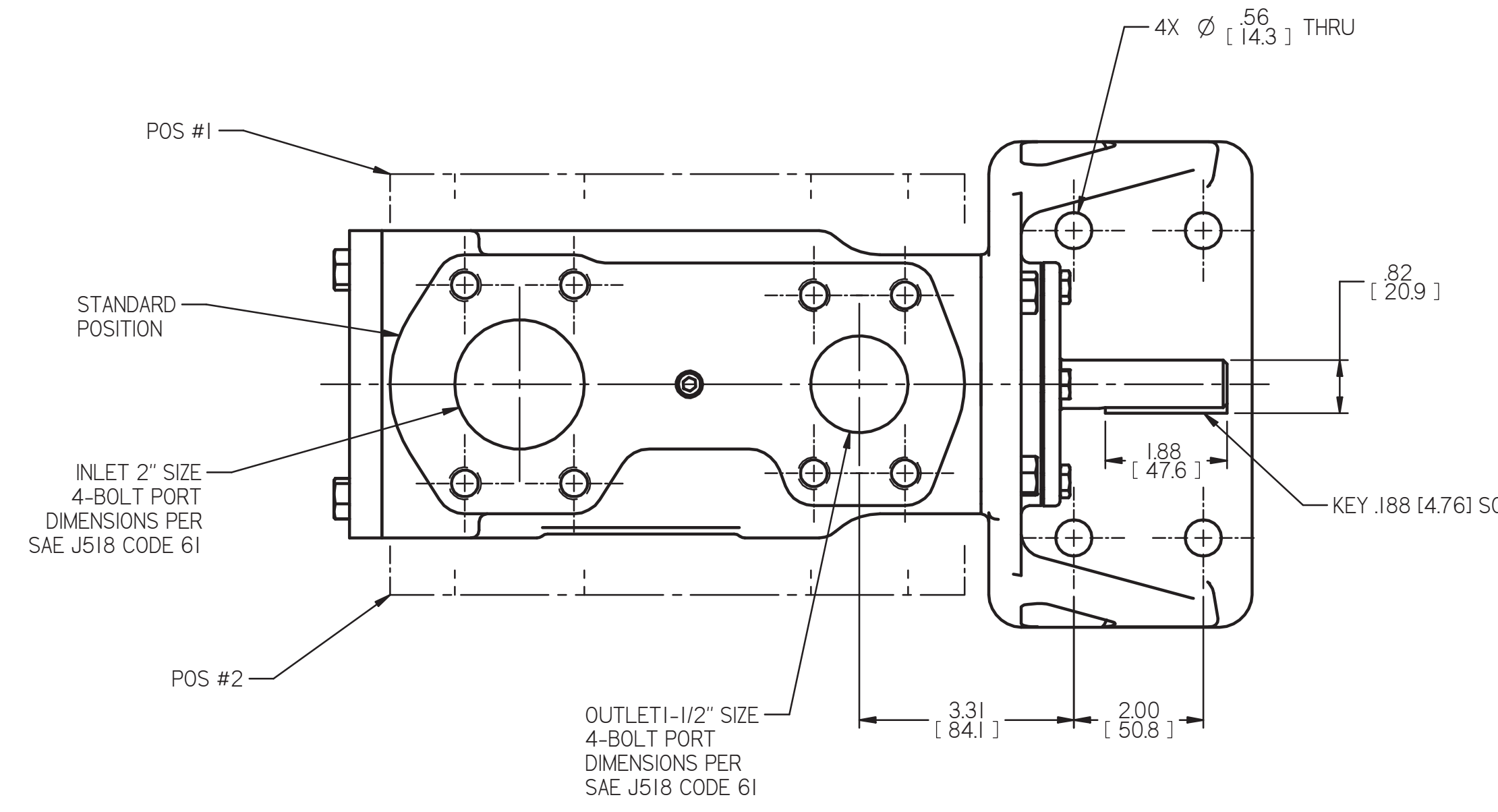


REVISION HISTORY					
CHG NO	ZONE	REV	DESCRIPTION	DATE	BY / APPROVED
13-0426	ALL	7	REDRAWN AND UPDATED ON CAD	6-16-14	ERH / CHH

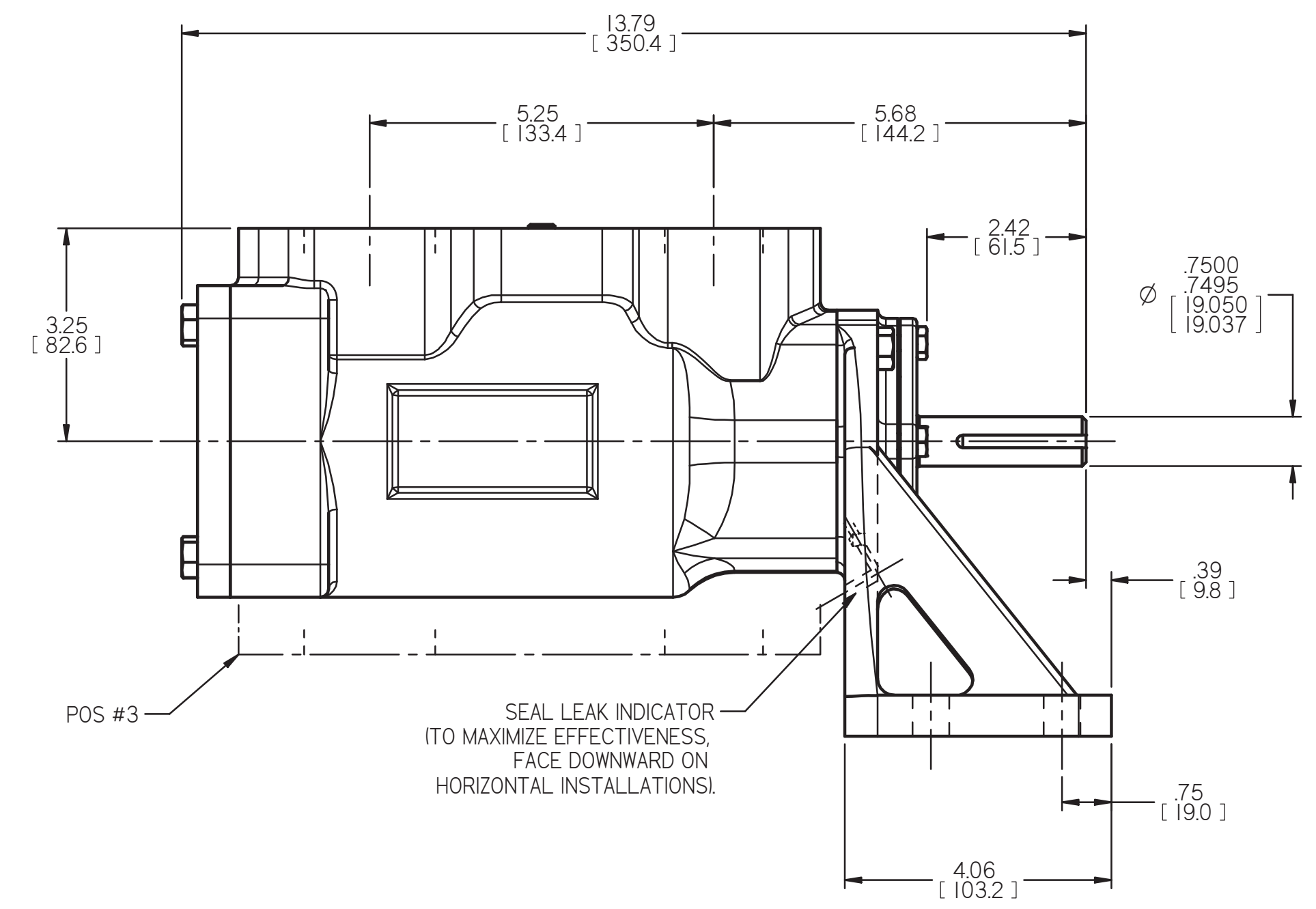


COORDINATE SYSTEM FOR MAXIMUM PUMP FORCES (F) AND MOMENTS (M)

INLET:
 FX= 37.5 LBF [169 N] MX= 62.5 LB FT [84.7 N.m]
 FY= 37.5 LBF [169 N] MY= 62.5 LB FT [84.7 N.m]
 FZ= 37.5 LBF [169 N] MZ= 62.5 LB FT [84.7 N.m]

OUTLET:
 FX= 28.1 LBF [125 N] MX= 46.9 LB FT [63.6 N.m]
 FY= 28.1 LBF [125 N] MY= 46.9 LB FT [63.6 N.m]
 FZ= 28.1 LBF [125 N] MZ= 46.9 LB FT [63.6 N.m]

FORCE AND MOMENT VALUES ARE RELATIVE TO CENTER OF INLET AND OUTLET PORT FACES.



DRAWING CERTIFICATION	
CUSTOMER NAME	-----
CUSTOMER PO NUMBER	---
CUSTOMER PART NUMBER	-
BOM NUMBER	-----
PUMP TYPE	-----
SHAFT ROTATION	-----
PORT POSITION	-----
INLET PORT OPTION	----
OUTLET PORT OPTION	---
OTHER INFORMATION	
CERTIFIED BY	-----
CERTIFIED DATE	-----
IMO ORDER NUMBER	-----
DATA REVISION NUMBER	-

- NOTES:
- UNLESS OTHERWISE SPECIFIED, ALL DIMENSIONS ARE IN INCHES. DIMENSIONS IN [] ARE MILLIMETERS.
 - PORT POSITIONS ARE RELATIVE TO THE SEAL LEAK INDICATOR FACING DOWNWARD.

DRAWN	W/LW	11-22-94		
CHECKED	MJC	12-6-94		
APPD	MJC	12-6-94		
MATERIAL				
PROCESS				
UNLESS OTHERWISE SPECIFIED ASME Y14.5M-1994. COMMENTS: SUCTION STRAINER AND DISCHARGE RELIEF VALVE MUST BE PROVIDED. ALIGNMENT: UNITS ARE ACCURATELY ALIGNED AT THE FACTORY. ALIGNMENT SHOULD BE CHECKED BEFORE STARTING TO ENSURE THAT IT IS STILL WITHIN .005 (0.13) MM. PRE-STARTING: FLUSH SUCTION PIPING BEFORE CONNECTING PUMP. PRIME AND VENT PUMP. READ INSTRUCTION MANUAL FOR DETAILS BEFORE STARTING. USED ON			TITLE	OUTLINE STANDARD
			SIZE	D
			FIRST ORDER	093881
			CAGE CODE	59180
			DWG NO	SDD18103
			SCALE	1/2
			WEIGHT	54 LBS [24kg]
			SHEET	1 OF 1