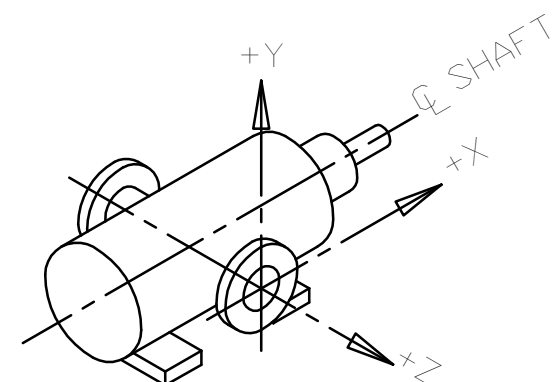


REVISION HISTORY					
CHG NO	ZONE	REV	DESCRIPTION	DATE	BY / APPROVED
16-0302	D5, D6	02	150# RF OUTLET OPTION HEIGHT 5.00	6-22-16	DMM / DMM
			WAS 5.50. 300# RF OUTLET OPTION		
			HEIGHT 5.50 WAS 5.00.		



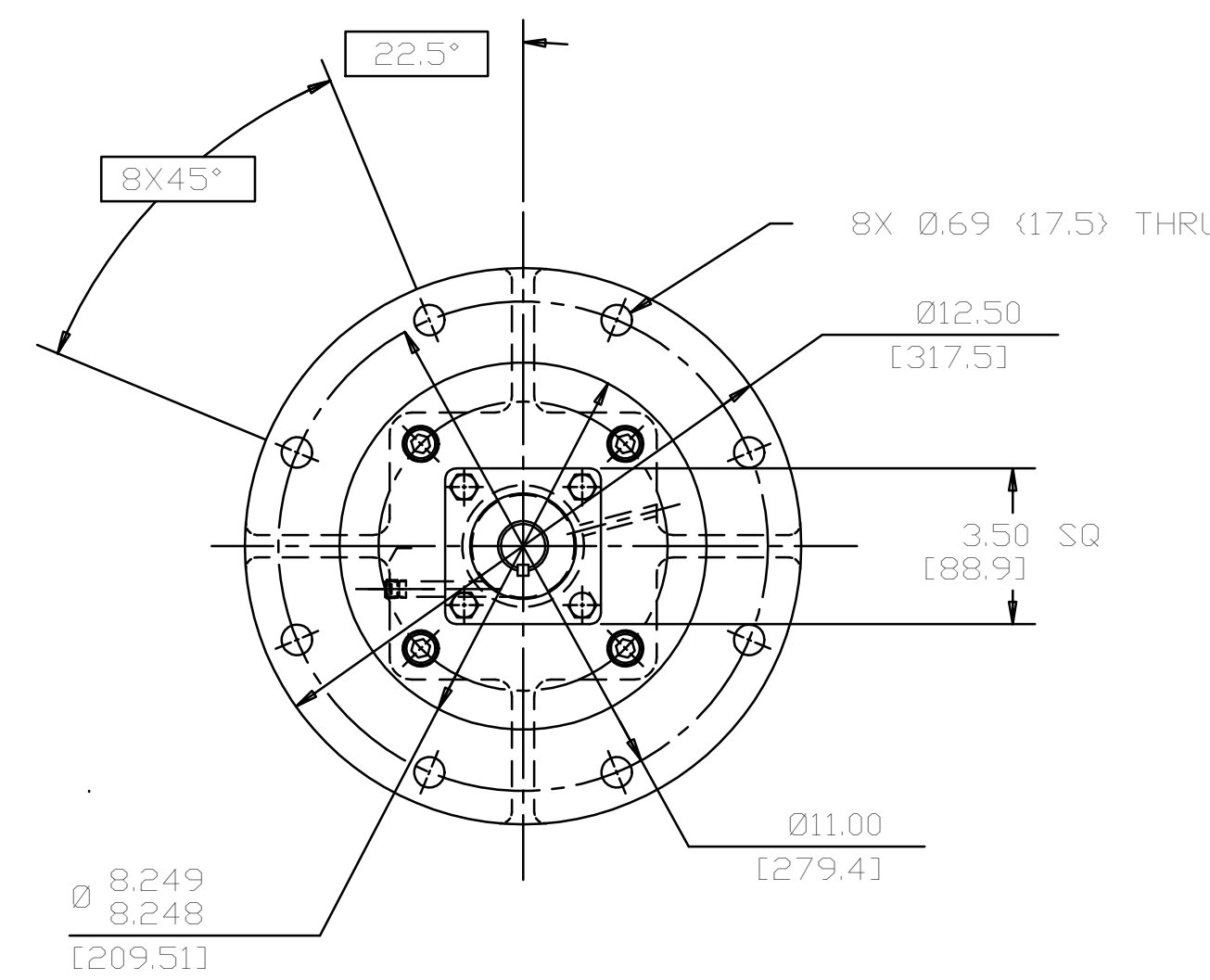
INLET:
 FX=188 LBF(836 N) MX=313 LB FT(424 N.m)
 FY=188 LBF(836 N) MY=313 LB FT(424 N.m)
 FZ=188 LBF(836 N) MZ=313 LB FT(424 N.m)

OUTLET:
 FX=113 LBF(500 N) MX=188 LB FT(254 N.m)
 FY=113 LBF(500 N) MY=188 LB FT(254 N.m)
 FZ=113 LBF(500 N) MZ=188 LB FT(254 N.m)

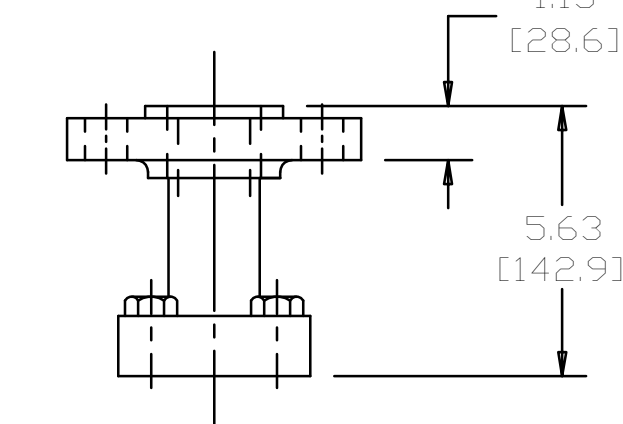
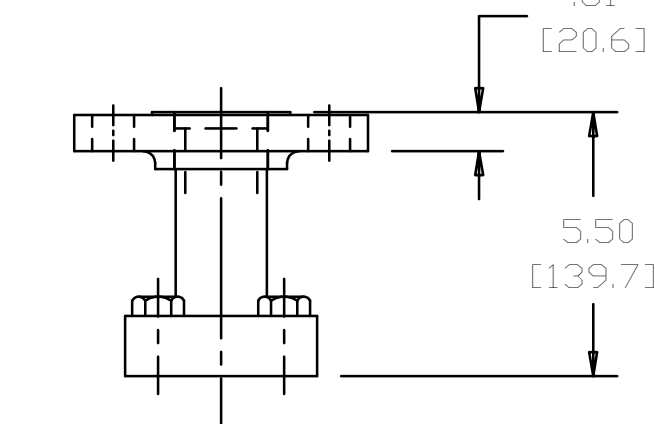
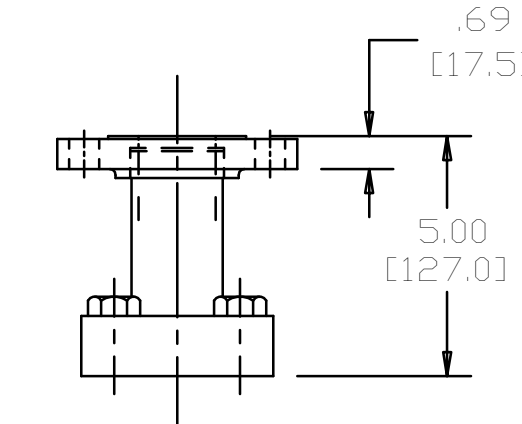
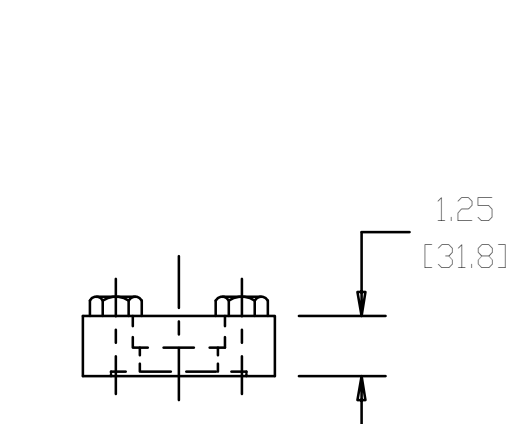
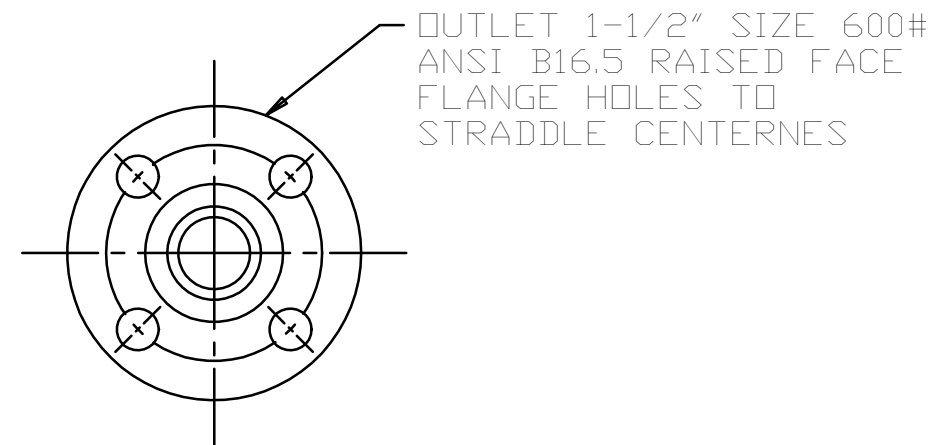
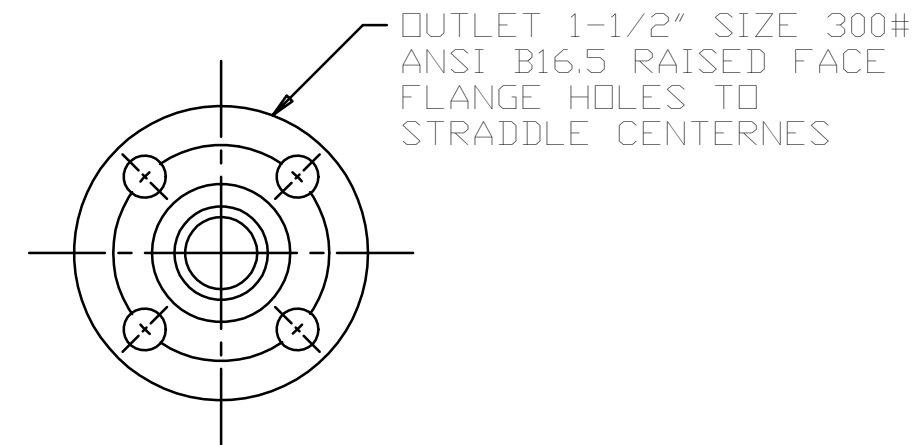
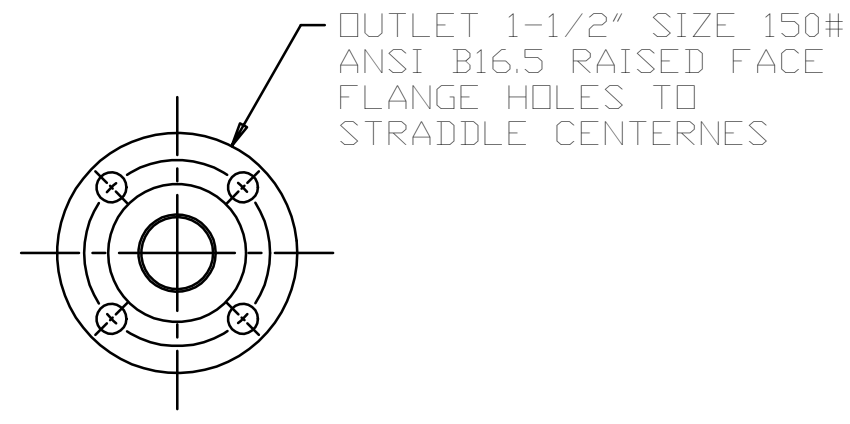
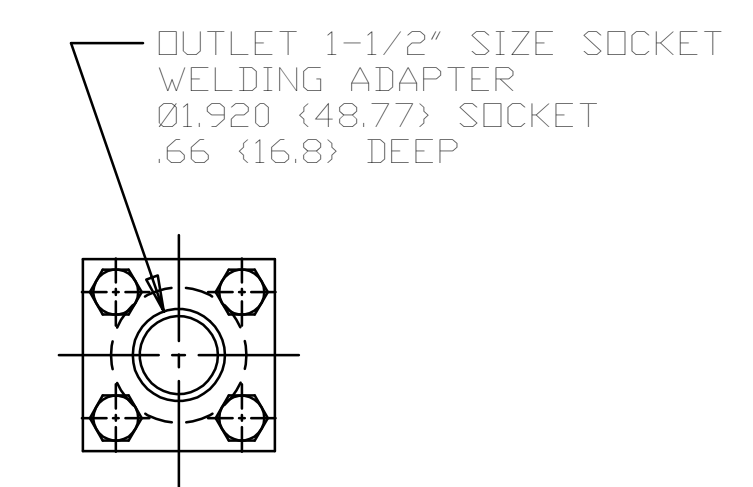
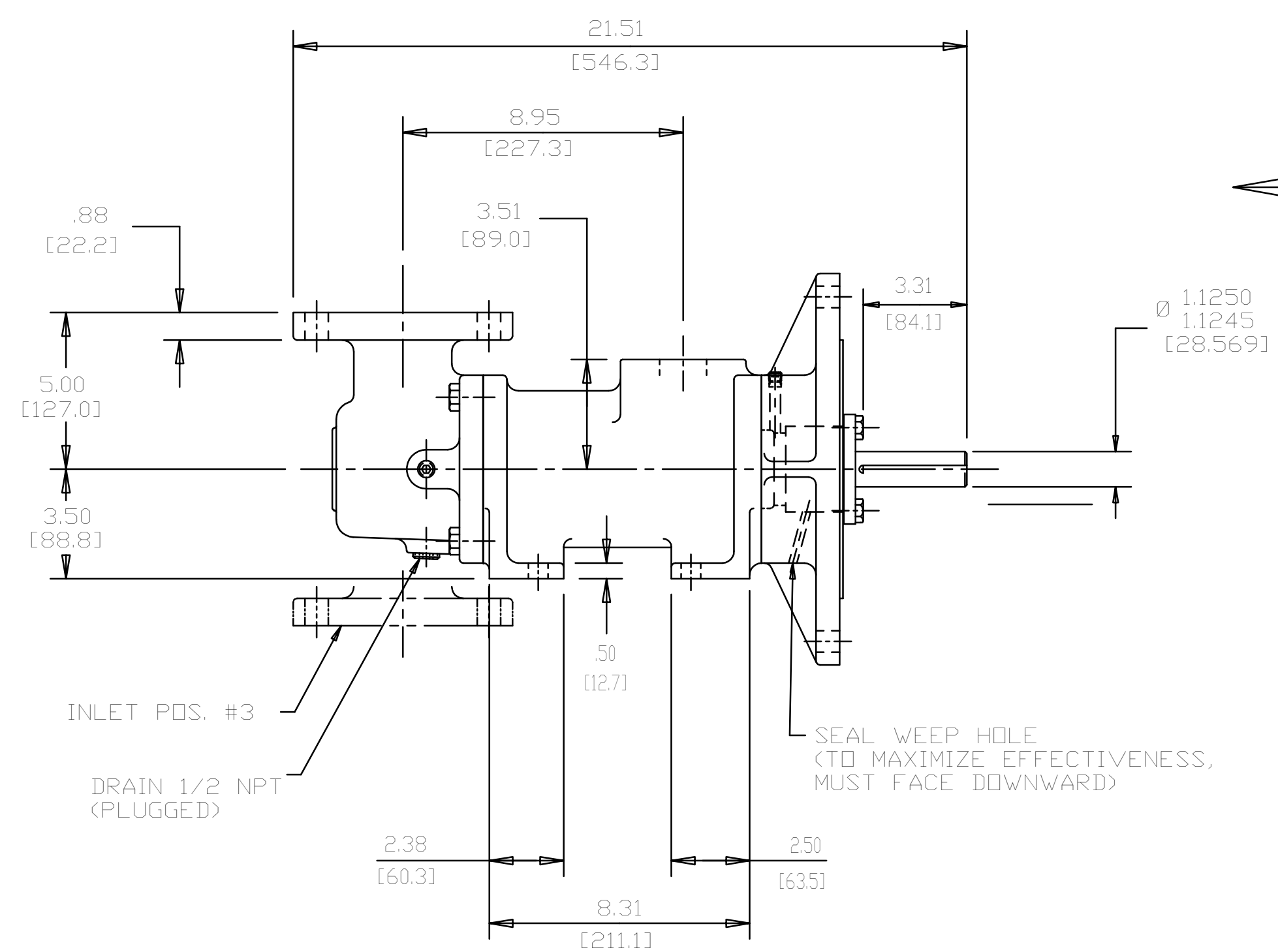
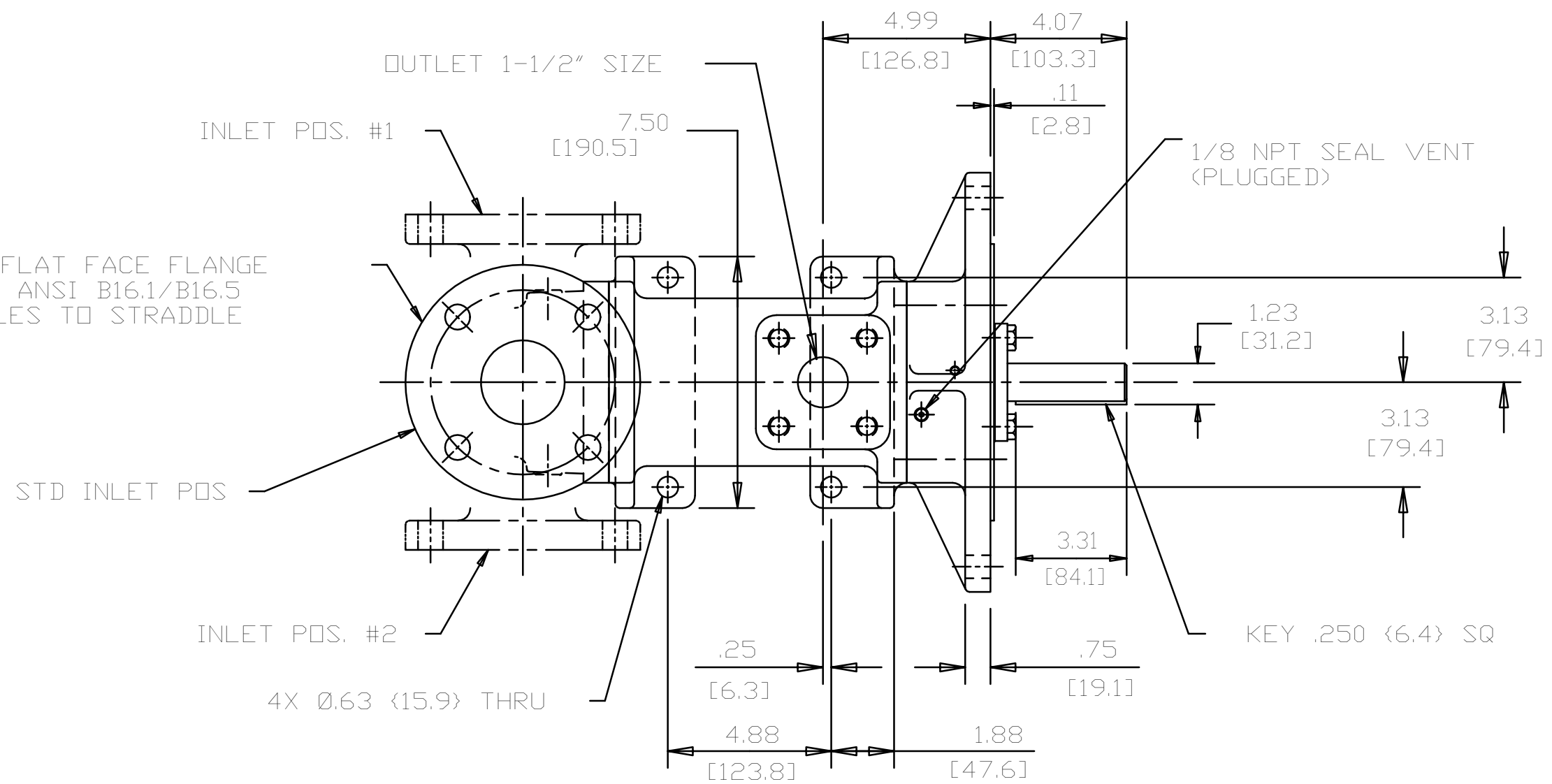
FORCE AND MOMENT VALUES ARE RELATIVE TO CENTER OF INLET AND OUTLET PORT FACES.

DRAWING CERTIFICATION	
CUSTOMER NAME	-----
CUSTOMER PO NUMBER	-----
CUSTOMER PART NUMBER	-----
BOM NUMBER	-----
PUMP TYPE	-----
SHAFT ROTATION	-----
INLET PORT POSITION	-----
OUTLET PORT ADAPTER OPTION	-----
OTHER INFORMATION	
CERTIFIED BY	-----
CERTIFIED DATE	-----
IMO ORDER NUMBER	-----
DATA REVISION NUMBER	-----

WEB ADDRESS: www.imo-pump.com		EMAIL: IMO.PUMP@COLFAXCORP.COM	
DRAWN	WLW	6-11-97	COLFAX Fluid Handling Imo Pump 1710 Airport Road PO Box 5020 Monroe, NC 28111-5020 USA
CHECKED	MJC	6-12-97	
APPD	MJC	6-12-97	
MATERIAL		PROCESS	
UNLESS OTHERWISE SPECIFIED ASME Y14.5M-1994.			
COMMENTS: SUCTION STRAINER AND DISCHARGE RELIEF VALVE MUST BE PROVIDED. ALIGNMENT: UNITS ARE ACCURATELY ALIGNED AT THE FACTORY. ALIGNMENT SHOULD BE CHECKED BEFORE STARTING TO ENSURE THAT IT IS STILL WITHIN .005 (0.127) MM. PRESTARTING: FLUSH SUCTION PIPING BEFORE CONNECTING PUMP. PRIME AND VENT PUMP. READ INSTRUCTION MANUAL FOR DETAILS BEFORE STARTING.			
TITLE	FIRST ORDER	SIZE	CAGE CODE
OUTLINE STANDARD __3D_CS_-187_	812596	D	59180
DWG NO		SHEET	
SDD19056		SEE NOTE 5	
SCALE	WEIGHT	SHEET	OF
3210/153	1/4	1	1



- NOTES:
- UNLESS OTHERWISE SPECIFIED, ALL DIMENSIONS ARE IN INCHES. DIMENSIONS IN [] ARE MILLIMETERS.
 - TO MAXIMIZE SEAL LIFE, SEAL VENT MUST BE ORIENTED UPWARD (12 O'CLOCK) WHEN PUMP IS INSTALLED HORIZONTALLY. THIS IS NORMAL VENT ORIENTATION WHEN PUMP FEET ARE ORIENTED DOWNWARD. SEAL VENT ORIENTATION IS NOT CRITICAL WHEN PUMP IS INSTALLED WITH SHAFT VERTICALLY UPWARD.
 - PORT, FOOT, AND SEAL VENT ORIENTATIONS ARE SUPPLIED AS SHOWN ON DRAWING UNLESS OTHERWISE SPECIFIED.
 - ALTERNATE INLET PORT POSITIONS ARE PROVIDED IF SPECIFIED ON ORDER. AVAILABLE POSITIONS ARE: STANDARD, POSITION #1, POSITION #2 OR POSITION #3. ALL INLET PORT POSITIONS ARE RELATIVE TO OUTLET PORT.
 - ESTIMATED WEIGHT (WITHOUT PORT ADAPTERS) 130 LBS (59.0 kg).



INLET 2-1/2" SIZE 150# FLAT FACE FLANGE WILL MATE TO 125#/150# ANSI B16.1/B16.5 RAISED FACE FLANGE HOLES TO STRADDLE CENTERNES