

# 3L SERIES PUMP

## THREE-SCREW PUMPS STANDARD PRODUCT SPECIFICATIONS

### COLFAX FLUID HANDLING INDUSTRIAL SOLUTIONS

Series 3L Imo pumps are intended for high pressure service on fluids with viscosity from 32ssu to 7500ssu. The primary application for this product line is forced lubrication for wet screw compressors and turbo expanders.

These pumps are hydraulically balanced in both the axial and radial directions which eliminates bearing loads due to differential pressure. The single grease packed ball bearing is external to the liquid pumped and does not rely on the lubrication qualities of the pumped liquid. The single mechanical seal is exposed only to inlet pressure. Very low airborne noise levels are normal for Imo three screw positive displacement pumps as are high operating efficiencies and non-pulsating delivered flow.



E3LB-187 SHOWN

### PRODUCT SPECIFICATIONS

Casing	Cast steel.
Rotor housing	Pearlitic gray iron.
Power rotor	Alloy steel, nitride hardened and ground.
Idler rotors	Pearlitic gray iron, hardened and ground.
Gaskets	All static seals are fluorocarbon elastomer O-rings.
Seal & bearing	Two balanced type mechanical seals with carbon rotation face and carbide stationary face. The design includes a single ball bearing is sealed and grease packed.
Accessories	Built to order pump/driver assemblies are available with baseplates, ANSI RF spool pieces.
Outlet pressure	500psi maximum differential pressure.
Inlet pressure	E3L: 1100psiG maximum. AE3L: 1500psiG maximum / 700psiG minimum.
Viscosity	32ssu minimum 7500ssu maximum

## 3L SERIES PUMP SPECIFICATIONS CONTINUED

Temperature 250°F maximum.

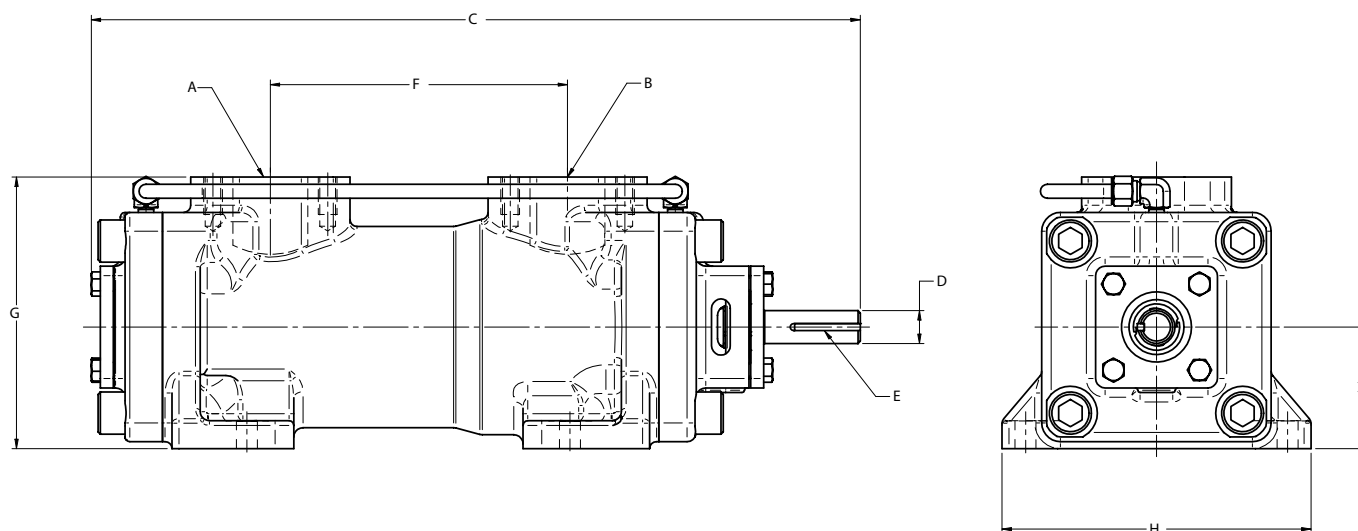
Speed To 4400rpm -187 rotor size pumps.  
To 4100rpm -200 rotor size pumps.  
To 3600rpm -250 rotor size pumps.

Drive Direct only.

Rotation Clockwise only.

Mounting Foot mount for any orientation. Flange mounting optional for vertical applications.

Filtration Inlet strainers are required to keep contaminants and abrasives out of the pump. They must be selected in consultation with the strainer vendor to prevent pump starvation. Normally, 60 mesh (0.01 inch - 238 micron) for light and 1/8 - 3/16 inch (3 - 5mm) openings for heavy oils are recommended. Return line filters for closed loop systems also recommended.



Size	A		B		C		D		E		F		G		H		I	
	Inch	MM	Inch	MM	Inch	MM	Inch	MM	Inch	MM	Inch	MM	Inch	MM	Inch	MM	Inch	MM
<b>187 / 200</b>	2	50.8	2	50.8	20.54	521.7	0.875	22.22	.187 sq.	4.75 sq	7.94	201.67	7.26	184.4	7	177.8	3.25	82.5
<b>250</b>	3	76.2	3	76.2	26.04	661.4	1.125	28.57	.250 sq	6.35 sq	10	254	10	254	10.5	266.7	4.74	120.5

For individual pump performance, refer to the Colfax Selector at <http://cfx-selector.com>  
Data Nominal / Request certified drawing for construction

**Colfax Fluid Handling**  
1710 Airport Road  
Monroe, NC 28110-5020  
Tel: +1.704.289.6511  
Tol: +1.877.853.7867

Colfax Fluid Handling Product & Services

ALLWEILER® HOUTTUIN™ IMO® WARREN®

COLFAX, ALLWEILER, HOUTTUIN, IMO, and WARREN are registered trademarks of the Colfax Corporation or its subsidiaries in the U.S. and/or other countries. © 2013 Colfax Corporation. All rights reserved. GB-CFH007-3L-06/14

**COLFAX**®  
Fluid Handling

REDEFINING WHAT'S POSSIBLE