

8

7

6

5

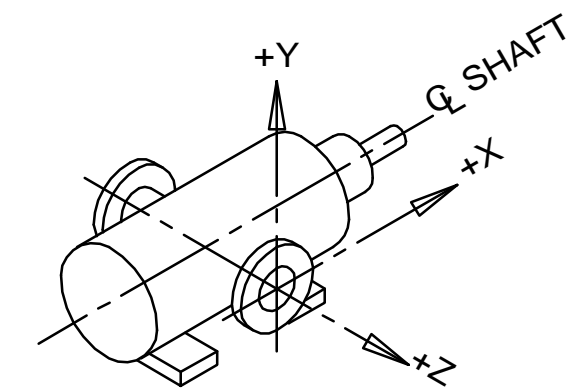
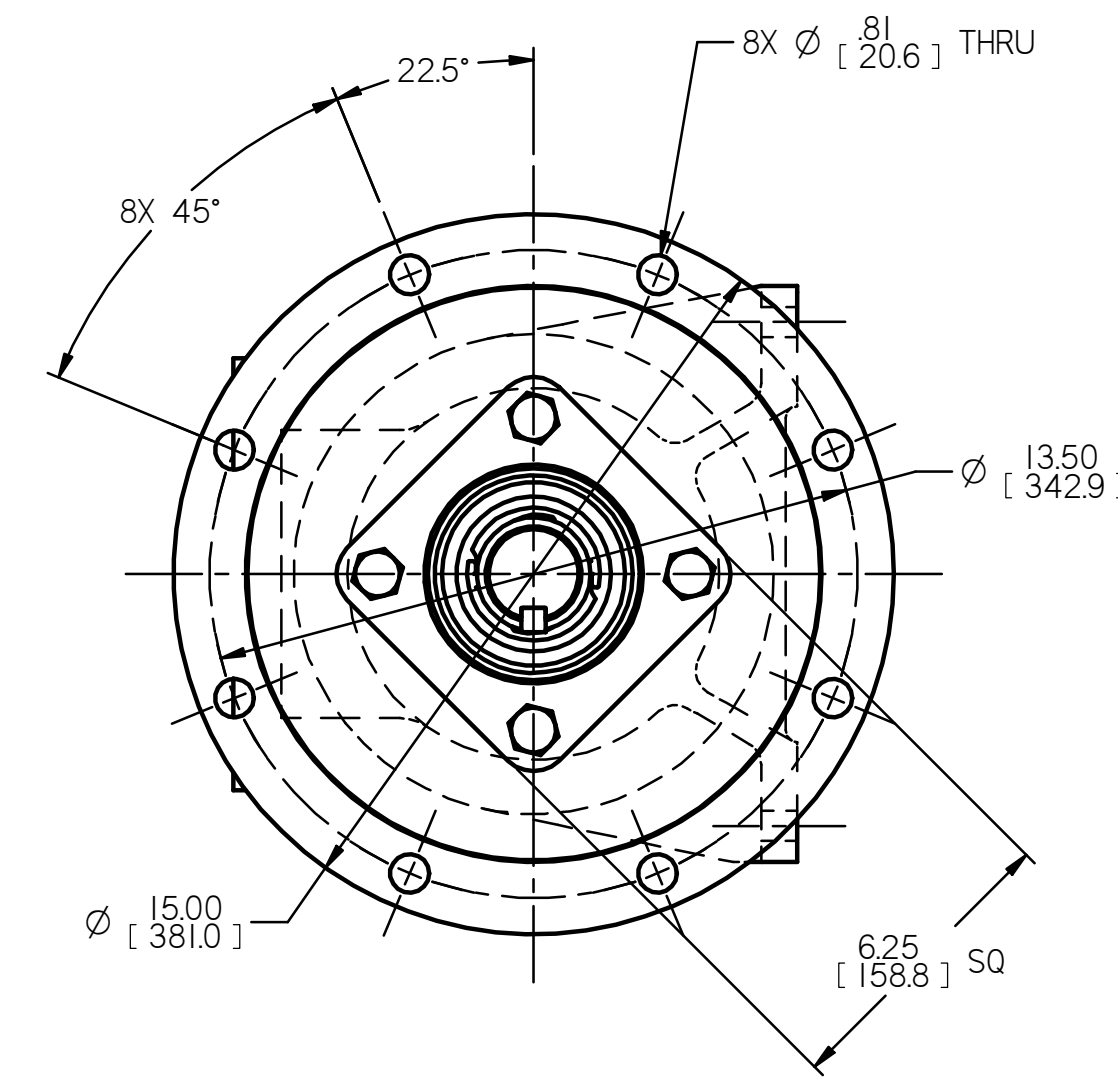
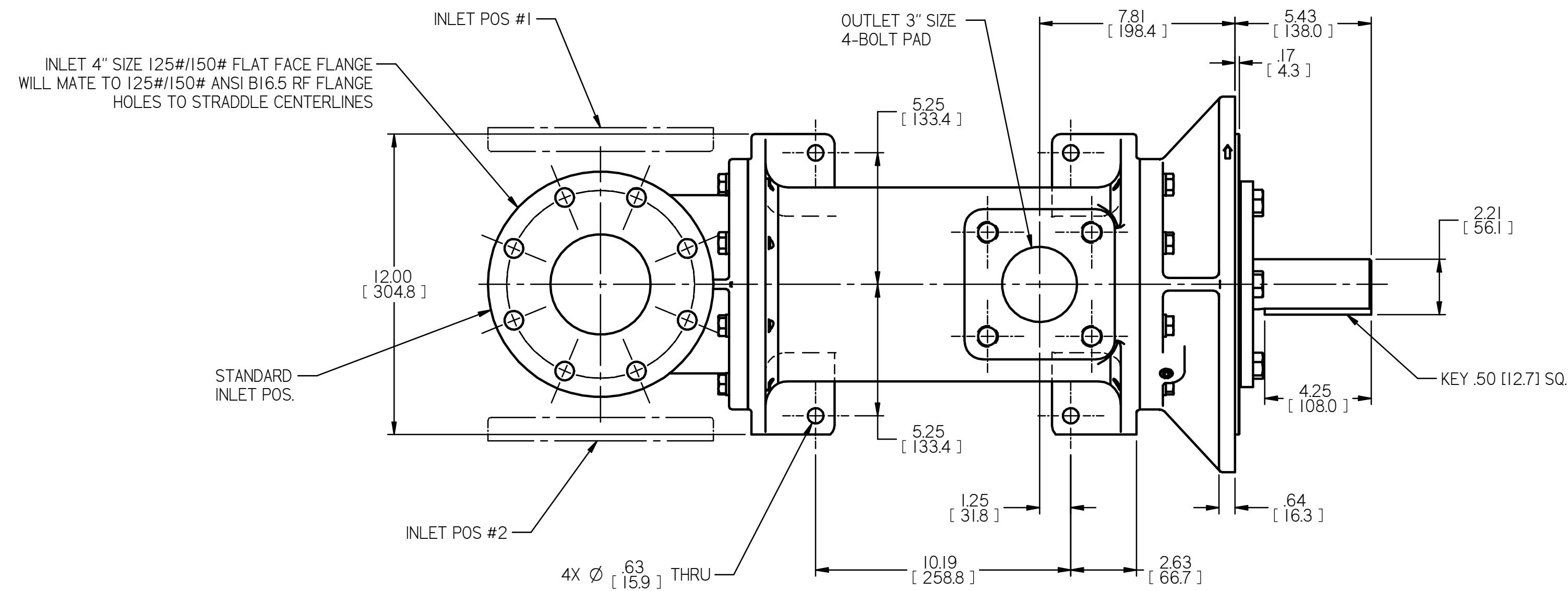
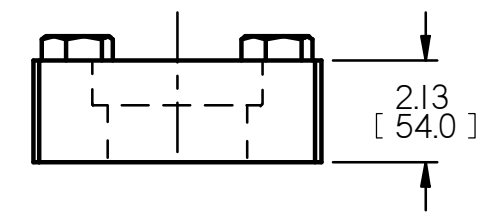
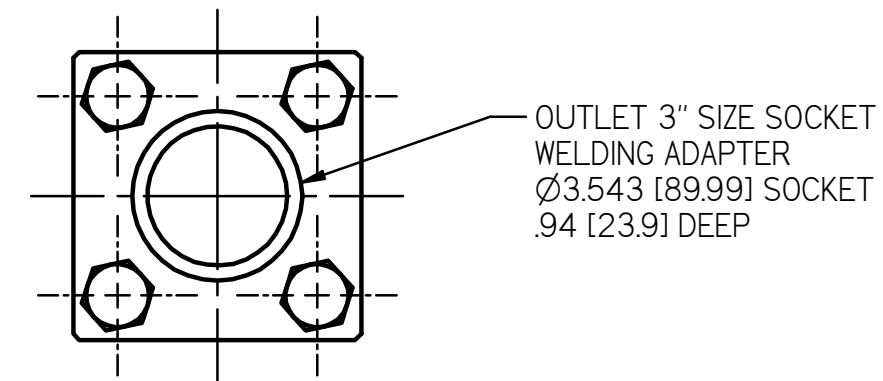
4

3

2

1

| REVISION HISTORY | | | | | |
|------------------|------|-----|-------------------------------|---------|---------------|
| CHG NO | ZONE | REV | DESCRIPTION | DATE | BY / APPROVED |
| 17-0383 | ALL | 01 | REDRAWN AND UPDATED ON CAD | 8-24-17 | ERH / ERH |
| 17-0383 | A1,2 | 01 | CHANGE TITLE TO _G3D_CS_-312_ | 8-24-17 | ERH / ERH |



COORDINATE SYSTEM FOR MAXIMUM PUMP FORCES (F) AND MOMENTS (M)

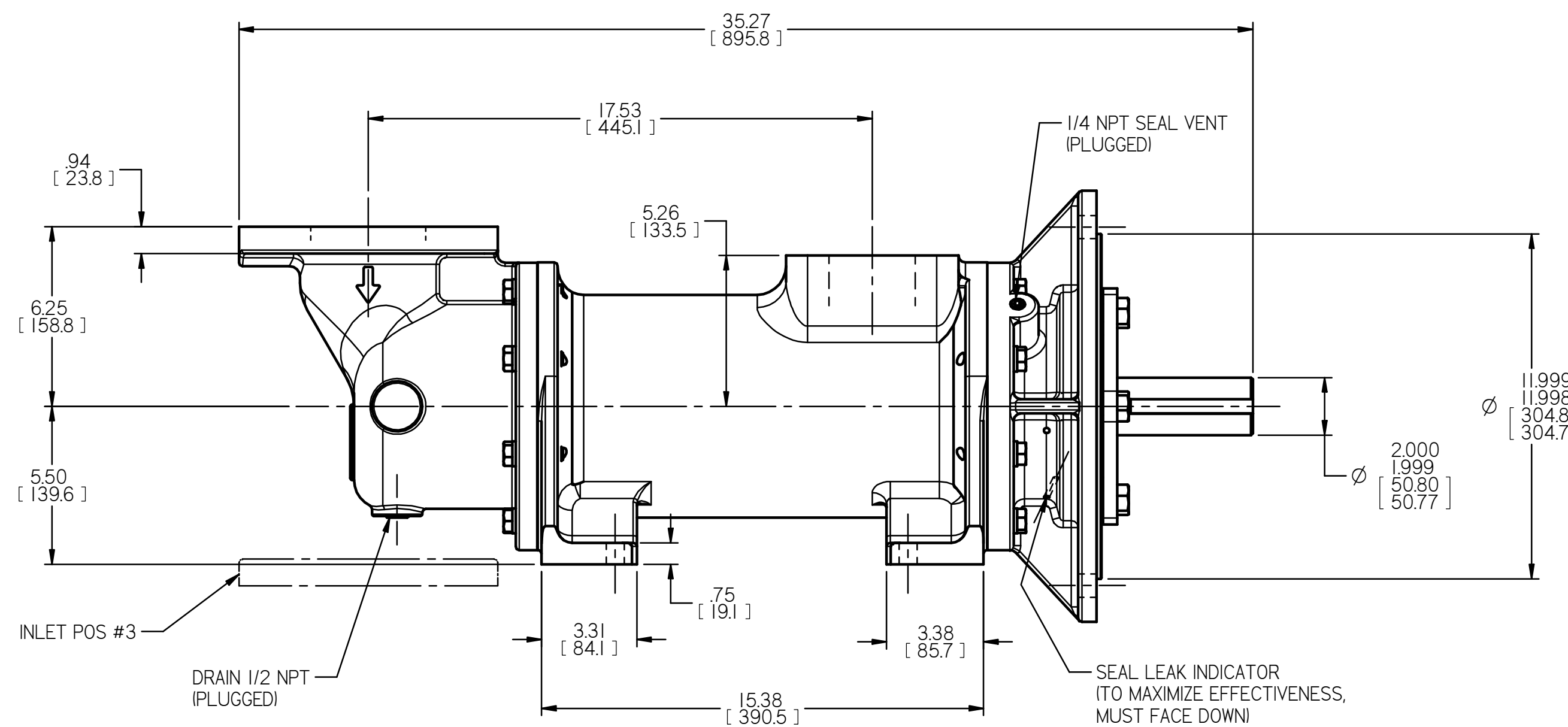
INLET:
FX= 300 LBF 1330 N MX= 500 LB FT 678 N.m
FY= 300 LBF 1330 N MY= 500 LB FT 678 N.m
FZ= 300 LBF 1330 N MZ= 500 LB FT 678 N.m

OUTLET:
FX= 225 LBF 1000 N MX= 375 LB FT 508 N.m
FY= 225 LBF 1000 N MY= 375 LB FT 508 N.m
FZ= 225 LBF 1000 N MZ= 375 LB FT 508 N.m

FORCE AND MOMENT VALUES ARE RELATIVE TO CENTER OF INLET AND OUTLET PORT FACES.

NOTES:

- UNLESS OTHERWISE SPECIFIED, ALL DIMENSIONS ARE IN INCHES. DIMENSIONS IN [] ARE MILLIMETERS.
- TO MAXIMIZE SEAL LIFE, SEAL VENT MUST BE ORIENTED UPWARD (12 O'CLOCK) WHEN PUMP IS INSTALLED HORIZONTALLY. THIS IS NORMAL VENT ORIENTATION WHEN PUMP FEET ARE ORIENTED DOWNWARD. SEAL VENT ORIENTATION IS NOT CRITICAL WHEN PUMP IS INSTALLED WITH SHAFT VERTICALLY UPWARD.
- PORT, FOOT, AND SEAL VENT ORIENTATIONS ARE SUPPLIED AS SHOWN ON DRAWING UNLESS OTHERWISE SPECIFIED.
- ESTIMATED WEIGHT IS WITHOUT PORT ADAPTERS



D

D

C

C

B

B

A

A

| | | | | |
|---|-----|------------------|--|---------------------------|
| DRAWN | DMM | 11-30-00 | COLFAX Fluid Handling Imo Pump 1710 Airport Road PO Box 5020 Monroe, NC 28111-5020 USA | |
| CHECKED | DMM | 12-6-00 | | |
| APPD | DMM | 12-6-00 | | |
| MATERIAL PROCESS UNLESS OTHERWISE SPECIFIED ASME Y14.5M-1994. COMMENTS: SUCTION STRAINER AND DISCHARGE RELIEF VALVE MUST BE PROVIDED. ALIGNMENT: UNITS ARE ACCURATELY ALIGNED AT THE FACTORY. ALIGNMENT SHOULD BE CHECKED BEFORE STARTING TO ENSURE THAT IT IS STILL WITHIN .005 (0.13) MM. PRE-STARTING: FLUSH SUCTION PIPING BEFORE CONNECTING PUMP. PRIME AND VENT PUMP. READ INSTRUCTION MANUAL FOR DETAILS BEFORE STARTING. | | | TITLE OUTLINE STANDARD _G3D_CS_-312_ | |
| FIRST ORDER EB112A | | SIZE D | CAGE CODE 59180 | DWG NO SDD20057 |
| USED ON 3220/159 | | SCALE 1/4 | WEIGHT 318 LBS [144kg] | SHEET 1 OF 1 |

8

7

6

5

4

3

2

1