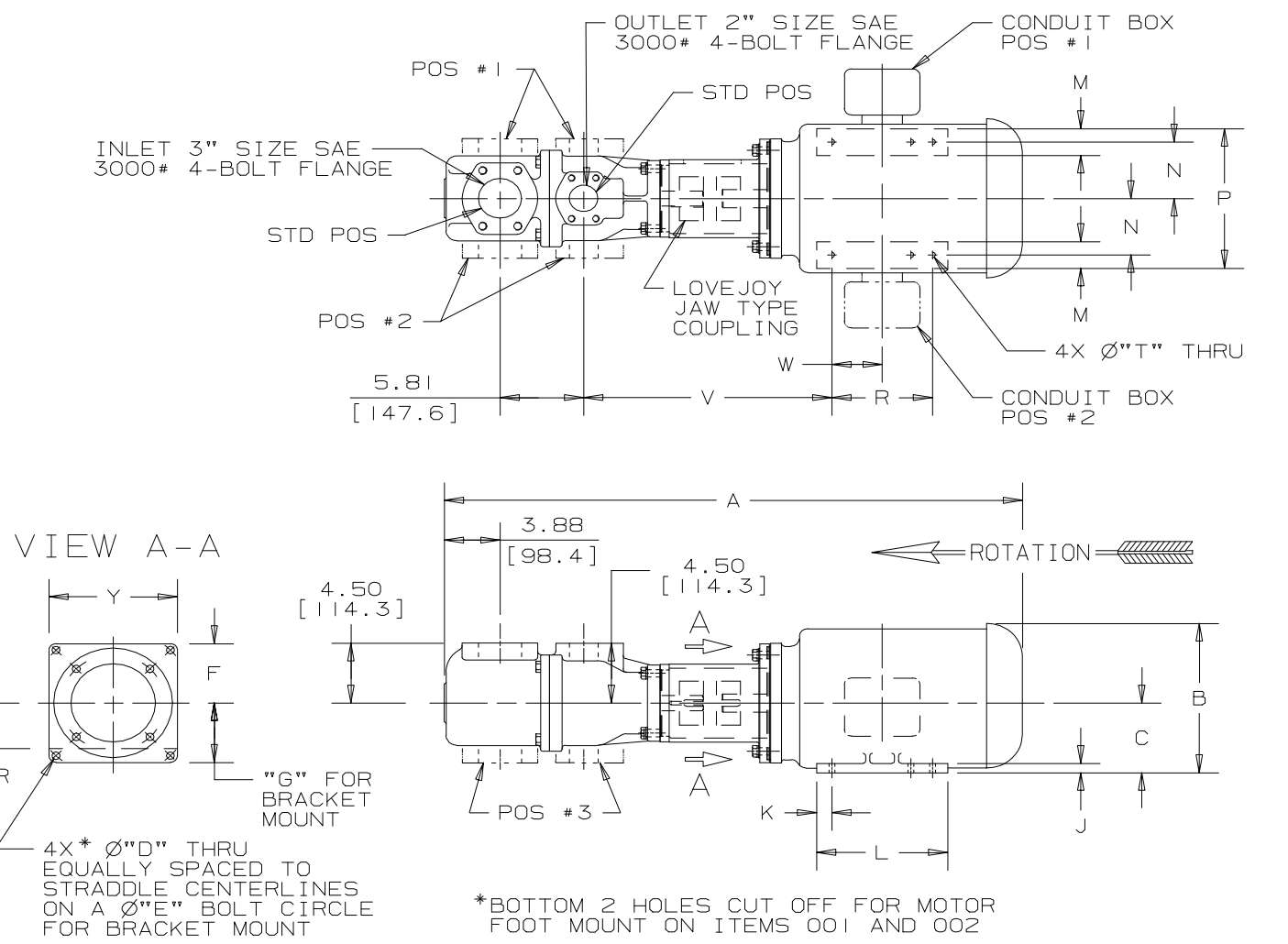
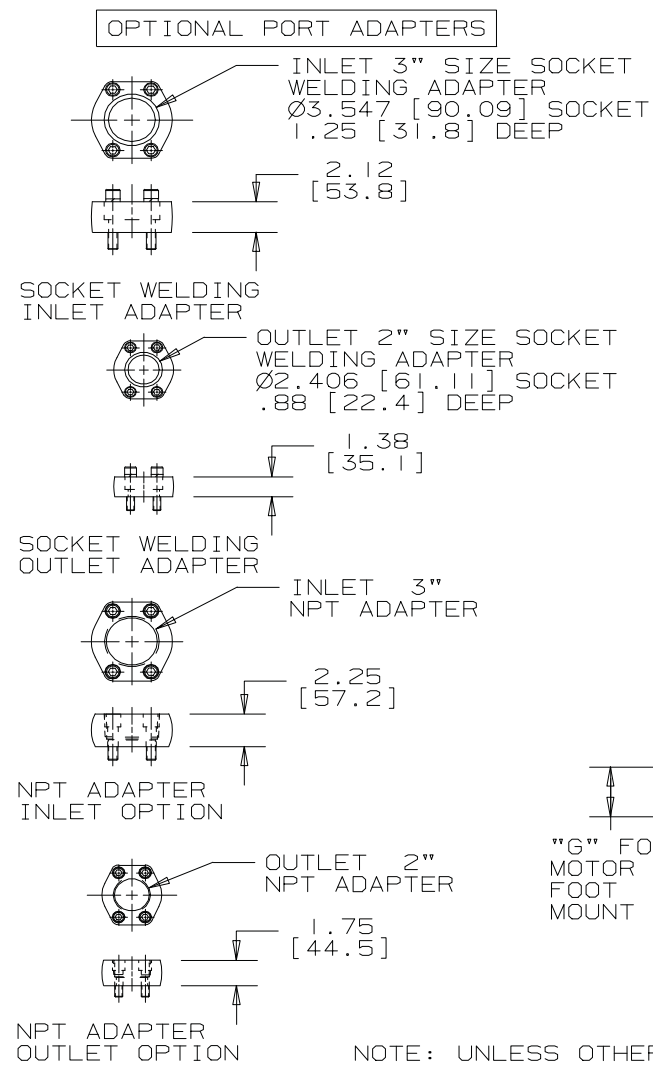


✓	ITEM NO.	NEMA MOTOR FRAME	UNITS	A	B	C	D	E	F	G	G	J	K	L	M	N	P	R	T	V	W	Y	APPROX. UNIT WT. LB / [kg]	COUPLING MODEL NO.	
										MTR. FT. MOUNT	BRACKET MOUNT														
	001	56C	INCHES [mm]	33.6 [854]	7.1 [179]	3.50 [89]	0.69 [18]	11.25 [286]	4.5 [114]	3.4 [87]	4.5 [114]	---	0.13 [3]	0.50 [13]	4.0 [102]	1.75 [44]	2.44 [62]	6.5 [165]	3.00 [76]	0.34 [9]	14.2 [361]	1.5 [38]	8.9 [227]	136 [62]	L150
	002	143/145TC	INCHES [mm]	32.6 / 33.1 [829 / 842]	7.3 [184]	3.50 [89]	0.69 [18]	11.25 [286]	4.5 [114]	3.4 [87]	4.5 [114]	---	0.40 [10]	0.50 [13]	6.0 [152]	1.25 [32]	2.75 [70]	7.0 [178]	4.00 / 5.00 [102 / 127]	0.34 [9]	14.6 [370]	2.0 / 2.5 [51 / 64]	8.9 [227]	171 [78]	L150
	003	182/184TC	INCHES [mm]	37.1 / 37.6 [943 / 956]	9.9 [251]	4.50 [114]	0.56 [14]	11.25 [286]	4.5 [114]	4.5 [114]	4.5 [114]	---	0.50 [13]	1.50 [38]	8.5 [216]	1.80 [46]	3.75 [95]	9.0 [229]	4.5 / 5.50 [114 / 140]	0.41 [10]	16.4 [416]	2.3 / 2.8 [57 / 70]	8.9 [227]	200 [91]	L110
	004	213/215TC	INCHES [mm]	39.5 / 40.2 [1002 / 1021]	11.3 [286]	5.25 [133]	0.56 [14]	11.25 [286]	4.5 [114]	4.5 [114]	4.5 [114]	---	0.70 [18]	1.06 [27]	9.1 [232]	2.00 [51]	4.25 [108]	10.5 [267]	5.50 / 7.00 [140 / 178]	0.41 [10]	17.3 [438]	2.8 / 3.5 [70 / 89]	8.9 [227]	255 [116]	L110
	005	254/256TC	INCHES [mm]	42.8 / 43.7 [1087 / 1110]	13.4 [340]	6.25 [159]	0.56 [14]	11.25 [286]	4.5 [114]	4.5 [114]	4.5 [114]	---	0.80 [20]	1.25 [32]	12.5 [318]	2.65 [67]	5.00 [127]	12.5 [318]	8.25 / 10.00 [210 / 254]	0.53 [13]	17.8 [451]	4.1 / 5.0 [105 / 127]	8.9 [227]	345 [157]	L110
	006	284/286TSC	INCHES [mm]	44.1 / 44.9 [1121 / 1140]	14.8 [376]	7.0 [178]	0.56 [14]	13.0 [330]	5.6 [143]	5.6 [143]	5.6 [143]	---	0.80 [20]	1.50 [38]	14.0 [356]	2.80 [71]	5.50 [140]	14.0 [356]	9.50 / 11.00 [241 / 279]	0.53 [13]	17.1 [435]	4.8 / 5.5 [121 / 140]	11.3 [286]	459 [209]	L150
	007	324/326TSC	INCHES [mm]	47.0 / 47.8 [1194 / 1213]	16.6 [422]	8.0 [203]	0.69 [18]	16.0 [406]	7.0 [177]	7.0 [177]	7.0 [177]	---	0.90 [23]	1.75 [44]	15.5 [394]	3.2 [81]	6.25 [159]	16.0 [406]	10.50 / 12.00 [267 / 305]	0.66 [17]	18.1 [460]	5.3 / 6.0 [133 / 152]	13.9 [354]	553 [251]	L150
	008	364/365TSC	INCHES [mm]	49.1 / 50.1 [1248 / 1273]	18.5 [470]	9.0 [229]	0.69 [18]	16.0 [406]	7.0 [177]	7.0 [177]	7.0 [177]	---	1.00 [25]	1.98 [50]	16.2 [411]	4.0 [102]	7.00 [178]	18.0 [457]	11.25 / 12.25 [286 / 311]	0.66 [17]	18.8 [477]	5.6 / 6.1 [143 / 155]	13.9 [354]	820 [373]	L150

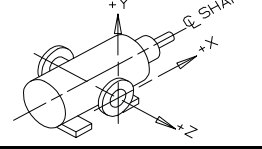


NOTE: UNLESS OTHERWISE SPECIFIED, ALL DIMENSIONS ARE IN INCHES. DIMENSIONS IN [] ARE MILLIMETERS.

DRAWING CERTIFICATION

CUSTOMER NAME -----
 CUSTOMER PO NUMBER ----
 CUSTOMER PART NUMBER --
 UNIT BILL OF MAT'L NO. --
 PUMP TYPE -----
 ITEM NUMBER -----
 MOUNT TYPE -----
 SHAFT ROTATION -----
 INLET PORT POSITION ---
 OUTLET PORT POSITION --
 INLET ADAPTER OPTION --
 OUTLET ADAPTER OPTION -
 MOTOR MANUFACTURER ----
 MOTOR TYPE -----
 FRAME SIZE -----
 POWER -----
 ROTATING SPEED -----
 PHASES -----
 FREQUENCY -----
 VOLTAGE -----
 MOTOR WEIGHT -----
 CONDUIT BOX POSITION --
 MOTOR INSTALLED BY ----
 CERTIFIED BY -----
 CERTIFICATION DATE ----
 IMO ORDER NUMBER -----
 CERTIFICATION REV. NO. --
 NOTES:

MAX. ALLOWABLE FORCES & MOMENTS ON PORTS



- COORDINATE SYSTEM FOR MAXIMUM PORT FORCES (F) AND MOMENTS (M).
 - FORCE AND MOMENT VALUES ARE RELATIVE TO CENTER OF INLET AND OUTLET PORT FACES.

	FORCE	LBF	[N]	MOMENT	LB-FT	[N-m]
INLET	FX	56.3	[250]	MX	93.8	[127]
	FY	56.3	[250]	MY	93.8	[127]
	FZ	56.3	[250]	MZ	93.8	[127]
OUTLET	FX	37.5	[169]	MX	62.5	[84.7]
	FY	37.5	[169]	MY	62.5	[84.7]
	FZ	37.5	[169]	MZ	62.5	[84.7]

- NOTES ---
- THIS IS A STANDARD PRE-ENGINEERED UNIT OUTLINE. ANY CHANGES OUTSIDE THE CERTIFICATION BLOCK WILL REQUIRE A NEW DRAWING ASSIGNMENT.
 - APPROXIMATE WEIGHT DOES NOT INCLUDE OPTIONAL ADAPTERS.
 - ALTERNATE PORT POSITIONS ARE PROVIDED IF SPECIFIED ON ORDER. AVAILABLE POSITIONS ARE STD, #1, #2 & #3.
 - DRIVER DIMENSIONS MAY VARY WITH TYPE AND MAKE OF DRIVER.
 - STANDARD SHAFT ROTATION IS CLOCKWISE WHEN FACING COUPLING END OF PUMP.
 - REVIEW GENERAL INSTRUCTION MANUAL FOR ALIGNMENT, PIPING, INLET STRAINER, DISCHARGE RELIEF VALVE, SEAL, VENT, ETC., CONSIDERATIONS BEFORE INSTALLING AND OPERATING UNIT.

REV. NO.	ECR NO.	DATE	APPROVED BY
1	01-0287	6/21/01	D. Mashburn

DRAWN BY	DATE	APPROVED BY	DATE
D. Mashburn	5/10/01	M. Vena	5/10/01

CHECKED BY	DATE	FIRST ORDER NUMBER
M. Vena	5/10/01	EB122A



**STANDARD UNIT OUTLINE DRAWING
 STEEL CASE FLANGE MOUNT 3E187/200**

CAGE CODE	DWG SIZE	SHEET	DRAWING NUMBER
59180	B	1 of 1	SDD20079