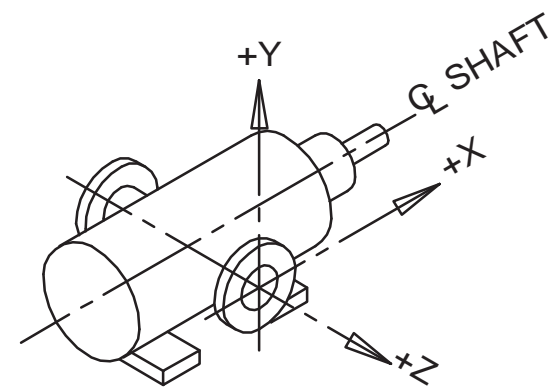
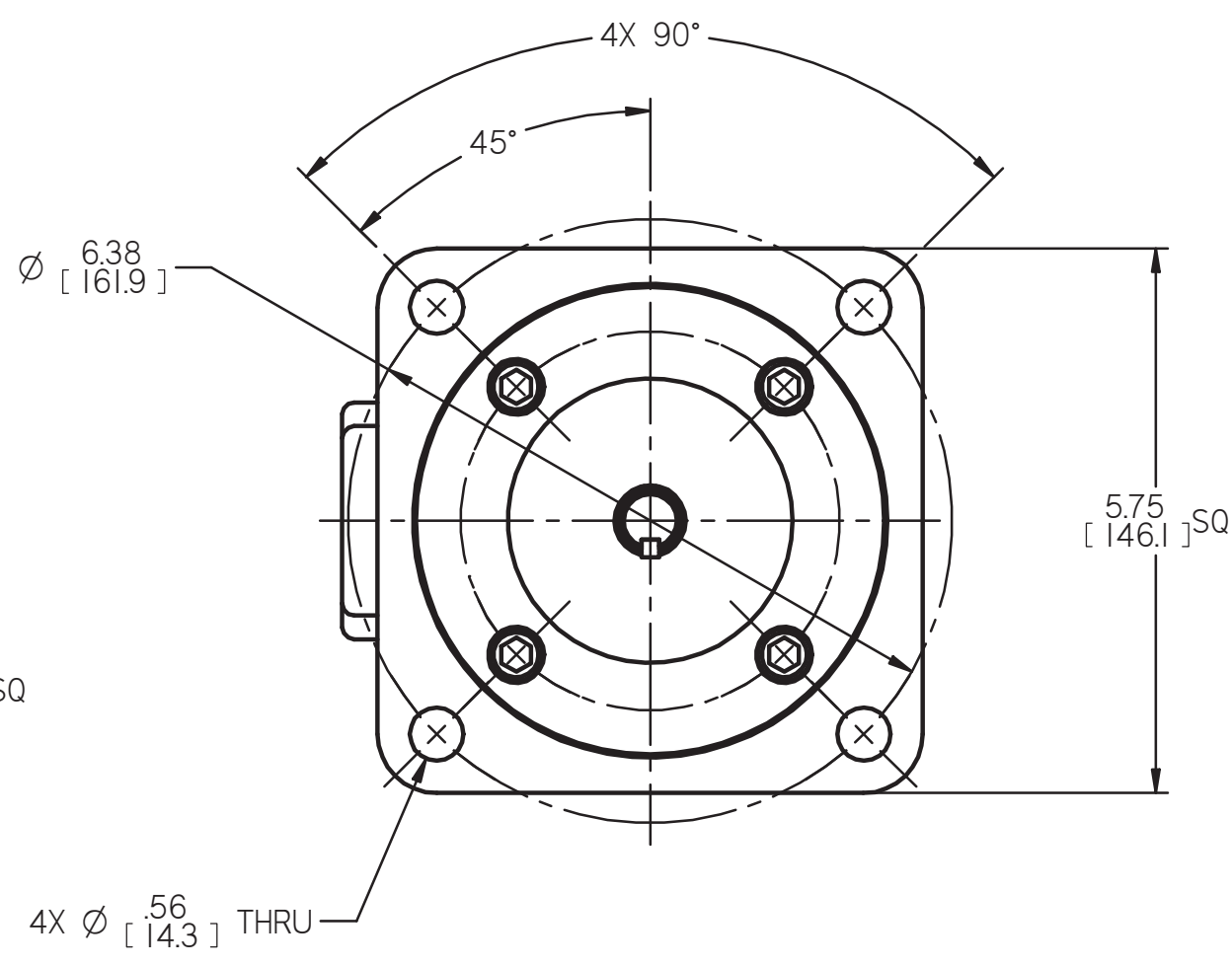
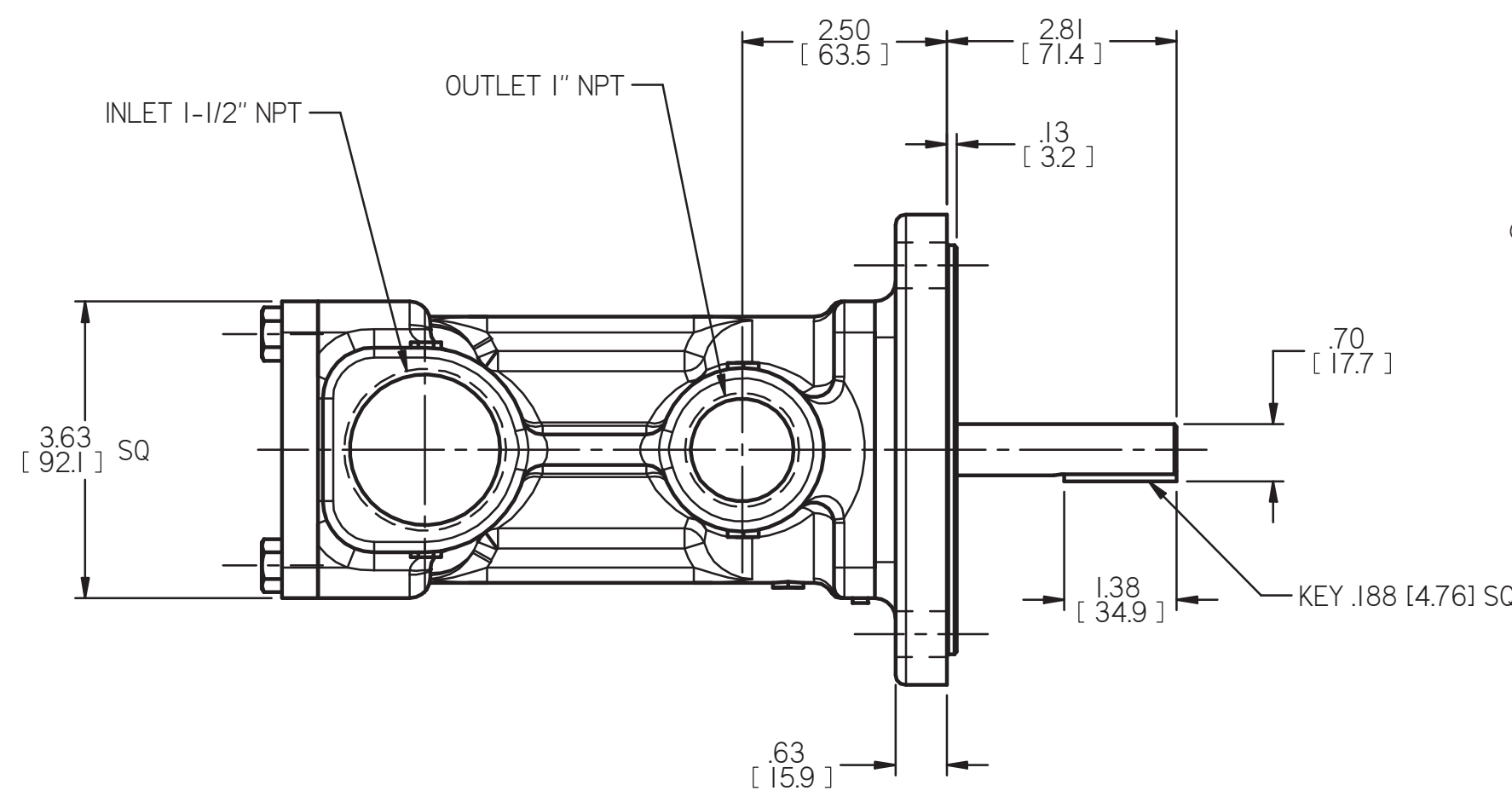


REVISION HISTORY						
CHG NO	ZONE	REV	DESCRIPTION	DATE	BY	APPROVED
I3-0319	ALL	01	REDRAWN AND UPDATED ON CAD	6-6-14	ERH	CHH

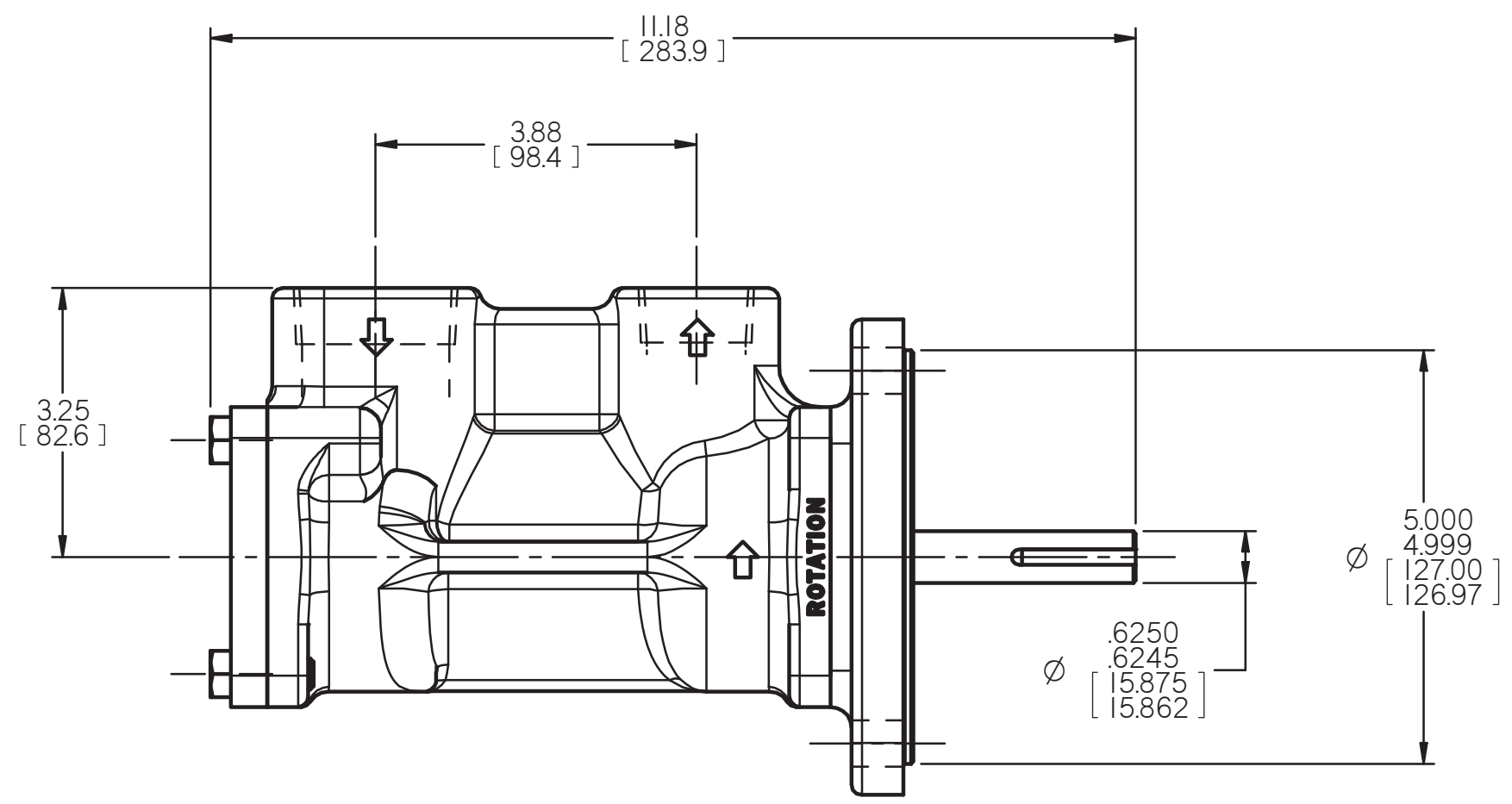


COORDINATE SYSTEM FOR MAXIMUM PUMP FORCES (F) AND MOMENTS (M)

INLET:
 FX= 28.1 LBF [125 N] MX= 46.9 LB FT [63.6 N.m]
 FY= 28.1 LBF [125 N] MY= 46.9 LB FT [63.6 N.m]
 FZ= 28.1 LBF [125 N] MZ= 46.9 LB FT [63.6 N.m]

OUTLET:
 FX= 18.8 LBF [83.4 N] MX= 31.3 LB FT [42.4 N.m]
 FY= 18.8 LBF [83.4 N] MY= 31.3 LB FT [42.4 N.m]
 FZ= 18.8 LBF [83.4 N] MZ= 31.3 LB FT [42.4 N.m]

FORCE AND MOMENT VALUES ARE RELATIVE TO CENTER OF INLET AND OUTLET PORT FACES.



DRAWING CERTIFICATION	
CUSTOMER NAME	-----
CUSTOMER PO NUMBER	---
CUSTOMER PART NUMBER	-
BOM NUMBER	-----
PUMP TYPE	-----
SHAFT ROTATION	-----
OTHER INFORMATION	
CERTIFIED BY	-----
CERTIFIED DATE	-----
IMO ORDER NUMBER	-----
DATA REVISION NUMBER	-

NOTES:
 1. UNLESS OTHERWISE SPECIFIED,
 ALL DIMENSIONS ARE IN INCHES.
 DIMENSIONS IN [] ARE MILLIMETERS.

MATERIAL	DRAWN	WLW	4-20-00	CIRCOR IMO [®]			
PROCESS	CHECKED	WLW	5-17-00				
UNLESS OTHERWISE SPECIFIED ASME Y14.5M-1994.		APPD	WLW		5-17-00		
COMMENTS: SUCTION STRAINER AND DISCHARGE RELIEF VALVE MUST BE PROVIDED. ALIGNMENT: UNITS ARE ACCURATELY ALIGNED AT THE FACTORY. ALIGNMENT SHOULD BE CHECKED BEFORE STARTING TO ENSURE THAT IT IS STILL WITHIN .005 (0.13) MM. PRESTARTING: FLUSH SUCTION PIPING BEFORE CONNECTING PUMP. PRIME AND VENT PUMP. READ INSTRUCTION MANUAL FOR DETAILS BEFORE STARTING.		METHODS		TITLE	OUTLINE STANDARD _3EIC-118_		
		THIRD ANGLE PROJECTION	FIRST ORDER	SIZE	CAGE CODE	DWG NO	
		USED ON	3241/220	C	59180	SDD19924	
				SCALE	1/2	WEIGHT 27 LBS [12 kg]	SHEET OF