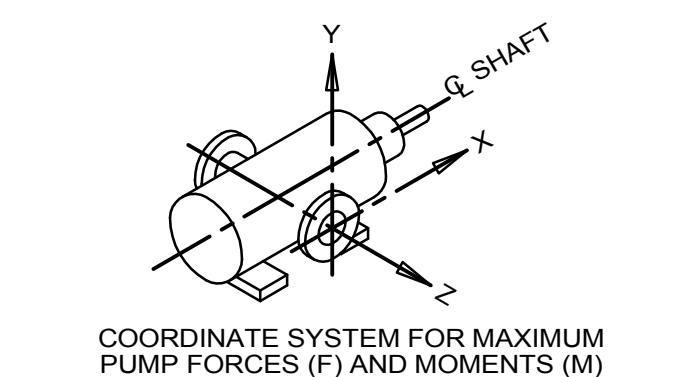
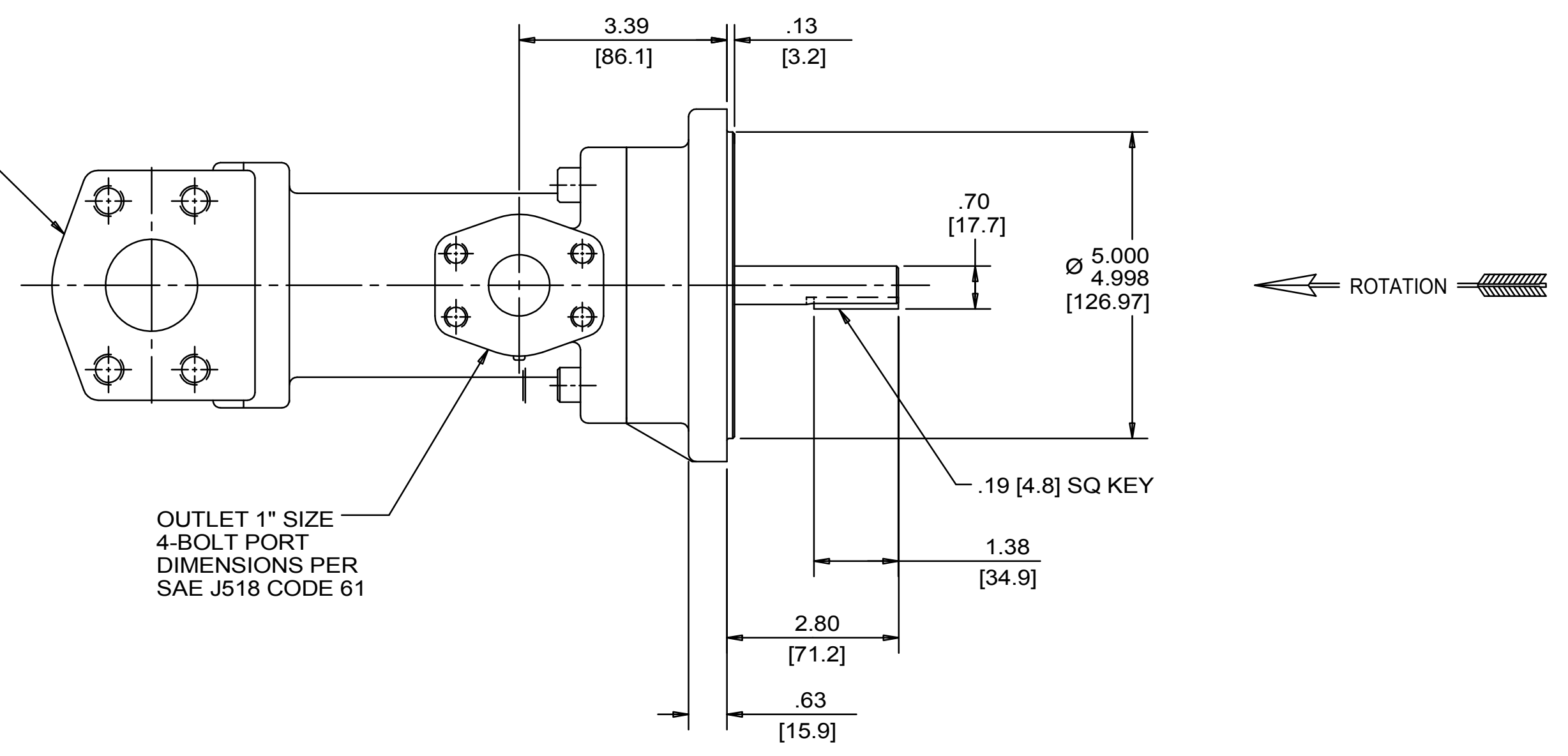
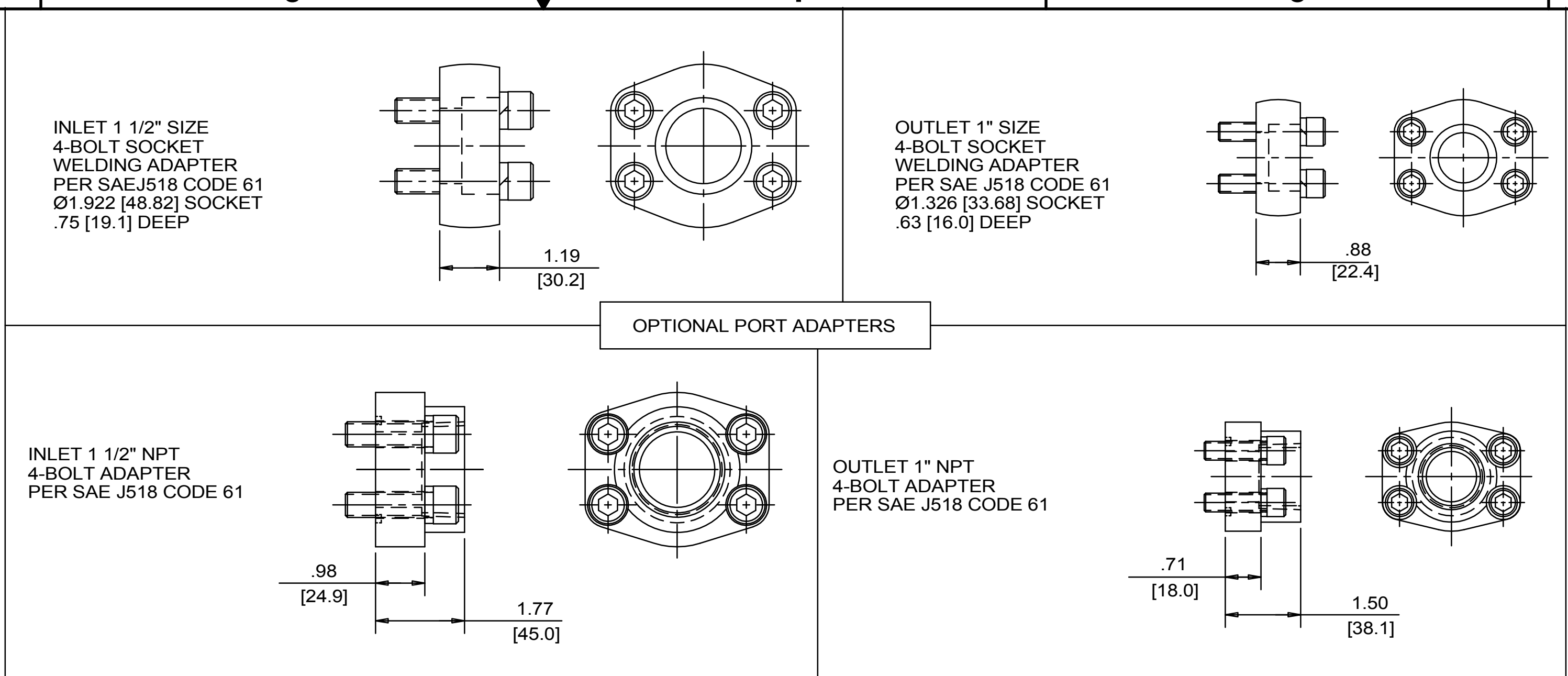


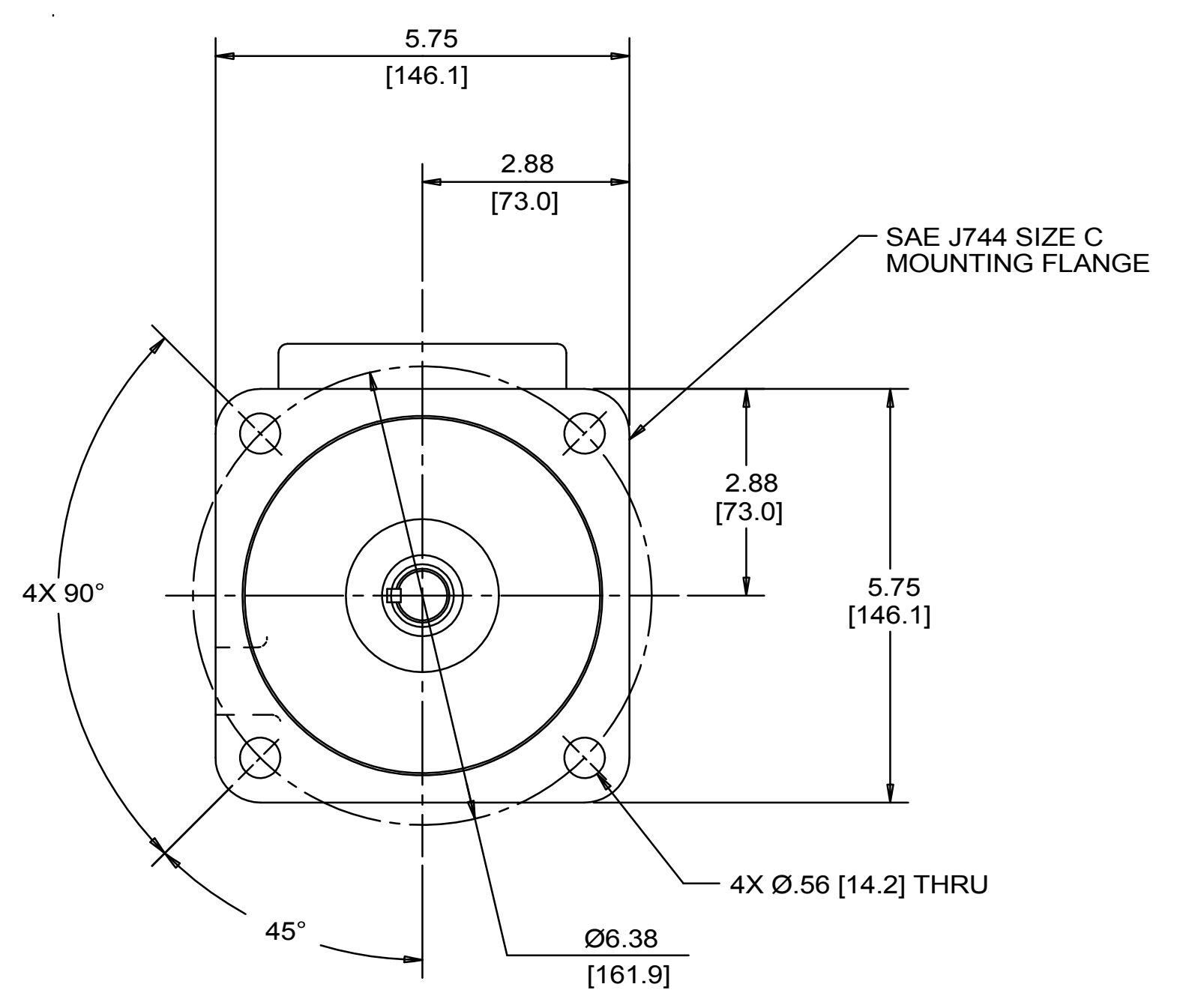
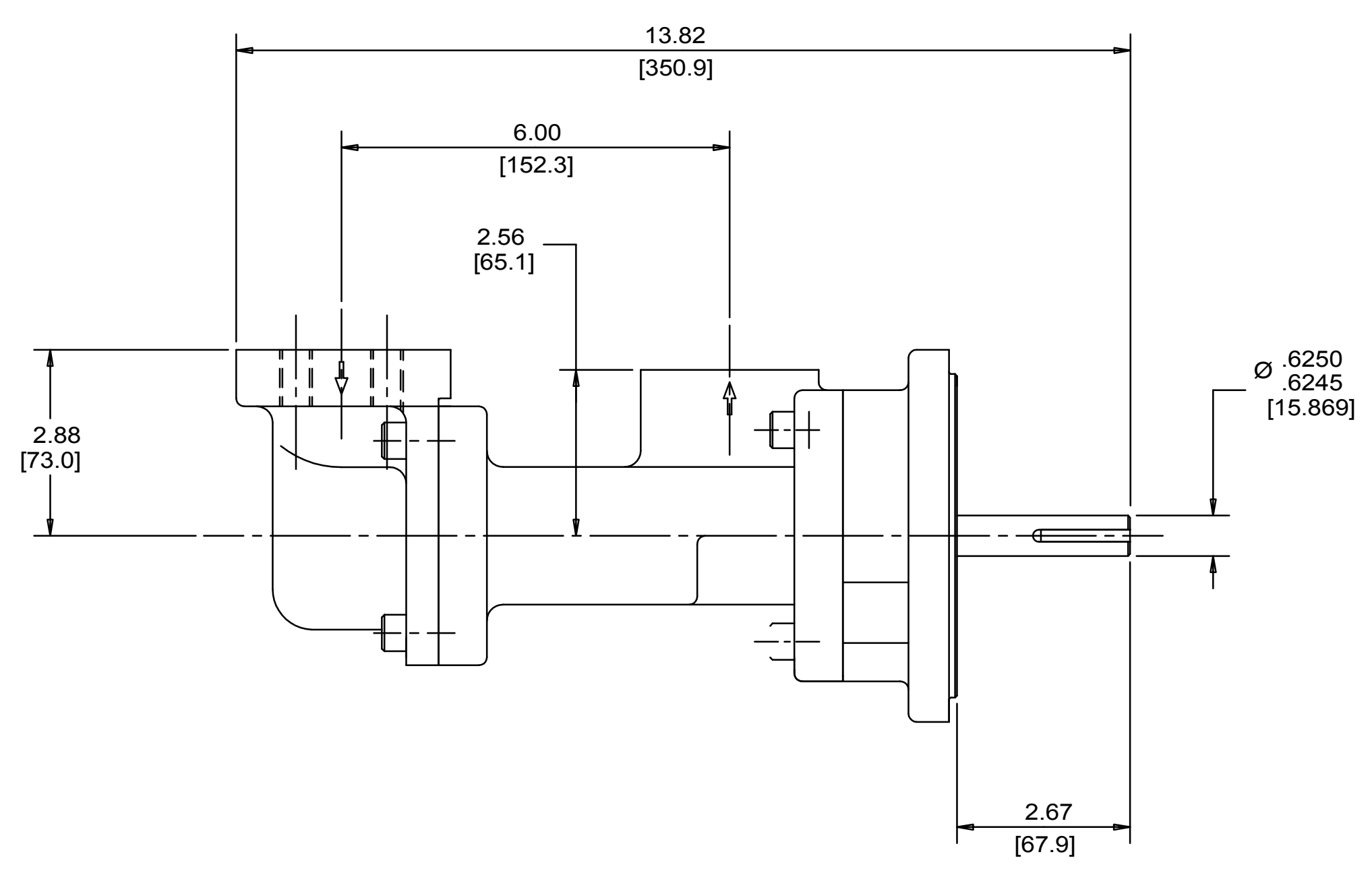
REVISION HISTORY						
CHG NO	ZONE	REV	DESCRIPTION	DATE	BY	APPROVED
11-0187	AI	5	CHANGED TITLE, WAS AA3G	5-17-11	ERH	ERH
12-0174	AI	6	CORRECTED PUMP DISCRIPTION	4-17-12	ERH	ERH
22-0000	ALL	7	UPDATED TITLE BLOCK, FORCES & MOMENTS STAMP	1-27-22	CDG	CDG



	LB F	N
INLET: Fx, Fy, Fz	113	500
OUTLET: Fx, Fy, Fz	75	334

	LB FT	Nm
INLET: Mx, My, Mz	188	254
OUTLET: Mx, My, Mz	125	169

FORCE AND MOMENT VALUES ARE RELATIVE TO CENTER OF INLET AND OUTLET PORT FACES.



**DRAWING CERTIFICATION**

12 O'CLOCK OUTLET PORT  
9 O'CLOCK  
3 O'CLOCK  
6 O'CLOCK  
\*\*\*SEE NOTES 1, 2 & 3\*\*\*

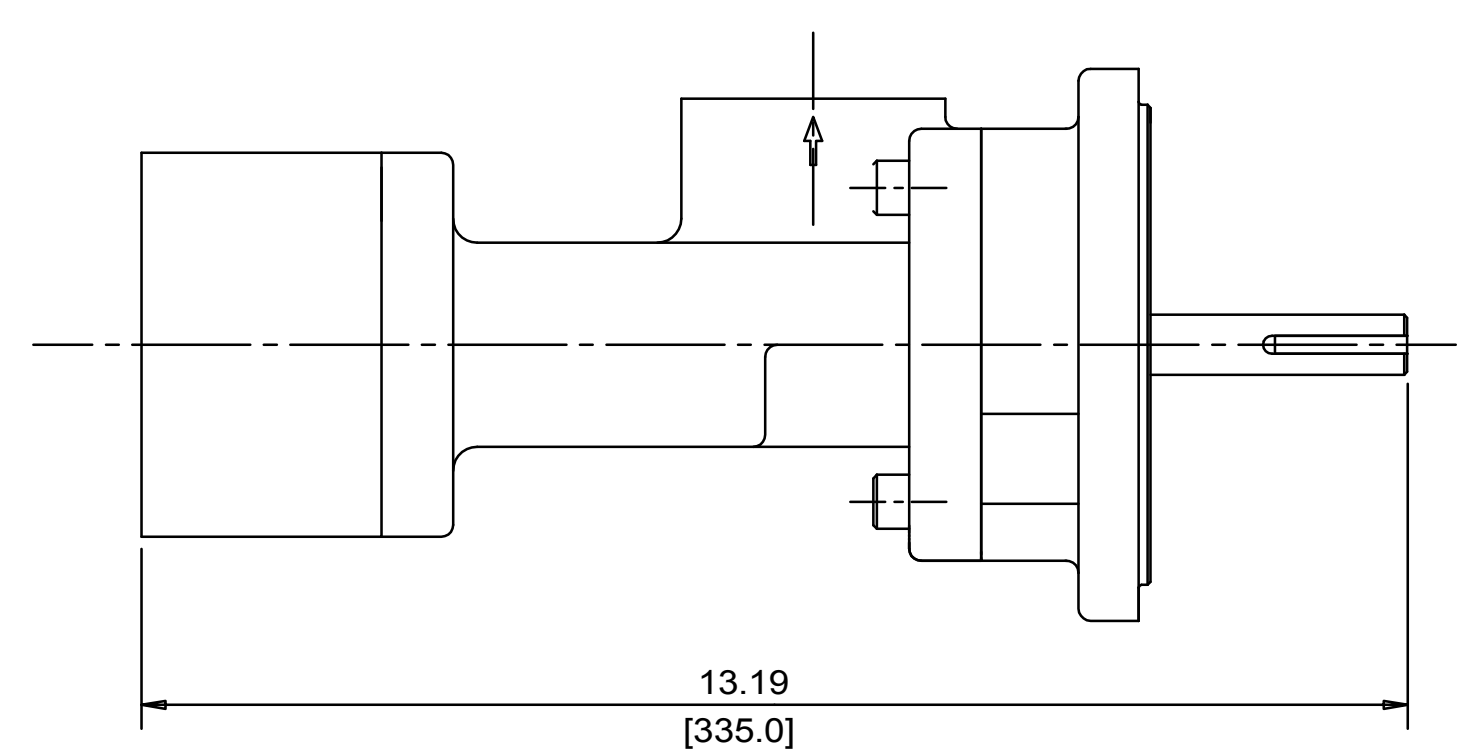
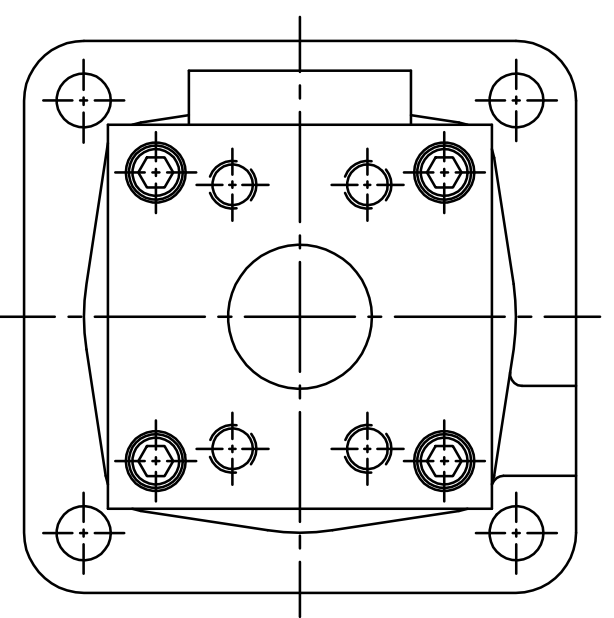
CUSTOMER NAME -----  
CUSTOMER PO NUMBER -----  
CUSTOMER PART NUMBER -----

BOM NUMBER -----  
PUMP TYPE -----  
SHAFT ROTATION -----  
INLET PORT ORIENTATION -----  
INLET PORT OPTION -----  
INLET ADAPTER OPTION -----  
OUTLET ADAPTER OPTION -----

OTHER INFORMATION -----

CERTIFIED BY -----  
CERTIFIED DATE -----  
IMO ORDER NUMBER -----  
DATA REVISION NUMBER -----

VIEWS FOR ALTERNATE AXIAL INLET PORT CONFIGURATION



- NOTES:**
- PORT ORIENTATIONS SUPPLIED AS SHOWN UNLESS OTHERWISE SPECIFIED.
  - ALTERNATE RADIAL INLET PORT ORIENTATIONS PROVIDED IF SPECIFIED ON ORDER. AVAILABLE ALTERNATE ORIENTATIONS ARE 3, 6, 9, AND 12 O'CLOCK RELATIVE TO OUTLET PORT.
  - BOLT PATTERN FOR SAE 4-BOLT AXIAL INLET IS ALWAYS ORIENTED AS SHOWN WITH RESPECT TO OUTLET PORT.
  - APPROXIMATE PUMP WEIGHT (WITHOUT ADAPTERS): 31.5 LBS. {14.3 kgs}
  - UNLESS OTHERWISE SPECIFIED, ALL DIMENSIONS ARE IN INCHES. DIMENSIONS IN [ ] ARE MILLIMETERS.

DRAWN	NRS	6-15-99		
CHECKED	NRS	7-20-99		
APPROVED	NRS	7-26-99	<b>TITLE</b> OUTLINE STANDARD (STEEL) __3G/NN5-IA118__	
PROCESS	METHODS		<b>FIRST ORDER</b> E1102A <b>SCALE</b> 1/2 <b>WEIGHT</b> SEE NOTE 4 <b>SHEET</b> 1 OF 1	<b>DATE</b> 6-15-99 <b>SIZE</b> F <b>CAGE CODE</b> 59180 <b>DWG NO</b> SDD19714

UNLESS OTHERWISE SPECIFIED  
ASME Y14.5M-1994

COMMENTS:  
 SUCTION STRAINER AND DISCHARGE RELIEF VALVE MUST BE PROVIDED  
 ALIGNMENT  
 UNITS ARE ACCURATELY ADDED AT THE FACTORY. ALIGNMENT SHOULD BE CHECKED BEFORE STARTING TO INSURE THAT IT IS STILL WITHIN TOL.  
 ID (3) FM  
 RECHECKING  
 FLUSH SUCTION PUMP BEFORE CONNECTING PUMP. PRIME AND VENT PUMP. READ INSTRUCTION MANUAL FOR DETAILS BEFORE STARTING.