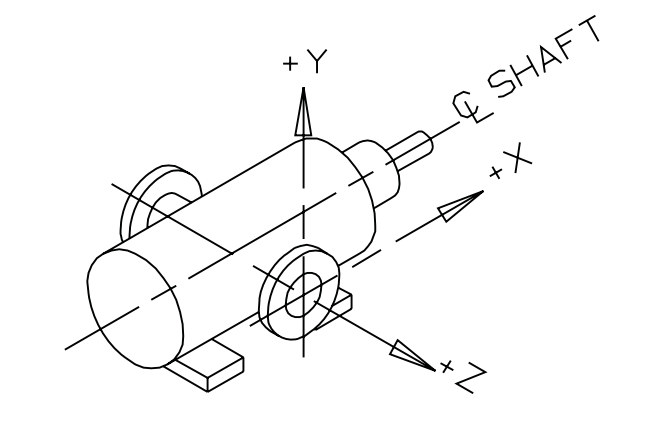
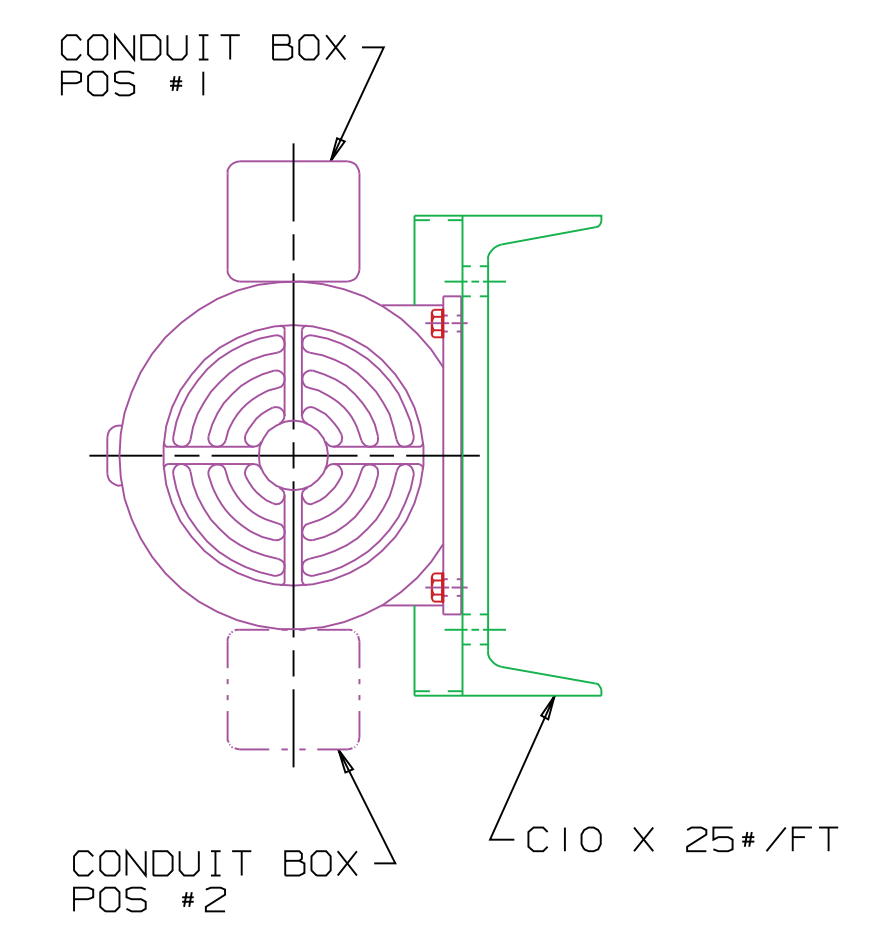
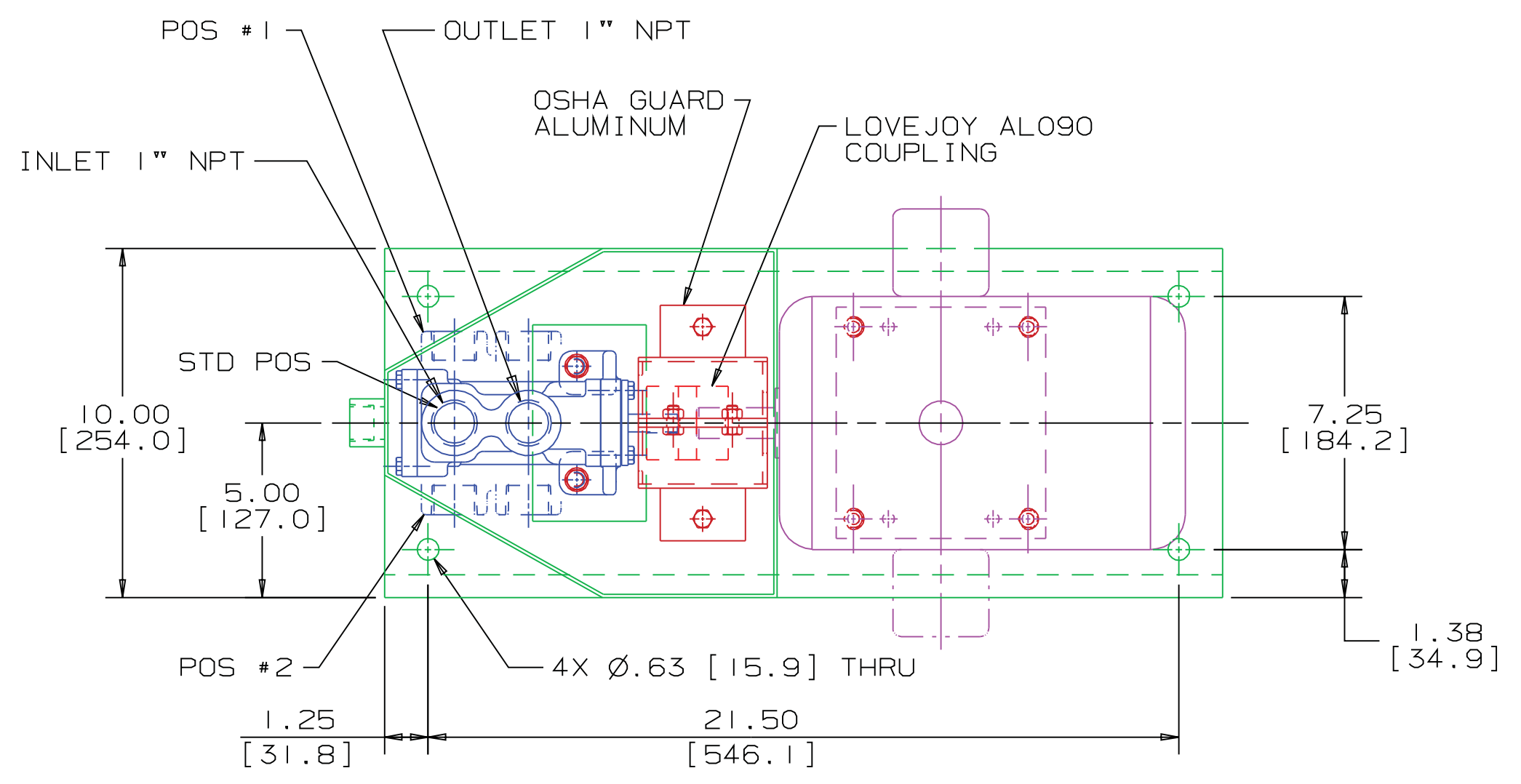


REVISION HISTORY						
CHG NO	ZONE	REV	DESCRIPTION	DATE	BY	APPROVED
06-0141	ALL	1	REVISED AND REDRAWN WITH NEW DESIGN BEDPLATE AND GUARD	3-30-06	DMM	JOJ

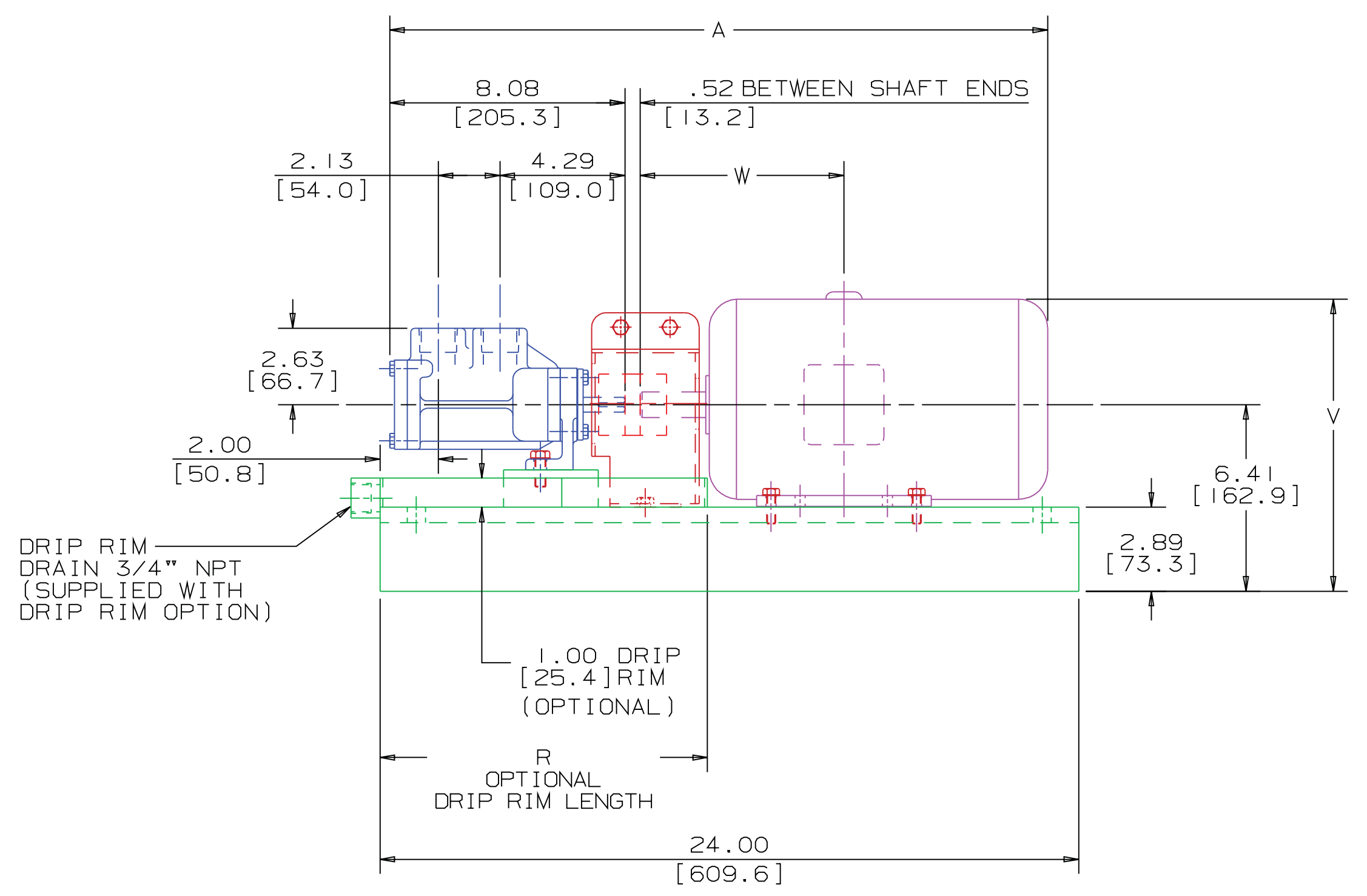


COORDINATE SYSTEM FOR MAXIMUM PUMP FORCES (F) AND MOMENTS (M)

INLET:  
 FX=18.8 LBF [83.4 N]    MX=31.3 LB FT [42.4 N·m]  
 FY=18.8 LBF [83.4 N]    MY=31.3 LB FT [42.4 N·m]  
 FZ=18.8 LBF [83.4 N]    MZ=31.3 LB FT [42.4 N·m]

OUTLET:  
 FX=18.8 LBF [83.4 N]    MX=31.3 LB FT [42.4 N·m]  
 FY=18.8 LBF [83.4 N]    MY=31.3 LB FT [42.4 N·m]  
 FZ=18.8 LBF [83.4 N]    MZ=31.3 LB FT [42.4 N·m]

FORCE AND MOMENT VALUES ARE RELATIVE TO CENTER OF INLET AND OUTLET PORT FACES.



DRAWING CERTIFICATION	
CUSTOMER NAME	-----
CUSTOMER PO NUMBER	-----
CUSTOMER PART NUMBER	-----
UNIT BILL OF MAT'L NO.	-----
PUMP TYPE	-----
ITEM NUMBER	-----
DRIP RIM	-----
COUPLING TYPE	----- LOVEJOY
SHAFT ROTATION	-----
PORT POSITION	-----
MOTOR MANUFACTURER	-----
MOTOR TYPE	-----
FRAME SIZE	-----
POWER	-----
ROTATING SPEED	-----
PHASE(S)	-----
FREQUENCY	-----
VOLTAGE	-----
MOTOR WEIGHT	-----
CONDUIT BOX POSITION	-----
MOTOR INSTALLED BY	-----
CERTIFIED BY	-----
CERTIFICATION DATE	-----
IMO ORDER NUMBER	-----
CERTIFICATION REV. NO.	-----
OTHER INFORMATION	

NOTE: UNLESS OTHERWISE SPECIFIED, ALL DIMENSIONS ARE IN INCHES. DIMENSIONS IN [ ] ARE MILLIMETERS.

ITEM NO.	NEMA MOTOR FRAME	UNITS	DIMENSION				APPROXIMATE UNIT WEIGHT			
			A	R	V	W	WITH DRIP RIM	WITHOUT DRIP RIM	WITH DRIP RIM	WITHOUT DRIP RIM
002	143/145T	INCHES [mm]	22.60 [574.1]	11.25 [285.8]	10.04 [254.9]	7.00 [177.8]	126 [57]	124 [56]		
001	56	INCHES [mm]	22.91 [582.0]	10.88 [276.2]	9.97 [253.4]	6.13 [155.6]	101 [46]	99 [45]		

NOTES:

- THIS IS A STANDARD PRE-ENGINEERED UNIT OUTLINE. ANY CHANGES OUTSIDE THE CERTIFICATION BLOCK WILL REQUIRE A NEW DRAWING ASSIGNMENT.
- ALTERNATE PORT POSITIONS ARE PROVIDED IF SPECIFIED ON ORDER. AVAILABLE POSITIONS ARE STD, #1 AND #2.
- DRIVER DIMENSIONS MAY VARY WITH TYPE AND MAKE OF DRIVER.
- STANDARD SHAFT ROTATION IS CLOCKWISE WHEN FACING COUPLING END OF PUMP.
- REVIEW GENERAL INSTRUCTION MANUAL FOR ALIGNMENT, PIPING, INLET STRAINER, DISCHARGE RELIEF VALVE, SEAL VENT, ETC., CONSIDERATIONS BEFORE INSTALLING AND OPERATING UNIT.

DRAWN	DMM	5-2-01		
CHECKED	MV	5-4-01		
APPROVED	MV	5-4-01		
COMMENTS: SUCTION STRAINER AND DISCHARGE RELIEF VALVE MUST BE PROVIDED. UNITS ARE ACCURATELY ALIGNED AT THE FACTORY. ALIGNMENT SHOULD BE CHECKED BEFORE STARTING TO INSURE THAT IT IS STILL WITHIN .005 (0.13) FIM. PRESTARTING: FLUSH SUCTION PIPING BEFORE CONNECTING PUMP. PRIME AND VENT PUMP. READ INSTRUCTION MANUAL FOR DETAILS BEFORE STARTING.			TITLE <b>STANDARD UNIT OUTLINE DRAWING</b> <b>IRON &amp; STEEL CASE FOOT MOUNT 3E87/95</b>	
THIRD ANGLE PROJECTION	FIRST ORDER	SIZE	CAGE CODE	DWG NO.
USED ON	EB122A	D	59180	SDD20066
SCALE			WEIGHT SEE TABLE	SHEET 1 OF 1